

Catalog #: 51254

Aliases

DER12; ENT2; HNP36; Equilibrative nucleoside transporter 2; 36 kDa nucleolar protein HNP36; Delayed-early response protein 12; Equilibrative nitrobenzylmercaptopurine riboside-insensitive nucleoside transporter; Equilibrative NBMPR-insensitive nucleoside transporter; Hydrophobic nucleolar protein 36 kDa; Nucleoside transporter ei-type; Solute carrier family 29 member 2

Background

Gene Name: SLC29A2

NCBI Gene Entry: [3177](#)

UniProt Entry: [Q14542](#)

Application Information

Molecular Weight: Predicted, 50 kDa; observed, 36 kDa

Clonality: Rabbit polyclonal antibody

Species Reactivity: Human, mouse, rat, bovine

Applications Tested: Western blotting (WB), immunocytochemistry (IC)

Immunogen

A synthesized peptide derived from human ENT2

Isotype

Rabbit IgG

Storage Buffer

Supplied in PBS (pH 7.3) containing 30% glycerol, and 0.01% sodium azide.

Storage

Store at -20 °C for one year.

Recommended Dilutions

Western Blotting (WB): 1:500-1:1,000

Immunocytochemistry (IC): 1:50-1:200

Note: This product is for research use only.

Validation Data

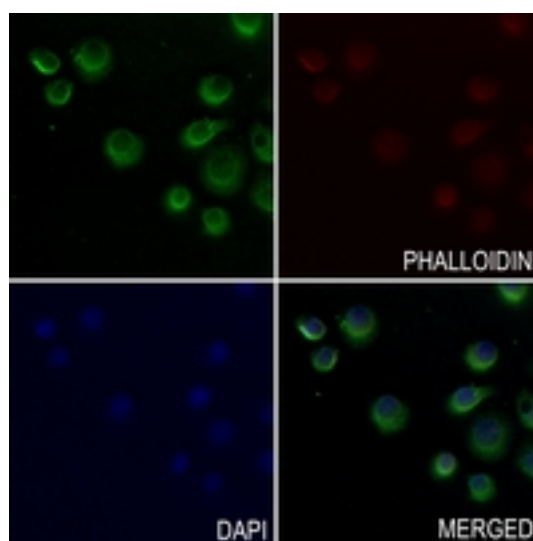
SUPPORT

SUPPORT@GENUINBIOTECH.COM
TEL: +1-540-855-7041

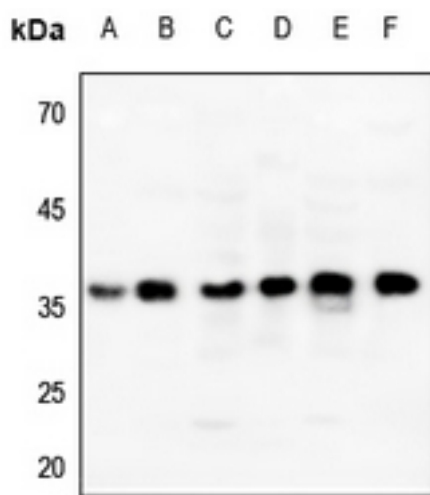
ORDERS

SALES@GENUINBIOTECH.COM
FAX: +1-540-855-7041

WWW.GENUINBIOTECH.COM



Immunocytochemical analysis of ENT2 staining in SGC7901 cells. Formalin-fixed cells were permeabilized with 0.1% Triton X-100 in TBS for 5-10 minutes and blocked with 3% BSA-PBS for 30 minutes at room temperature. Cells were probed with the primary antibody in 3% BSA-PBS and incubated overnight at 4 °C in a humidified chamber. Cells were washed with PBST and incubated with a AF488-conjugated secondary antibody (green) in PBS at room temperature in the dark. Phalloidin - AF594 was used to stain Actin filaments (red). DAPI was used to stain the cell nuclei (blue).



Western blotting analysis of ENT2 expression in Hela (A), mouse muscle (B), mouse lung (C), mouse brain (D), rat liver (E), rat heart (F) whole cell lysates.