

## Catalog #: 5126

## Aliases

RNF146; Ring Finger Protein 146; Dactylidin; RING-Type E3 Ubiquitin Transferase RNF146; E3 Ubiquitin-Protein Ligase RNF146; DKFZp434O1427; DJ351K20.1; Iduna; RING Finger Protein 146; EC 2.3.2.27

## Background

Gene Name: RNF146

NCBI Gene Entry: [81847](#)

UniProt Entry: [Q9NTX7](#)

## Application Information

Molecular Weight: Predicted, 39 kDa; observed, 49 kDa

Clonality: Mouse monoclonal antibody

Clone ID: 24GB15845

Species Reactivity: Human, mouse, rat

Applications Tested: Western blotting (WB), flow cytometry (FCM), immunocytochemistry (IC)

## Immunogen

Recombinant protein of human RNF146

## Isotype

Mouse IgG2a

## Storage Buffer

Supplied in PBS (pH 7.4) containing 50% glycerol, and 0.02% sodium azide.

## Storage

Store at -20 °C for one year.

## Recommended Dilutions

Western Blotting (WB): 1:400-1:2,000

Flow Cytometry (FCM): 1:2,000

Immunocytochemistry (IC): 1:100-1:1,000

**Note:** This product is for research use only.

---

### SUPPORT

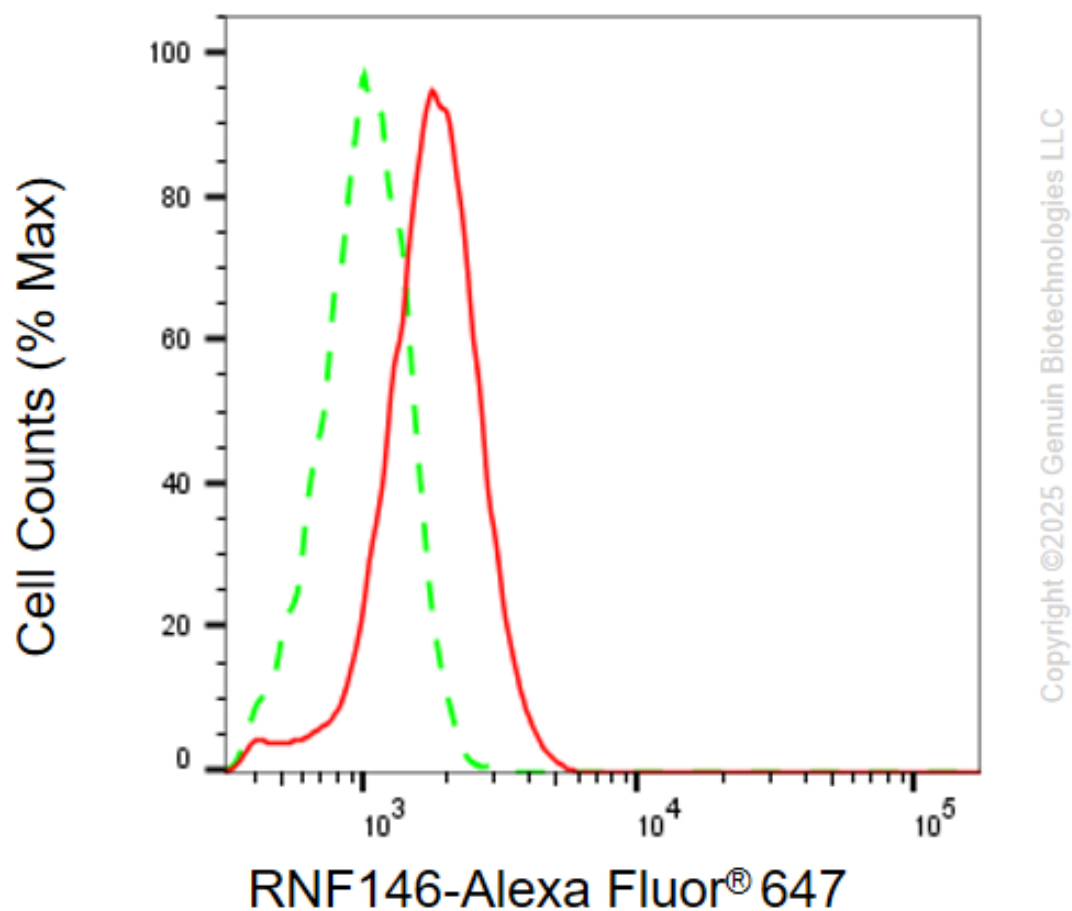
SUPPORT@GENUINBIOTECH.COM  
TEL: +1-540-855-7041

### ORDERS

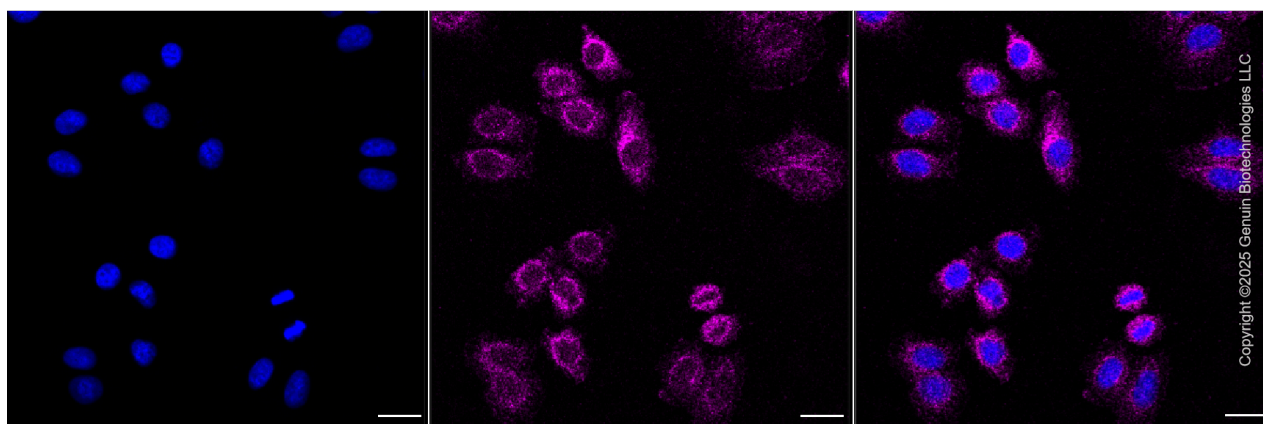
SALES@GENUINBIOTECH.COM  
FAX: +1-540-855-7041

[WWW.GENUINBIOTECH.COM](http://WWW.GENUINBIOTECH.COM)

## Validation Data



Flow cytometric analysis of RNF146 expression in HepG2 cells using anti-RNF146 antibody (Cat#5126, 1:2,000) . Green, isotype control; red, RNF146.



Immunocytochemical staining of HepG2 cells with anti-RNF146 antibody (Cat#5126, 1:1,000) . Nuclei were stained blue with DAPI; RNF146 was stained magenta with Alexa Fluor® 647.

## SUPPORT

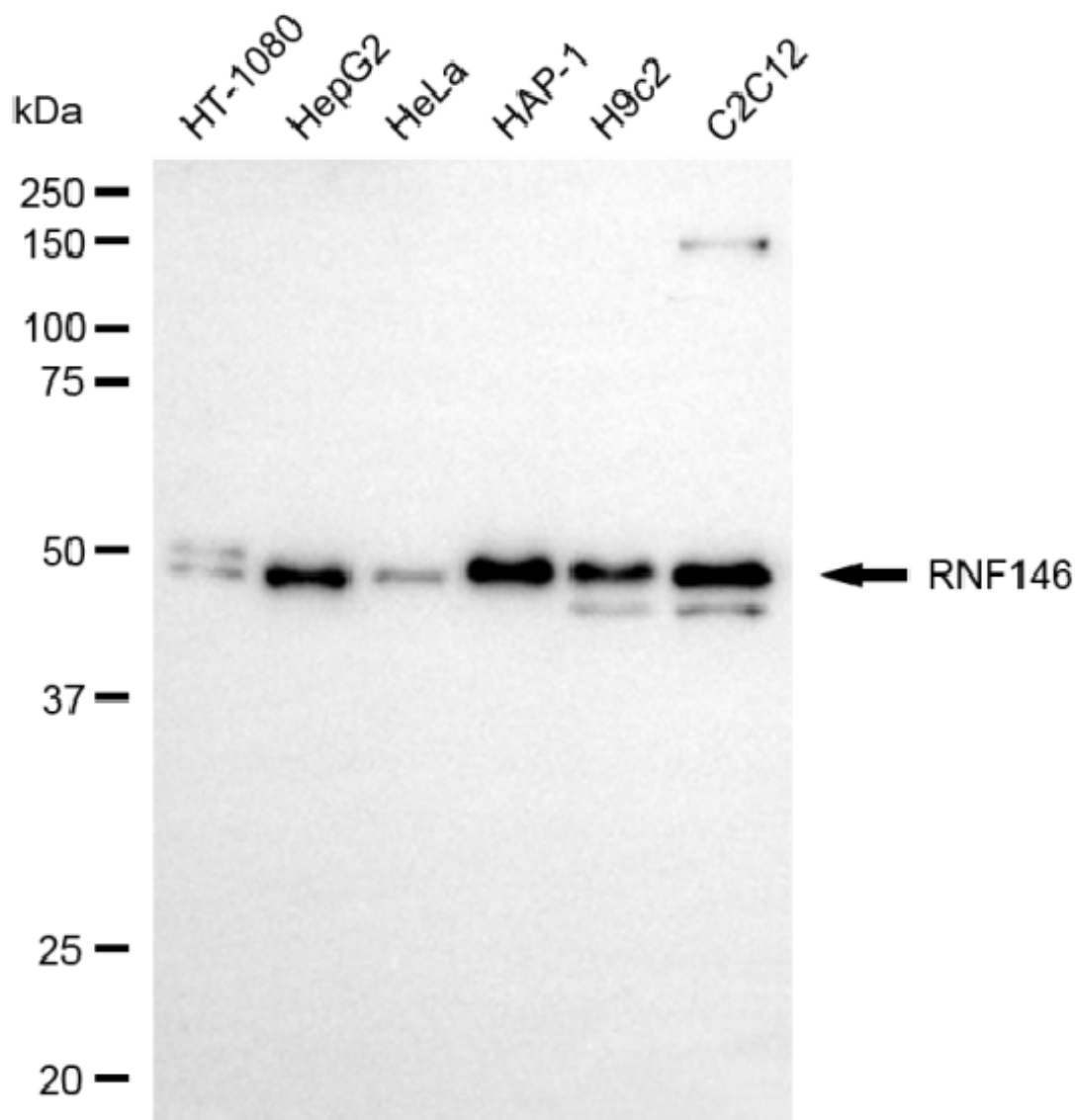
SUPPORT@GENUINBIOTECH.COM  
TEL: +1-540-855-7041

## ORDERS

SALES@GENUINBIOTECH.COM  
FAX: +1-540-855-7041

[WWW.GENUINBIOTECH.COM](http://WWW.GENUINBIOTECH.COM)

Images were taken using Leica stellaris 5. Protein abundance based on laser Intensity and smart gain: Low. Scale bar, 20  $\mu$ m.



Copyright ©2025 Genuin Biotechnologies LLC

Western blotting analysis using anti-RNF146 antibody (Cat#5126). Total cell lysates (30  $\mu$ g) from various cell lines were loaded and separated by SDS-PAGE. The blot was incubated with anti-RNF146 antibody (Cat#5126, 1:2,000) and HRP-conjugated goat anti-mouse secondary antibody (Cat#101, 1:20,000) respectively. Image was developed using NaQ™ ECL Substrate Kit (Cat#716).

## SUPPORT

SUPPORT@GENUINBIOTECH.COM  
TEL: +1-540-855-7041

## ORDERS

SALES@GENUINBIOTECH.COM  
FAX: +1-540-855-7041

WWW.GENUINBIOTECH.COM