

## Catalog #: 51284

### Aliases

KIAA0786; LEC1; LPHH1; Latrophilin-2; Calcium-independent alpha-latrotoxin receptor 2; CIRL-2; Latrophilin homolog 1; Lectomedin-1

### Background

Gene Name: LPHN2

NCBI Gene Entry: [23266](#)

UniProt Entry: [O95490](#)

### Application Information

Molecular Weight: Predicted, 163 kDa; observed, 210 kDa

Clonality: Rabbit polyclonal antibody

Species Reactivity: Human, mouse, rat, bovine

Applications Tested: Western blotting (WB), immunohistochemistry (IHC), immunocytochemistry (IC)

### Immunogen

A synthesized peptide derived from human LPHN2

### Isotype

Rabbit IgG

### Storage Buffer

Supplied in PBS (pH 7.3) containing 30% glycerol, and 0.01% sodium azide.

### Storage

Store at -20 °C for one year.

### Recommended Dilutions

Western Blotting (WB): 1:500-1:1,000

Immunohistochemistry (IHC): 1:50-1:100

Immunocytochemistry (IC): 1:50-1:200

**Note:** This product is for research use only.

### Validation Data

---

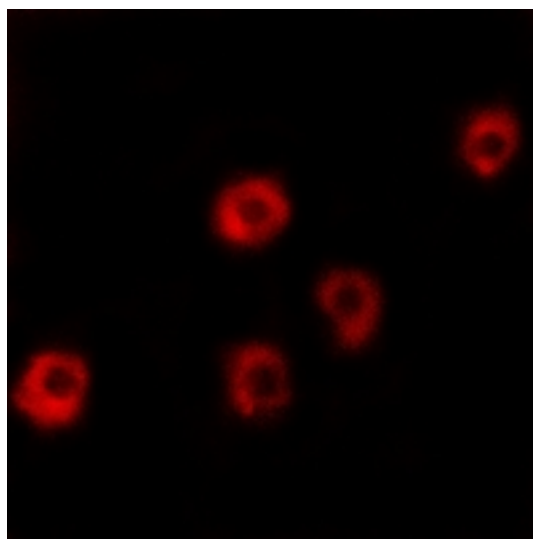
#### SUPPORT

SUPPORT@GENUINBIOTECH.COM  
TEL: +1-540-855-7041

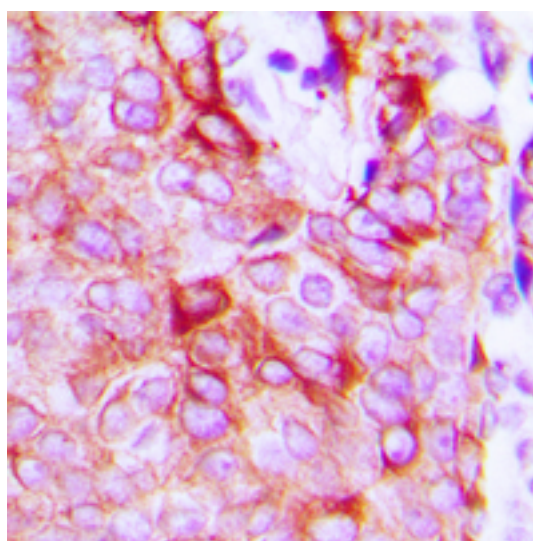
#### ORDERS

SALES@GENUINBIOTECH.COM  
FAX: +1-540-855-7041

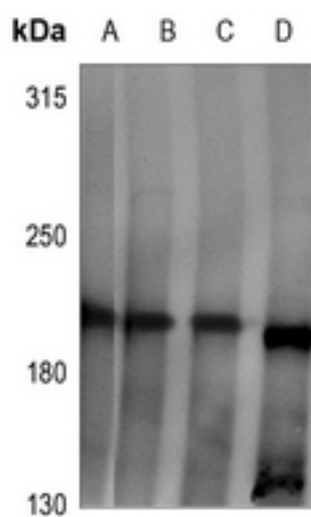
[WWW.GENUINBIOTECH.COM](http://WWW.GENUINBIOTECH.COM)



Immunocytochemical analysis of LPHN2 staining in COS7 cells. Formalin-fixed cells were permeabilized with 0.1% Triton X-100 in TBS for 5-10 minutes and blocked with 3% BSA-PBS for 30 minutes at room temperature. Cells were probed with the primary antibody in 3% BSA-PBS and incubated overnight at 4 °C in a humidified chamber. Cells were washed with PBST and incubated with a AF594-conjugated secondary antibody (red) in PBS at room temperature in the dark.



Immunohistochemical analysis of LPHN2 staining in human breast cancer formalin fixed paraffin embedded tissue section. The section was pre-treated using heat mediated antigen retrieval with sodium citrate buffer (pH 6.0). The section was then incubated with the antibody at room temperature and detected using an HRP conjugated compact polymer system. DAB was used as the chromogen. The section was then counterstained with haematoxylin and mounted with DPX.



Western blotting analysis of LPHN2 expression in SGC7901 (A), U87MG (B), A549 (C), HepG2 (D) whole cell lysates.