

## Catalog #: 5130

### Aliases

SHMT1; Serine Hydroxymethyltransferase 1; SHMT; CSHMT; Cytoplasmic Serine Hydroxymethyltransferase; Serine Hydroxymethyltransferase 1 (Soluble); Serine Hydroxymethyltransferase, Cytosolic; Glycine Hydroxymethyltransferase; Serine Methylase; EC 2.1.2.1; MGC15229; MGC24556; 14 KDa Protein

### Background

Gene Name: SHMT1

NCBI Gene Entry: [6470](#)

UniProt Entry: [P34896](#)

### Application Information

Molecular Weight: Predicted, 53 kDa; observed, 48 kDa

Clonality: Mouse monoclonal antibody

Clone ID: 24GB15865

Species Reactivity: Human, mouse, rat

Applications Tested: Western blotting (WB), flow cytometry (FCM)

### Immunogen

Recombinant protein of human SHMT1

### Isotype

Mouse IgG2a

### Storage Buffer

Supplied in PBS (pH 7.4) containing 50% glycerol, and 0.02% sodium azide.

### Storage

Store at -20 °C for one year.

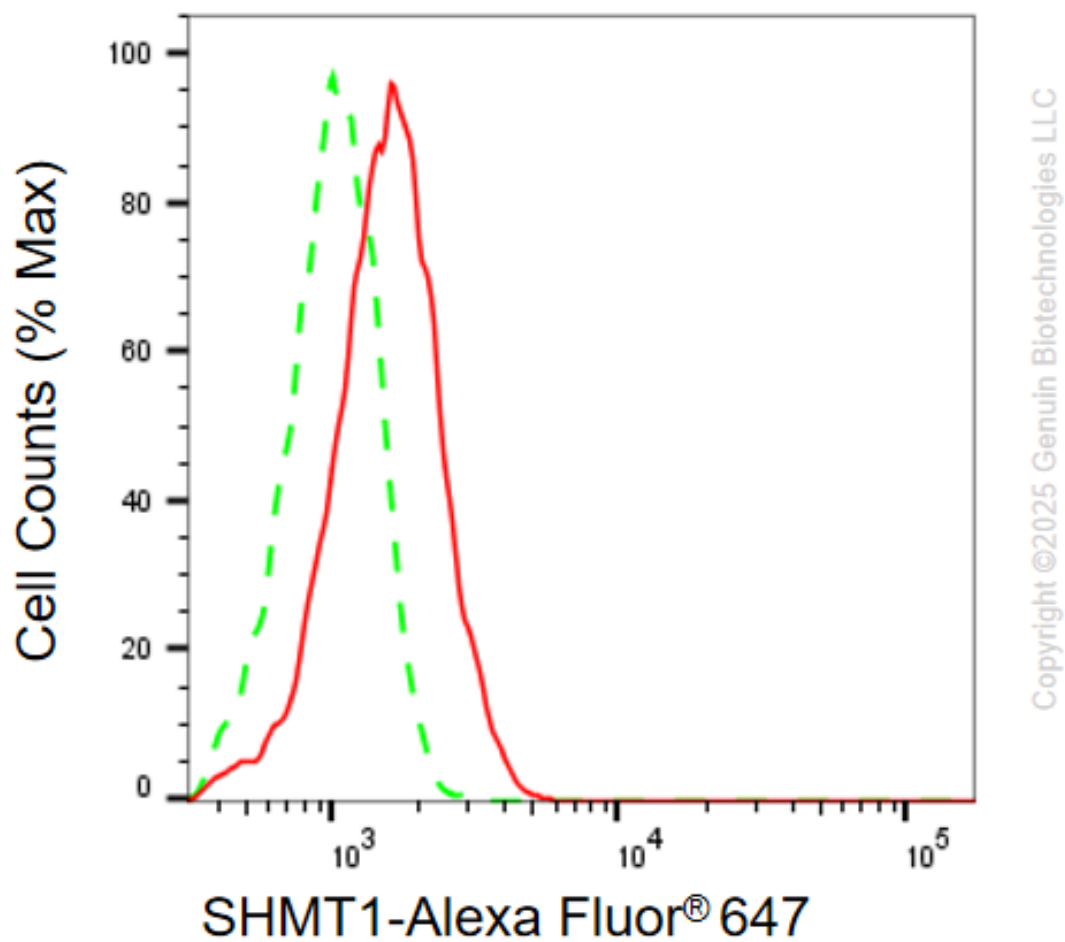
### Recommended Dilutions

Western Blotting (WB): 1:200-1:1,000

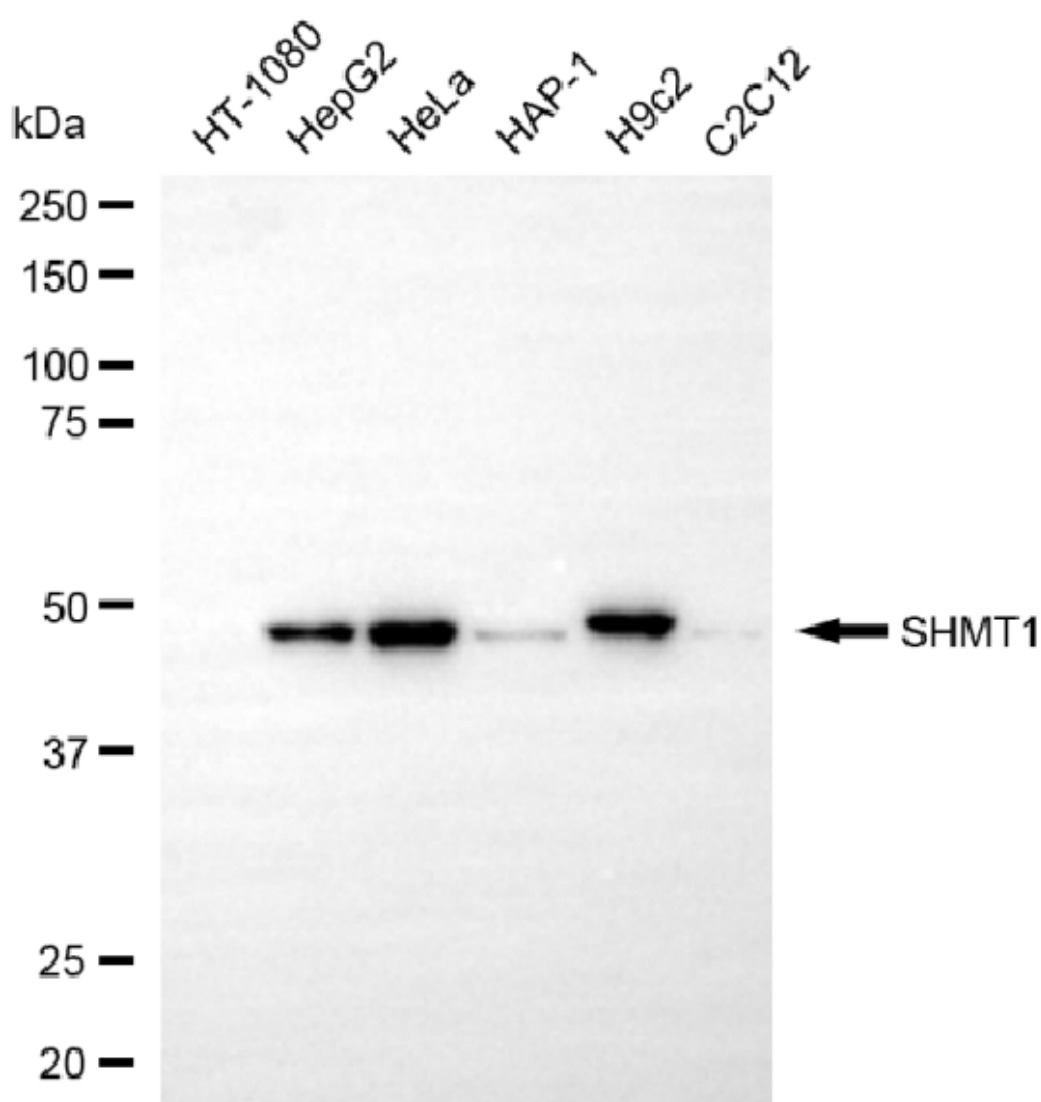
Flow Cytometry (FCM): 1:2,000

**Note:** This product is for research use only.

## Validation Data



Flow cytometric analysis of SHMT1 expression in HepG2 cells using anti-SHMT1 antibody (Cat#5130, 1:2,000) . Green, isotype control; red, SHMT1.



Copyright ©2025 Genuin Biotechnologies LLC

Western blotting analysis using anti-SHMT1 antibody (Cat#5130). Total cell lysates (30  $\mu$ g) from various cell lines were loaded and separated by SDS-PAGE. The blot was incubated with anti-SHMT1 antibody (Cat#5130, 1:1,000) and HRP-conjugated goat anti-mouse secondary antibody (Cat#101, 1:20,000) respectively. Image was developed using NaQ<sup>TM</sup> ECL Substrate Kit (Cat#716).

**SUPPORT**

SUPPORT@GENUINBIOTECH.COM  
TEL: +1-540-855-7041

**ORDERS**

SALES@GENUINBIOTECH.COM  
FAX: +1-540-855-7041

**WWW.GENUINBIOTECH.COM**