

Catalog #: 5132

Aliases

MRPL58; Mitochondrial Ribosomal Protein L58; DS-1; ML62; ICT1; Immature Colon Carcinoma Transcript 1 Protein; Peptidyl-TRNA Hydrolase ICT1, Mitochondrial; 39S Ribosomal Protein L58, Mitochondrial; Large Ribosomal Subunit Protein ML62; Digestion Substraction 1; MRP-L58; DS1; Mitochondrial Large Ribosomal Subunit Protein ICT1; Mitochondrial Large Ribosomal Subunit Protein ML62; Immature Colon Carcinoma Transcript 1; EC 3.1.1.29

Background

Gene Name: MRPL58

NCBI Gene Entry: [3396](#)

UniProt Entry: [Q14197](#)

Application Information

Molecular Weight: Predicted, 24 kDa; observed, 21 kDa

Clonality: Mouse monoclonal antibody

Clone ID: 24GB15875

Species Reactivity: Human, mouse

Applications Tested: Western blotting (WB), flow cytometry (FCM), immunocytochemistry (IC)

Immunogen

Recombinant protein of human MRPL58

Isotype

Mouse IgG1

Storage Buffer

Supplied in PBS (pH 7.4) containing 50% glycerol, and 0.02% sodium azide.

Storage

Store at -20 °C for one year.

Recommended Dilutions

Western Blotting (WB): 1:200-1:1,000

Flow Cytometry (FCM): 1:2,000

Immunocytochemistry (IC): 1:100-1:1,000

SUPPORT

SUPPORT@GENUINBIOTECH.COM
TEL: +1-540-855-7041

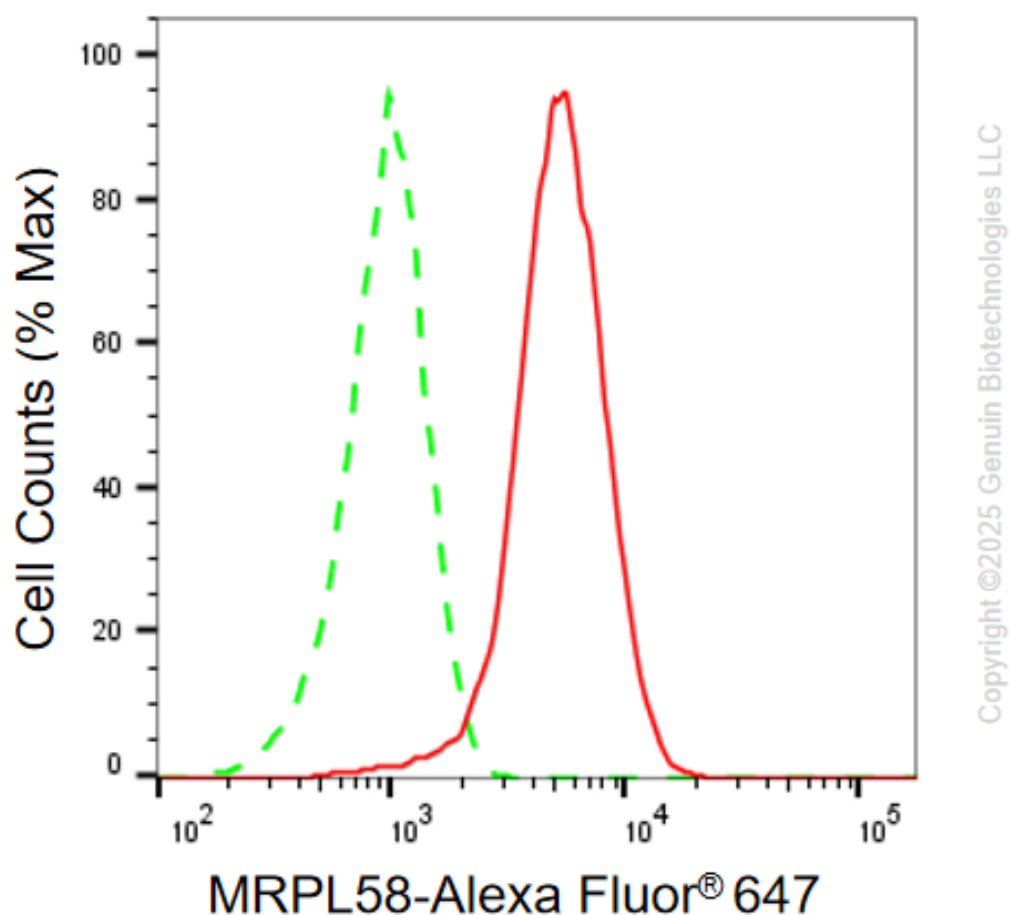
ORDERS

SALES@GENUINBIOTECH.COM
FAX: +1-540-855-7041

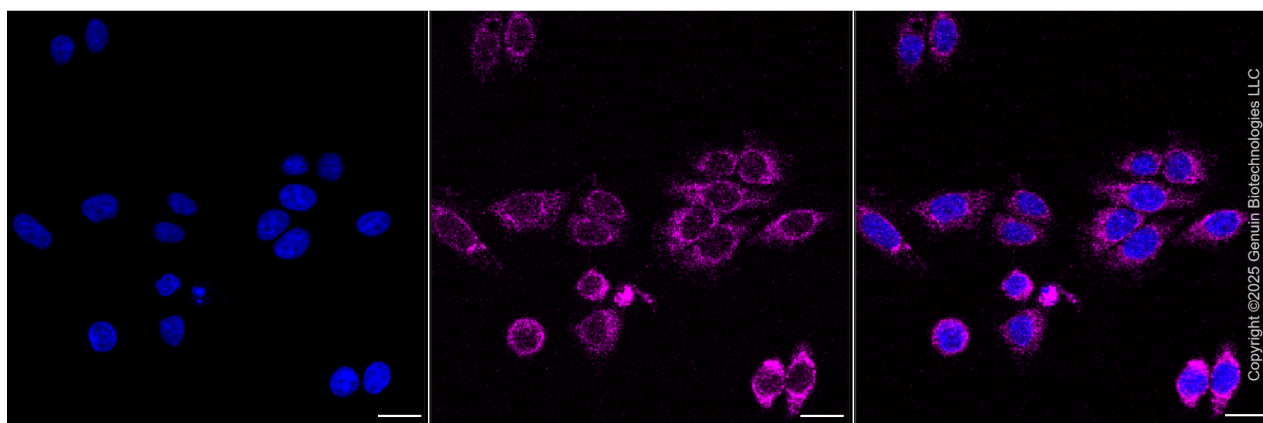
WWW.GENUINBIOTECH.COM

Note: This product is for research use only.

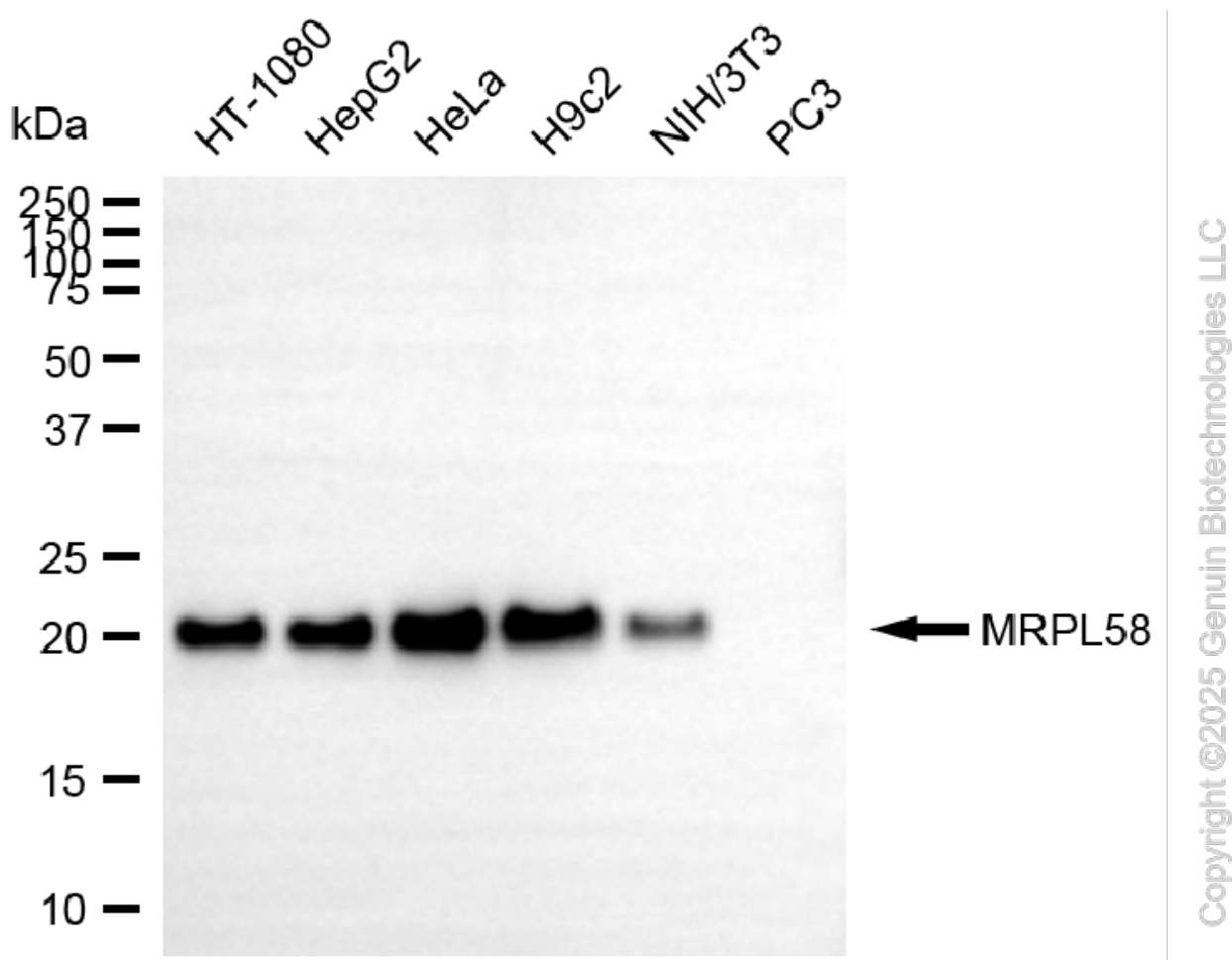
Validation Data



Flow cytometric analysis of MRPL58 expression in HepG2 cells using anti-MRPL58 antibody (Cat#5132, 1:2,000). Green, isotype control; red, MRPL58.



Immunocytochemical staining of HepG2 cells with anti-MRPL58 antibody (Cat#5132, 1:1,000). Nuclei were stained blue with DAPI; MRPL58 was stained magenta with Alexa Fluor® 647. Images were taken using Leica stellaris 5. Protein abundance based on laser Intensity and smart gain: Low. Scale bar, 20 μ m.



Western blotting analysis using anti-MRPL58 antibody (Cat#5132). Total cell lysates (30 μ g) from various cell lines were loaded and separated by SDS-PAGE. The blot was incubated with anti-MRPL58 antibody (Cat#5132, 1:1,000) and HRP-conjugated goat anti-mouse secondary antibody

SUPPORT

SUPPORT@GENUINBIOTECH.COM
TEL: +1-540-855-7041

ORDERS

SALES@GENUINBIOTECH.COM
FAX: +1-540-855-7041

WWW.GENUINBIOTECH.COM

(Cat#101, 1:20,000) respectively. Image was developed using FeQ™ ECL Substrate Kit (Cat#226).

SUPPORT

SUPPORT@GENUINBIOTECH.COM
TEL: +1-540-855-7041

ORDERS

SALES@GENUINBIOTECH.COM
FAX: +1-540-855-7041

WWW.GENUINBIOTECH.COM