

Catalog #: 51354

Aliases

EWI101; IGSF2; V7; Immunoglobulin superfamily member 2; IgSF2; Cell surface glycoprotein V7; Glu-Trp-Ile EWI motif-containing protein 101; EWI-101; CD101

Background

Gene Name: CD101

NCBI Gene Entry: [9398](#)

UniProt Entry: [Q93033](#)

Application Information

Molecular Weight: Predicted, 115 kDa; observed, 115 kDa

Clonality: Rabbit polyclonal antibody

Species Reactivity: Human, mouse, rat

Applications Tested: Western blotting (WB), immunocytochemistry (IC)

Immunogen

A synthesized peptide derived from human CD101

Isotype

Rabbit IgG

Storage Buffer

Supplied in PBS (pH 7.3) containing 30% glycerol, and 0.01% sodium azide.

Storage

Store at -20 °C for one year.

Recommended Dilutions

Western Blotting (WB): 1:500-1:1,000

Immunocytochemistry (IC): 1:50-1:200

Note: This product is for research use only.

Validation Data

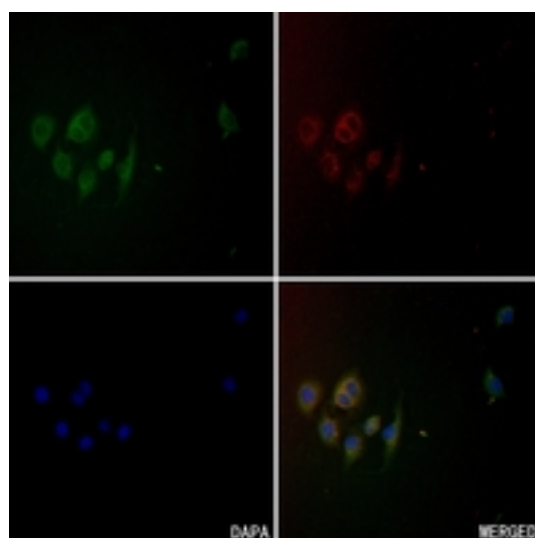
SUPPORT

SUPPORT@GENUINBIOTECH.COM
TEL: +1-540-855-7041

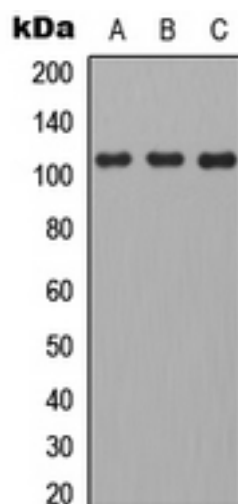
ORDERS

SALES@GENUINBIOTECH.COM
FAX: +1-540-855-7041

WWW.GENUINBIOTECH.COM



Immunocytochemical analysis of CD101 staining in A549 cells. Formalin-fixed cells were permeabilized with 0.1% Triton X-100 in TBS for 5-10 minutes and blocked with 3% BSA-PBS for 30 minutes at room temperature. Cells were probed with the primary antibody in 3% BSA-PBS and incubated overnight at 4 °C in a humidified chamber. Cells were washed with PBST and incubated with a AF488-conjugated secondary antibody (green) in PBS at room temperature in the dark. Phalloidin - AF594 was used to stain Actin filaments (red). DAPI was used to stain the cell nuclei (blue).



Western blotting analysis of CD101 expression in HEK293T (A), mouse brain (B), H9C2 (C) whole cell lysates.