

Catalog #: 5139

Aliases

GMPR2; Guanosine Monophosphate Reductase 2; Guanosine 5'-Monophosphate Oxidoreductase 2; GMP Reductase 2; EC 1.7.1.7; GMPR 2; Guanosine Monophosphate Reductase Isolog

Background

Gene Name: GMPR2

NCBI Gene Entry: [51292](#)

UniProt Entry: [Q9P2T1](#)

Application Information

Molecular Weight: Predicted, 38 kDa; observed, 38 kDa

Clonality: Mouse monoclonal antibody

Clone ID: 24GB15910

Species Reactivity: Human

Applications Tested: Western blotting (WB), flow cytometry (FCM), immunocytochemistry (IC)

Immunogen

Recombinant protein of human GMPR2

Isotype

Mouse IgG1

Storage Buffer

Supplied in PBS (pH 7.4) containing 50% glycerol, and 0.02% sodium azide.

Storage

Store at -20 °C for one year.

Recommended Dilutions

Western Blotting (WB): 1:200-1:1,000

Flow Cytometry (FCM): 1:2,000

Immunocytochemistry (IC): 1:100-1:1,000

Note: This product is for research use only.

Validation Data

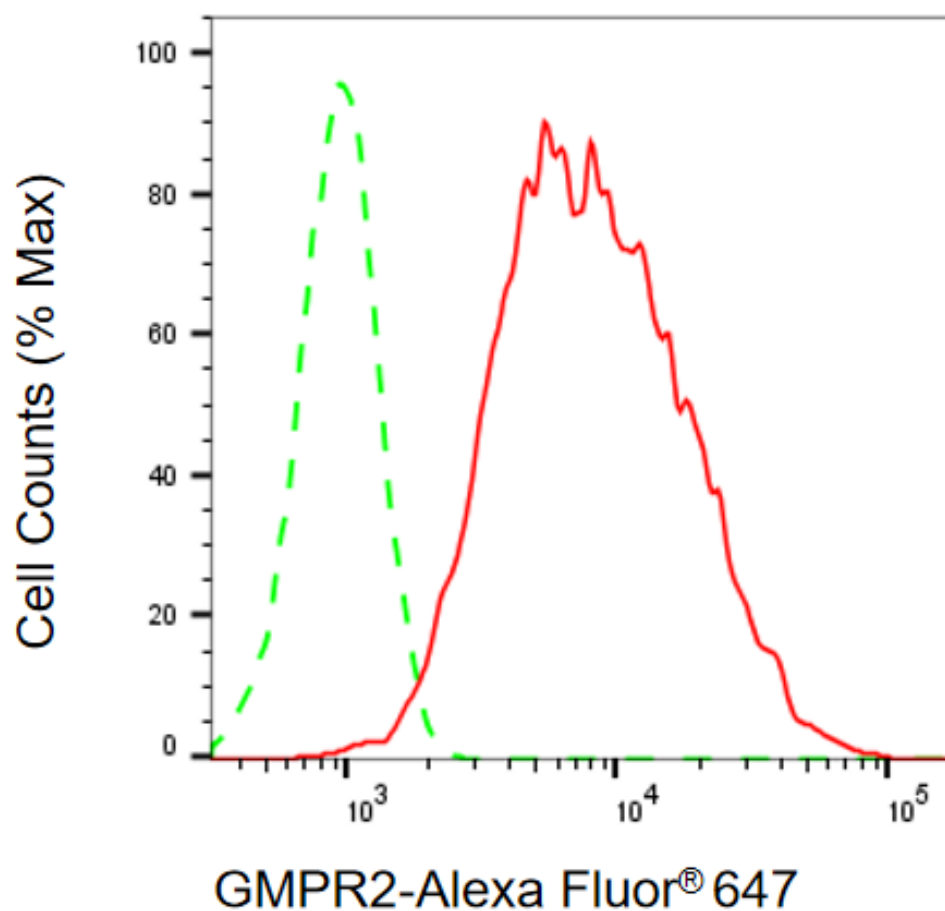
SUPPORT

SUPPORT@GENUINBIOTECH.COM
TEL: +1-540-855-7041

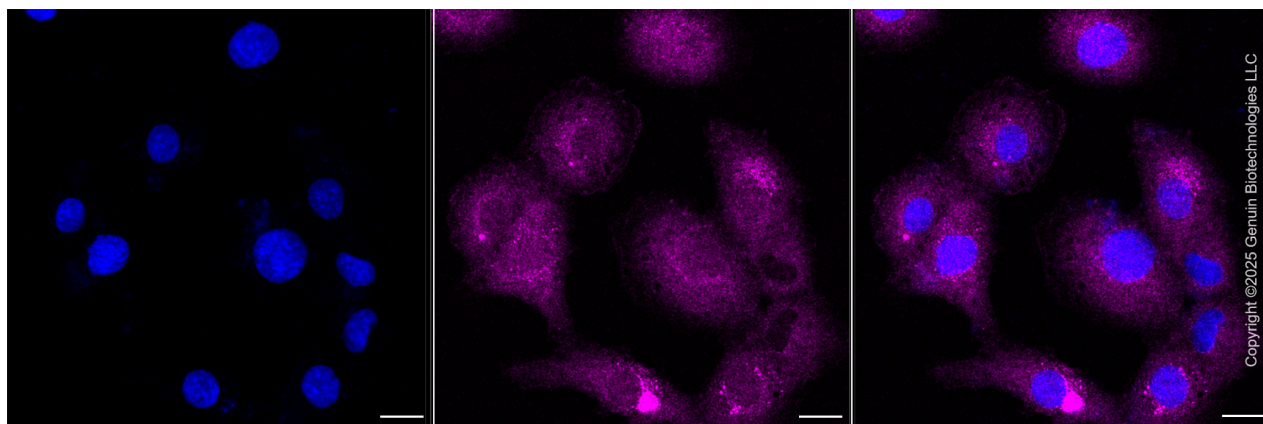
ORDERS

SALES@GENUINBIOTECH.COM
FAX: +1-540-855-7041

WWW.GENUINBIOTECH.COM



Flow cytometric analysis of GMPR2 expression in HT-1080 cells using anti-GMPR2 antibody (Cat#5139, 1:2,000) . Green, isotype control; red, GMPR2.



Immunocytochemical staining of HT-1080 cells with anti-GMPR2 antibody (Cat#5139, 1:1,000) . Nuclei were stained blue with DAPI; GMPR2 was stained magenta with Alexa Fluor® 647. Images were taken using Leica stellaris 5. Protein abundance based on laser Intensity and smart

SUPPORT

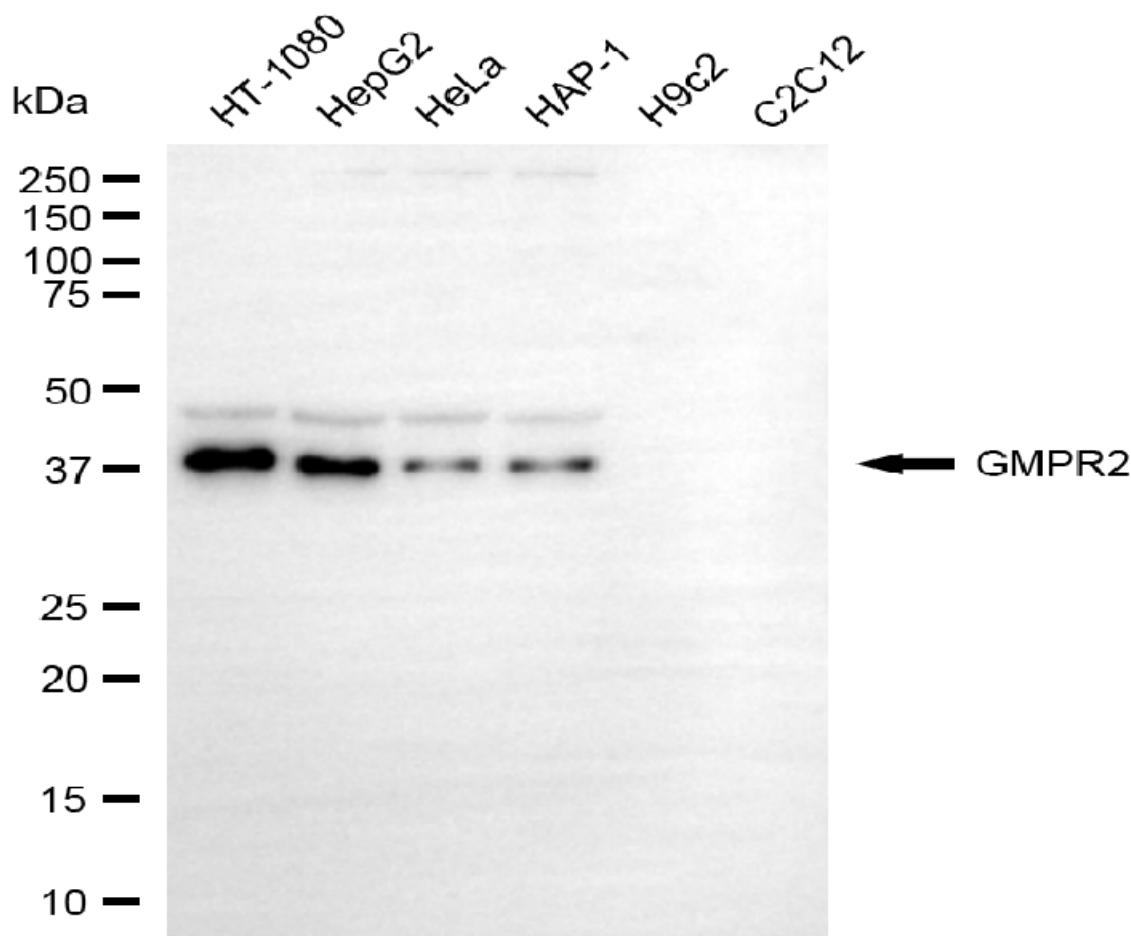
SUPPORT@GENUINBIOTECH.COM
TEL: +1-540-855-7041

ORDERS

SALES@GENUINBIOTECH.COM
FAX: +1-540-855-7041

WWW.GENUINBIOTECH.COM

gain: Medium. Scale bar, 20 μ m.



Copyright ©2025 Genuin Biotechnologies LLC

Western blotting analysis using anti-GMPR2 antibody (Cat#5139). Total cell lysates (30 μ g) from various cell lines were loaded and separated by SDS-PAGE. The blot was incubated with anti-GMPR2 antibody (Cat#5139, 1:1,000) and HRP-conjugated goat anti-mouse secondary antibody (Cat#101, 1:20,000) respectively. Image was developed using FeQ™ ECL Substrate Kit (Cat#226).

SUPPORT

SUPPORT@GENUINBIOTECH.COM
TEL: +1-540-855-7041

ORDERS

SALES@GENUINBIOTECH.COM
FAX: +1-540-855-7041

WWW.GENUINBIOTECH.COM