

Catalog #: 5141

Aliases

PSMD1; Proteasome 26S Subunit, Non-ATPase 1; P112; Rpn2; S1; Proteasome (Prosome, Macropain) 26S Subunit, Non-ATPase, 1; 26S Proteasome Non-ATPase Regulatory Subunit 1; 26S Proteasome Regulatory Subunit RPN2; 26S Proteasome Regulatory Subunit S1; 26S Proteasome Subunit P112

Background

Gene Name: PSMD1

NCBI Gene Entry: [5707](#)

UniProt Entry: [Q99460](#)

Application Information

Molecular Weight: Predicted, 106 kDa; observed, 106 kDa

Clonality: Mouse monoclonal antibody

Clone ID: 24GB15920

Species Reactivity: Human, mouse, rat

Applications Tested: Western blotting (WB), flow cytometry (FCM)

Immunogen

Recombinant protein of human PSMD1

Isotype

Mouse IgG1

Storage Buffer

Supplied in PBS (pH 7.4) containing 50% glycerol, and 0.02% sodium azide.

Storage

Store at -20 °C for one year.

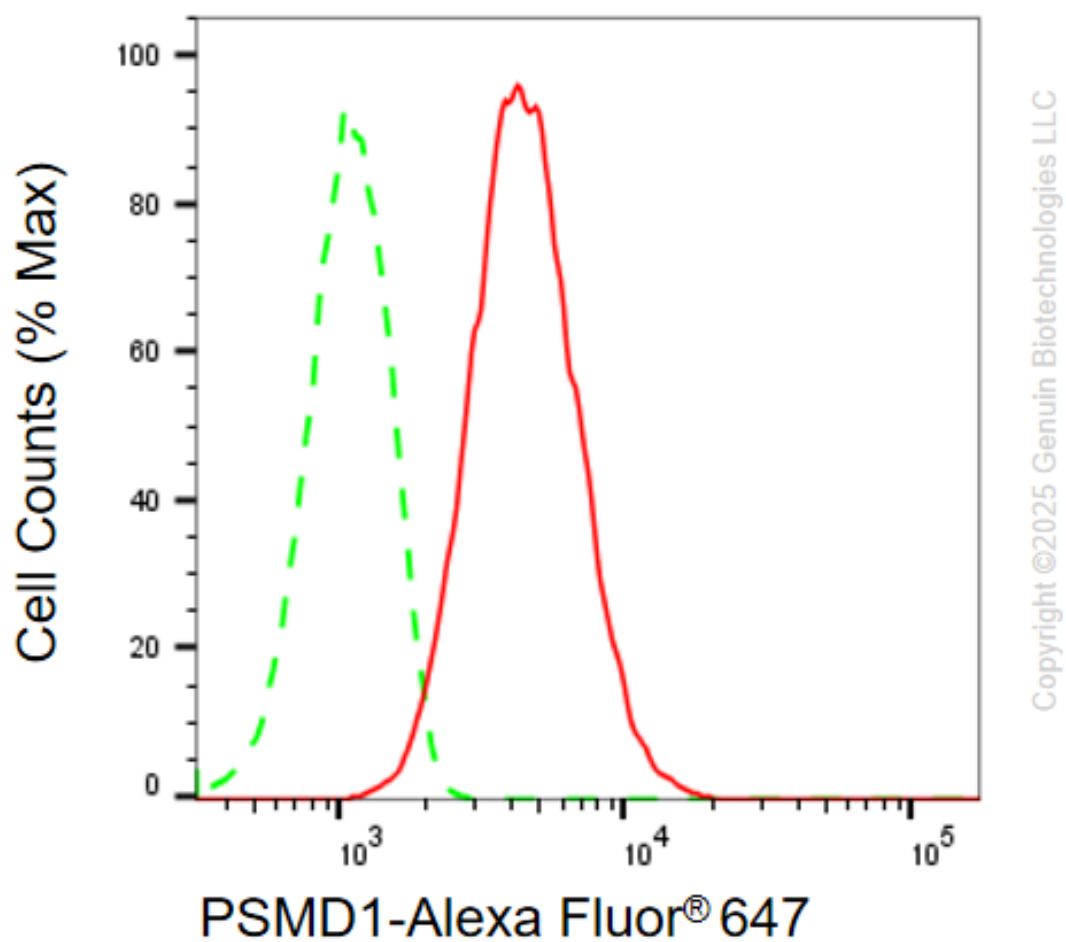
Recommended Dilutions

Western Blotting (WB): 1:400-1:2,000

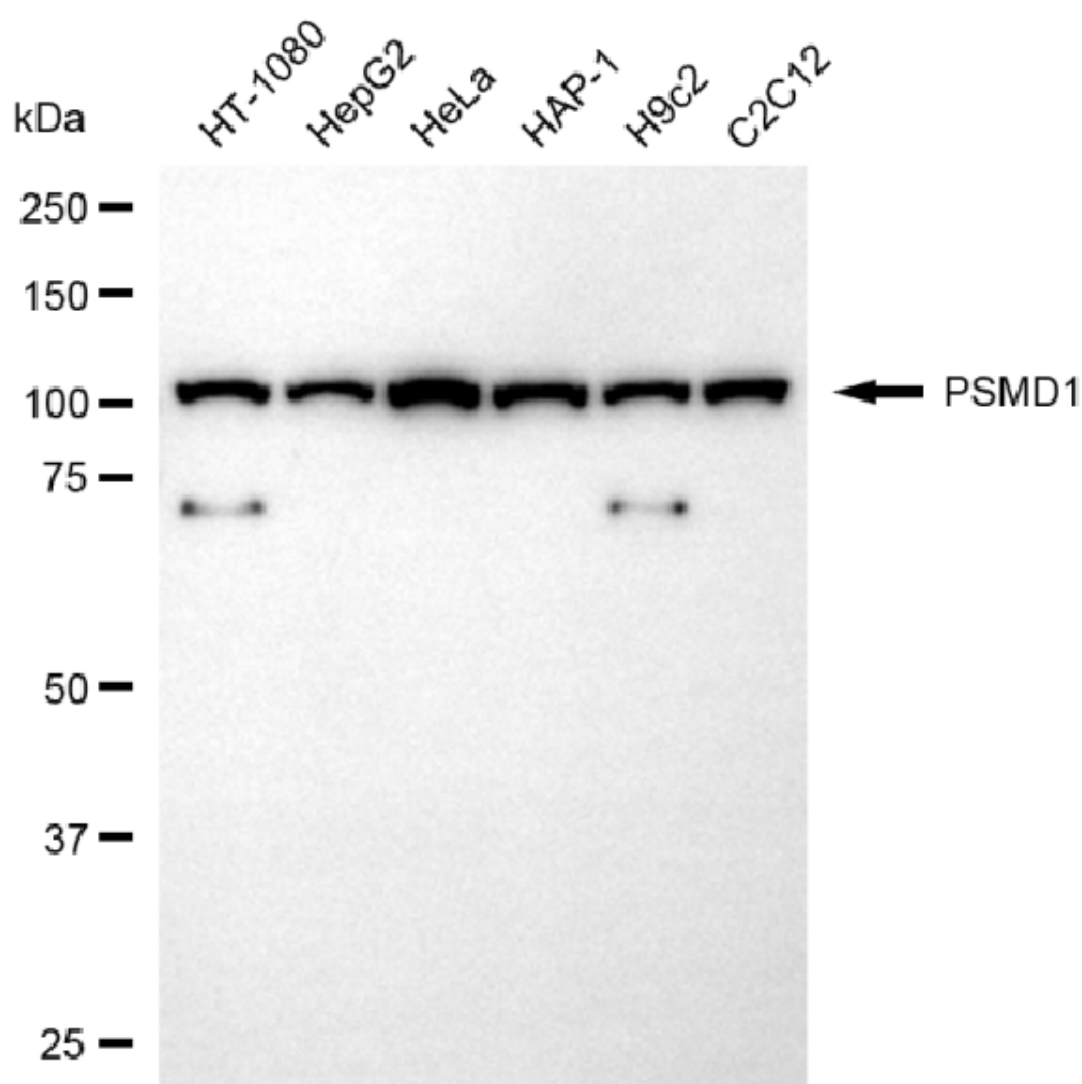
Flow Cytometry (FCM): 1:2,000

Note: This product is for research use only.

Validation Data



Flow cytometric analysis of PSMD1 expression in C2C12 cells using anti-PSMD1 antibody (Cat#5141, 1:2,000). Green, isotype control; red, PSMD1.



Copyright ©2025 Genuin Biotechnologies LLC

Western blotting analysis using anti-PSMD1 antibody (Cat#5141). Total cell lysates (30 μ g) from various cell lines were loaded and separated by SDS-PAGE. The blot was incubated with anti-PSMD1 antibody (Cat#5141, 1:2,000) and HRP-conjugated goat anti-mouse secondary antibody (Cat#101, 1:20,000) respectively. Image was developed using NaQ™ ECL Substrate Kit (Cat#716).

SUPPORT

SUPPORT@GENUINBIOTECH.COM
TEL: +1-540-855-7041

ORDERS

SALES@GENUINBIOTECH.COM
FAX: +1-540-855-7041

WWW.GENUINBIOTECH.COM