

Catalog #: 51411

Aliases

OGR1; Ovarian cancer G-protein coupled receptor 1; OGR-1; G-protein coupled receptor 68; GPR12A; Sphingosylphosphorylcholine receptor

Background

Gene Name: GPR68

NCBI Gene Entry: [8111](#)

UniProt Entry: [Q15743](#)

Application Information

Molecular Weight: Predicted, 41 kDa; observed, 41 kDa

Clonality: Rabbit polyclonal antibody

Species Reactivity: Human, mouse, rat, bovine

Applications Tested: Western blotting (WB), immunocytochemistry (IC)

Immunogen

A synthesized peptide derived from human GPR68

Isotype

Rabbit IgG

Storage Buffer

Supplied in PBS (pH 7.3) containing 30% glycerol, and 0.01% sodium azide.

Storage

Store at -20 °C for one year.

Recommended Dilutions

Western Blotting (WB): 1:500-1:1,000

Immunocytochemistry (IC): 1:100-1:500

Note: This product is for research use only.

Validation Data

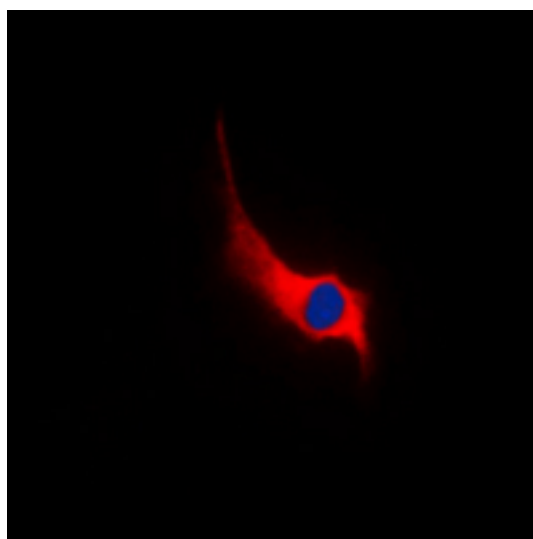
SUPPORT

SUPPORT@GENUINBIOTECH.COM
TEL: +1-540-855-7041

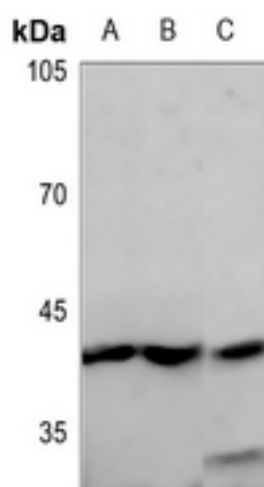
ORDERS

SALES@GENUINBIOTECH.COM
FAX: +1-540-855-7041

WWW.GENUINBIOTECH.COM



Immunocytochemical analysis of GPR68 staining in HeLa cells. Formalin-fixed cells were permeabilized with 0.1% Triton X-100 in TBS for 5-10 minutes and blocked with 3% BSA-PBS for 30 minutes at room temperature. Cells were probed with the primary antibody in 3% BSA-PBS and incubated overnight at 4 °C in a humidified chamber. Cells were washed with PBST and incubated with a DyLight 594-conjugated secondary antibody (red) in PBS at room temperature in the dark. DAPI was used to stain the cell nuclei (blue).



Western blotting analysis of GPR68 expression in mouse muscle (A), mouse testis (B), rat testis (C) whole cell lysates.

SUPPORT

SUPPORT@GENUINBIOTECH.COM
TEL: +1-540-855-7041

ORDERS

SALES@GENUINBIOTECH.COM
FAX: +1-540-855-7041

WWW.GENUINBIOTECH.COM