

Catalog #: 5146

Aliases

PAM; Peptidylglycine Alpha-Amidating Monooxygenase; PAM-1; PAL; PHM; Peptidyl-Alpha-Hydroxyglycine Alpha-Amidating Lyase; Peptidylglycine Alpha-Hydroxylating Monooxygenase; Peptidyl-Glycine Alpha-Amidating Monooxygenase; Pancreatic Peptidylglycine Alpha-Amidating Monooxygenase; Peptidyl Alpha-Amidating Enzyme; Peptidylglycine 2-Hydroxylase; Peptidylamidoglycolate Lyase

Background

Gene Name: PAM

NCBI Gene Entry: [5066](#)

UniProt Entry: [P19021](#)

Application Information

Molecular Weight: Predicted, 108 kDa; observed, 108 kDa

Clonality: Mouse oligoclonal antibody

Species Reactivity: Human, mouse, rat

Applications Tested: Western blotting (WB), flow cytometry (FCM)

Immunogen

Recombinant protein of human PAM

Isotype

Mouse IgG

Storage Buffer

Supplied in PBS (pH 7.4) containing 50% glycerol, and 0.02% sodium azide.

Storage

Store at -20 °C for one year.

Recommended Dilutions

Western Blotting (WB): 1:200-1:1,000

Flow Cytometry (FCM): 1:2,000

Note: This product is for research use only.

SUPPORT

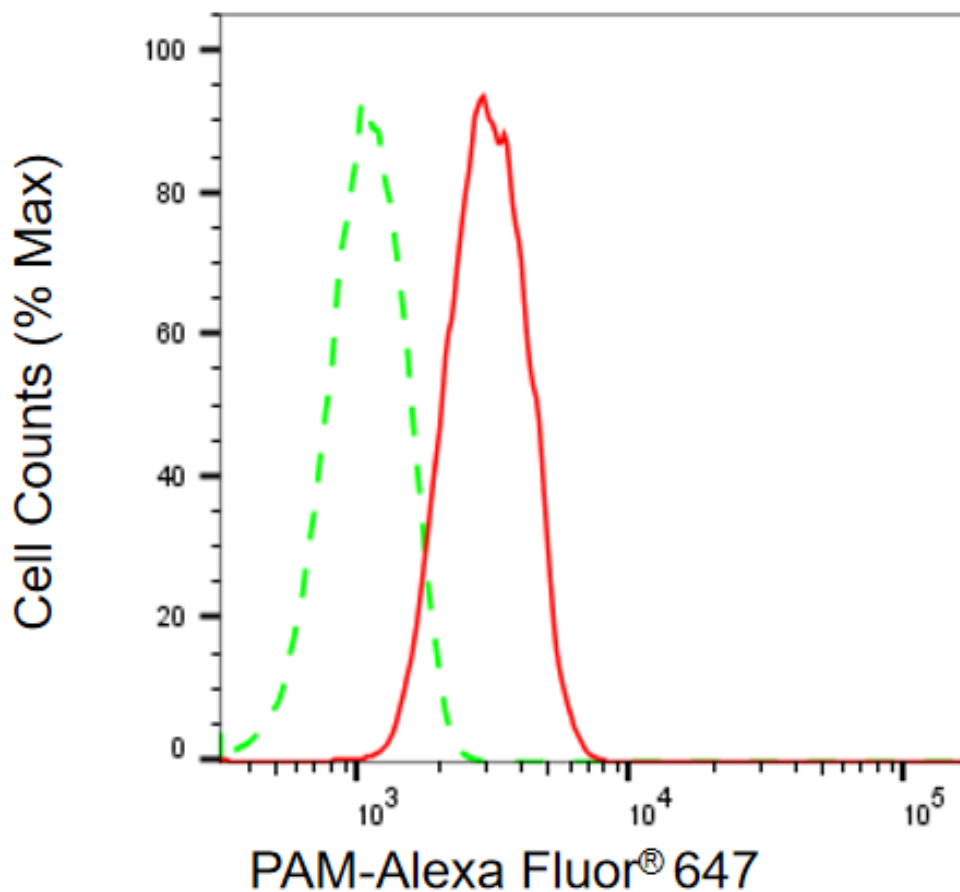
SUPPORT@GENUINBIOTECH.COM
TEL: +1-540-855-7041

ORDERS

SALES@GENUINBIOTECH.COM
FAX: +1-540-855-7041

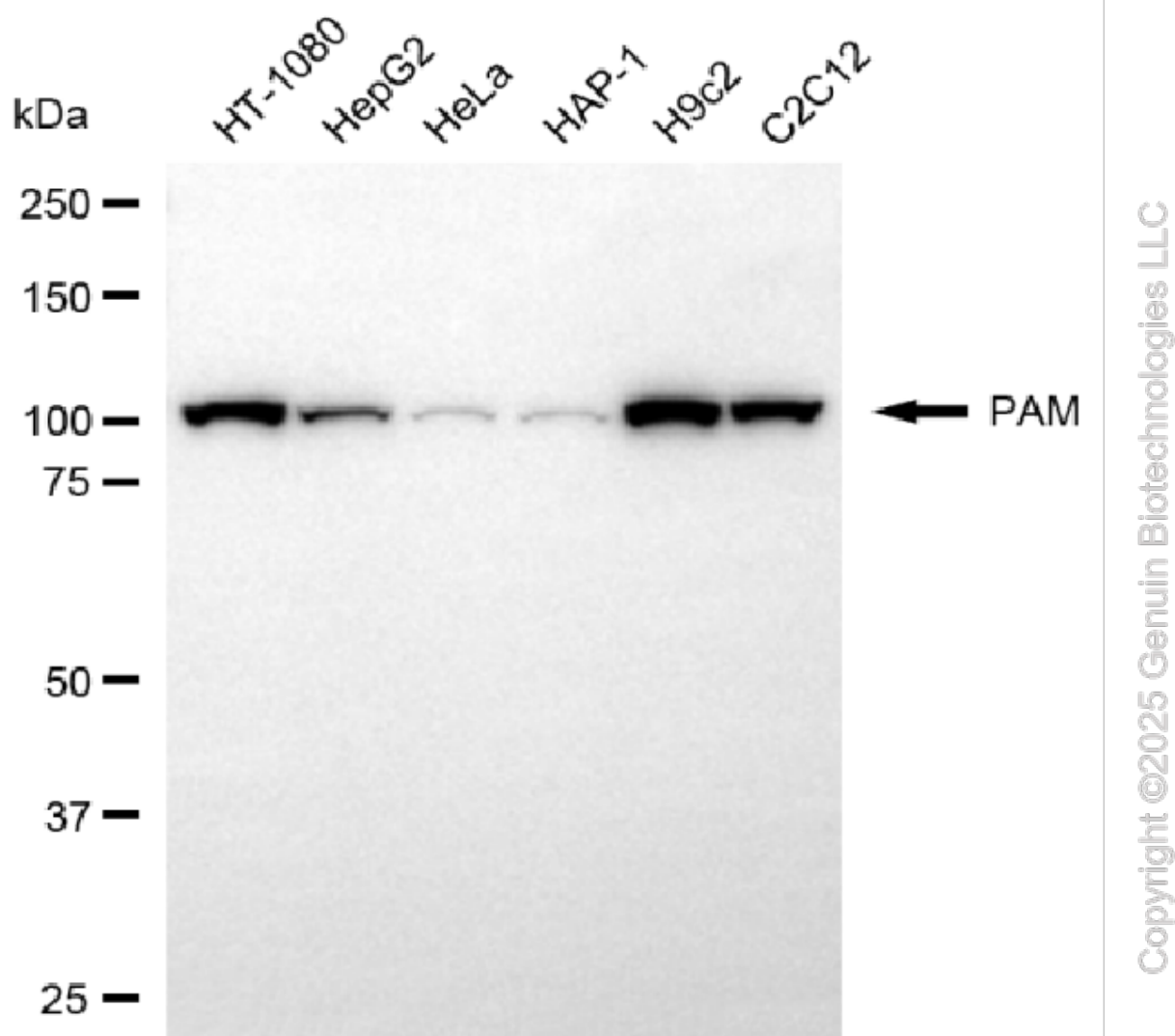
WWW.GENUINBIOTECH.COM

Validation Data



Copyright ©2025 Genuin Biotechnologies LLC

Flow cytometric analysis of PAM expression in C2C12 cells using anti-PAM antibody (Cat#5146, 1:2,000) . Green, isotype control; red, PAM.



Western blotting analysis using anti-PAM antibody (Cat#5146). Total cell lysates (30 μ g) from various cell lines were loaded and separated by SDS-PAGE. The blot was incubated with anti-PAM antibody (Cat#5146, 1:1,000) and HRP-conjugated goat anti-mouse secondary antibody (Cat#101, 1:20,000) respectively. Image was developed using NaQ™ ECL Substrate Kit (Cat#716).