

Catalog #: 5147

Aliases

SH3RF1; SH3 Domain Containing Ring Finger 1; RNF142; POSH; KIAA1494; SH3MD2; SH3 Domain-Containing RING Finger Protein 1; RING-Type E3 Ubiquitin Transferase SH3RF1; E3 Ubiquitin-Protein Ligase SH3RF1; SH3 Multiple Domains Protein 2; SH3 Multiple Domains 2; Plenty Of SH3 Domains; Plenty Of SH3s; Putative E3 Ubiquitin-Protein Ligase SH3RF1; Ring Finger Protein 142; RING Finger Protein 142; Protein POSH; EC 2.3.2.27; EC 6.3.2; POSH1

Background

Gene Name: SH3RF1

NCBI Gene Entry: [57630](#)

UniProt Entry: [Q7Z6J0](#)

Application Information

Molecular Weight: Predicted, 93 kDa; observed, 100 kDa

Clonality: Mouse oligoclonal antibody

Species Reactivity: Human, mouse, rat

Applications Tested: Western blotting (WB), flow cytometry (FCM)

Immunogen

Recombinant protein of human SH3RF1

Isotype

Mouse IgG

Storage Buffer

Supplied in PBS (pH 7.4) containing 50% glycerol, and 0.02% sodium azide.

Storage

Store at -20 °C for one year.

Recommended Dilutions

Western Blotting (WB): 1:200-1:1,000

Flow Cytometry (FCM): 1:2,000

Note: This product is for research use only.

SUPPORT

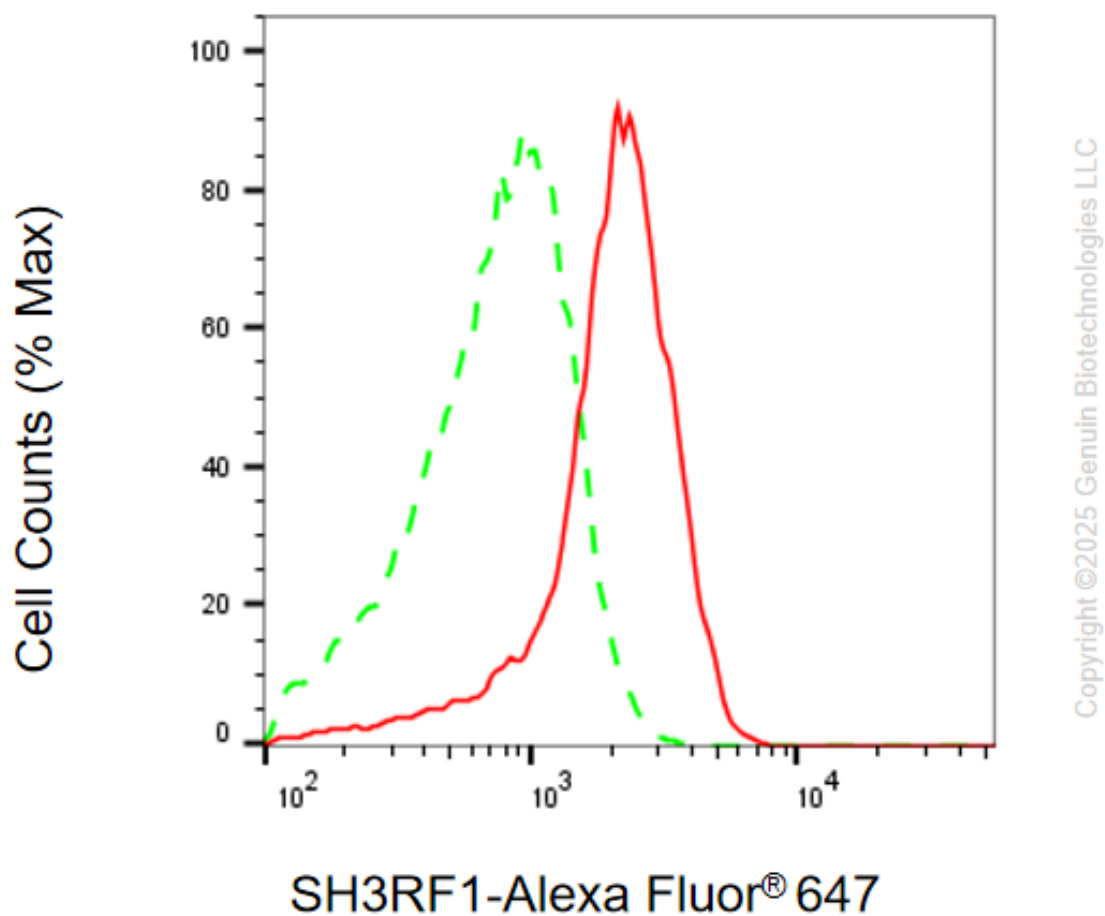
SUPPORT@GENUINBIOTECH.COM
TEL: +1-540-855-7041

ORDERS

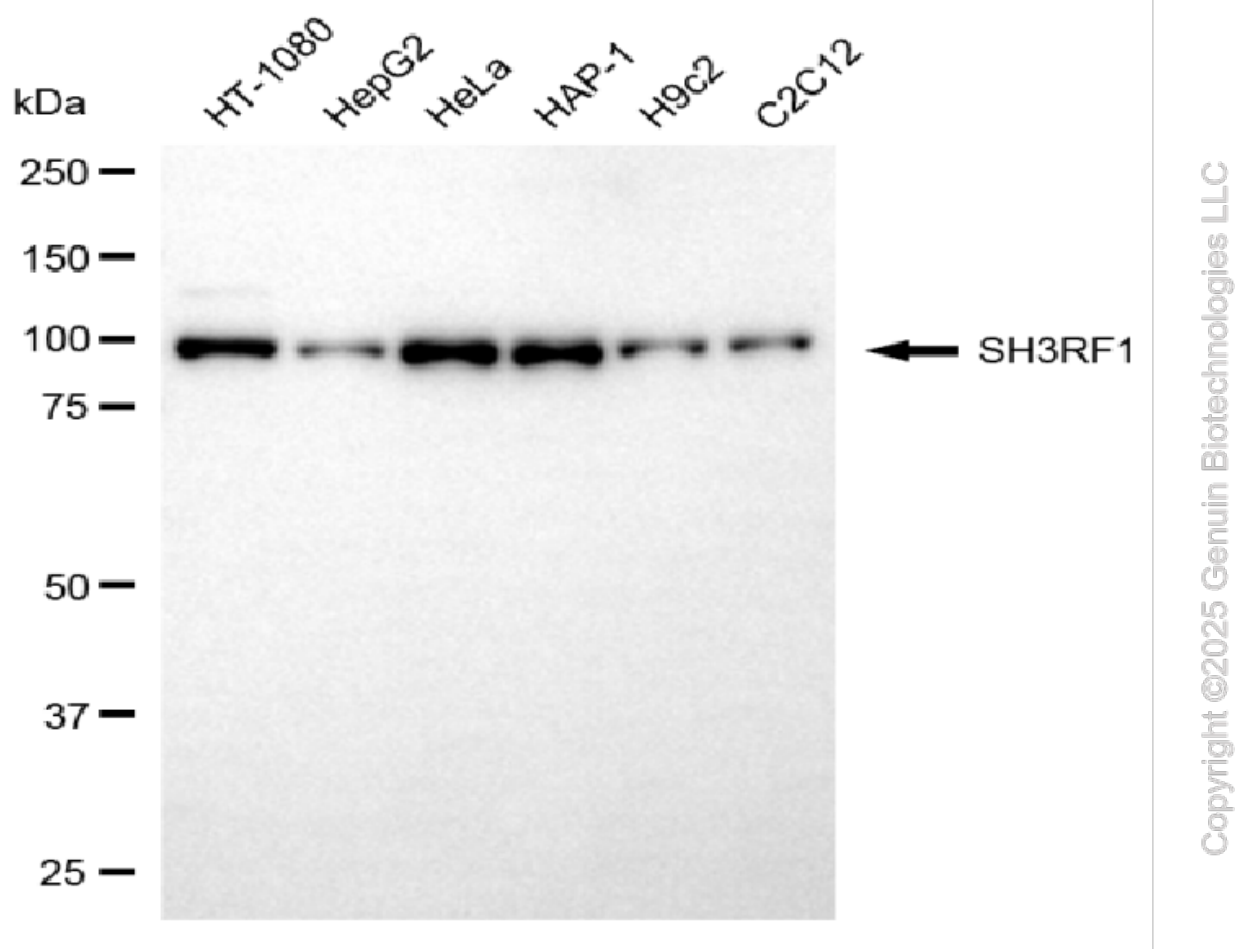
SALES@GENUINBIOTECH.COM
FAX: +1-540-855-7041

WWW.GENUINBIOTECH.COM

Validation Data



Flow cytometric analysis of SH3RF1 expression in HAP-1 cells using anti-SH3RF1 antibody (Cat#5147, 1:2,000) . Green, isotype control; red, SH3RF1.



Western blotting analysis using anti-SH3RF1 antibody (Cat#5147). Total cell lysates (30 μ g) from various cell lines were loaded and separated by SDS-PAGE. The blot was incubated with anti-SH3RF1 antibody (Cat#5147, 1:1,000) and HRP-conjugated goat anti-mouse secondary antibody (Cat#101, 1:20,000) respectively. Image was developed using NaQ™ ECL Substrate Kit (Cat#716).

SUPPORT

SUPPORT@GENUINBIOTECH.COM
TEL: +1-540-855-7041

ORDERS

SALES@GENUINBIOTECH.COM
FAX: +1-540-855-7041

WWW.GENUINBIOTECH.COM