

Catalog #: 51476

Aliases

POM121; KIAA0618; NUP121; POM121A; Nuclear envelope pore membrane protein POM 121; Nuclear envelope pore membrane protein POM 121A; Nucleoporin Nup121; Pore membrane protein of 121 kDa; POM121B; Putative nuclear envelope pore membrane protein POM 121B; POM121C; Nuclear envelope pore membrane protein POM 121C; Nuclear pore membrane protein 121-2; POM121-2; Pore membrane protein of 121 kDa C

Background

Gene Name: POM121

NCBI Gene Entry: [9883](#)

UniProt Entry: [Q96HA1/A6NF01/A8CG34](#)

Application Information

Molecular Weight: Predicted, 127,83,125 kDa; observed, 125,100 kDa

Clonality: Rabbit polyclonal antibody

Species Reactivity: Human, mouse, rat

Applications Tested: Western blotting (WB), immunohistochemistry (IHC)

Immunogen

A synthesized peptide derived from human POM121

Isotype

Rabbit IgG

Storage Buffer

Supplied in PBS (pH 7.3) containing 30% glycerol, and 0.01% sodium azide.

Storage

Store at -20 °C for one year.

Recommended Dilutions

Western Blotting (WB): 1:500-1:1,000

Immunohistochemistry (IHC): 1:100-1:200

Note: This product is for research use only.

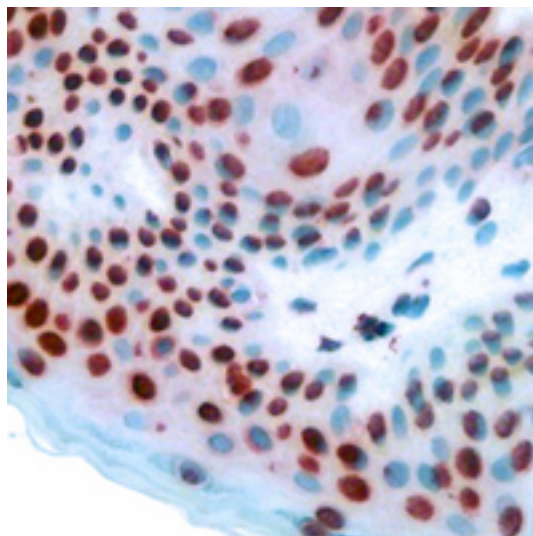
SUPPORT

SUPPORT@GENUINBIOTECH.COM
TEL: +1-540-855-7041

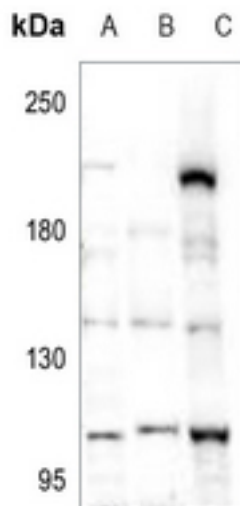
ORDERS

SALES@GENUINBIOTECH.COM
FAX: +1-540-855-7041

WWW.GENUINBIOTECH.COM

Validation Data

Immunohistochemical analysis of POM121 staining in human skin formalin fixed paraffin embedded tissue section. The section was pre-treated using heat mediated antigen retrieval with sodium citrate buffer (pH 6.0). The section was then incubated with the antibody at room temperature and detected using an HRP conjugated compact polymer system. DAB was used as the chromogen. The section was then counterstained with haematoxylin and mounted with DPX.



Western blotting analysis of POM121 expression in mouse kidney (A), mouse muscle (B), rat muscle (C) whole cell lysates.