

Catalog #: 5149

Aliases

WWP1; WW Domain Containing E3 Ubiquitin Protein Ligase 1; AIP5; NEDD4-Like E3 Ubiquitin-Protein Ligase WWP1; HECT-Type E3 Ubiquitin Transferase WWP1; TGIF-Interacting Ubiquitin Ligase 1; WW Domain-Containing Protein 1; DKFZP434D2111; Tiul1; Nedd-4-Like Ubiquitin-Protein Ligase; Atrophin-1 Interacting Protein 5; Atrophin-1-Interacting Protein 5; EC 2.3.2.26; EC 6.3.2; HSDRP1

Background

Gene Name: WWP1

NCBI Gene Entry: [11059](#)

UniProt Entry: [Q9H0M0](#)

Application Information

Molecular Weight: Predicted, 105 kDa; observed, 125 kDa

Clonality: Mouse oligoclonal antibody

Species Reactivity: Human

Applications Tested: Western blotting (WB), flow cytometry (FCM), immunocytochemistry (IC)

Immunogen

Recombinant protein of human WWP1

Isotype

Mouse IgG

Storage Buffer

Supplied in PBS (pH 7.4) containing 50% glycerol, and 0.02% sodium azide.

Storage

Store at -20 °C for one year.

Recommended Dilutions

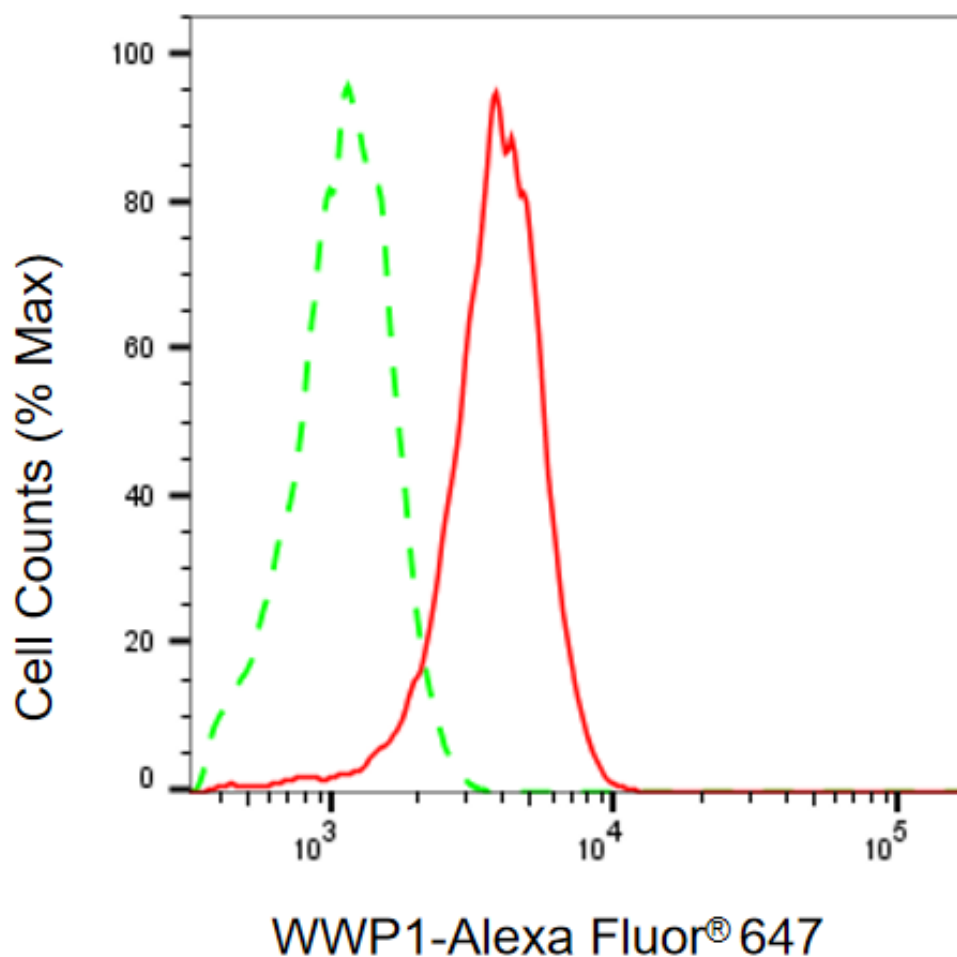
Western Blotting (WB): 1:400-1:2,000

Flow Cytometry (FCM): 1:2,000

Immunocytochemistry (IC): 1:100-1:1,000

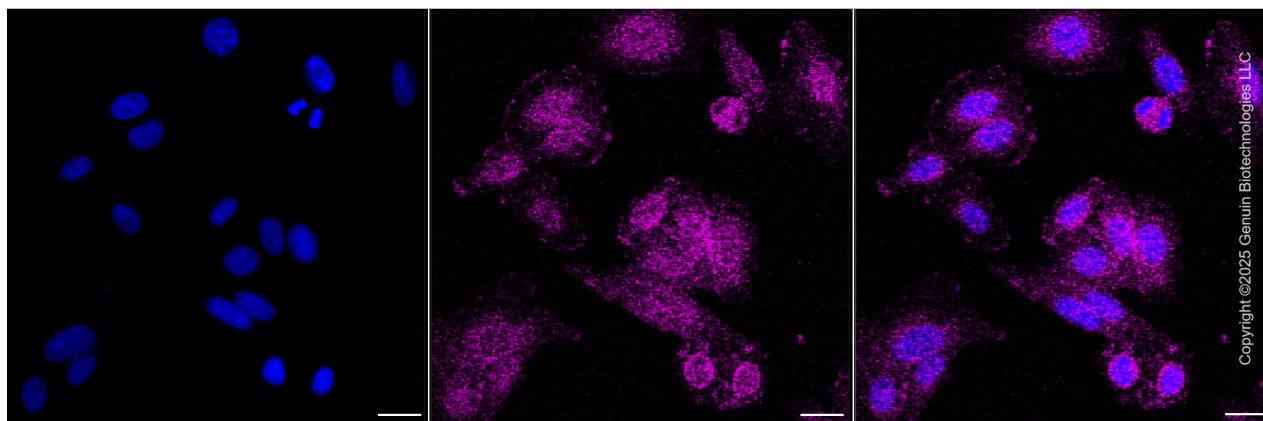
Note: This product is for research use only.

Validation Data



Copyright ©2025 Genuin Biotechnologies LLC

Flow cytometric analysis of WWP1 expression in HepG2 cells using anti-WWP1 antibody (Cat#5149, 1:2,000) . Green, isotype control; red, WWP1.



SUPPORT

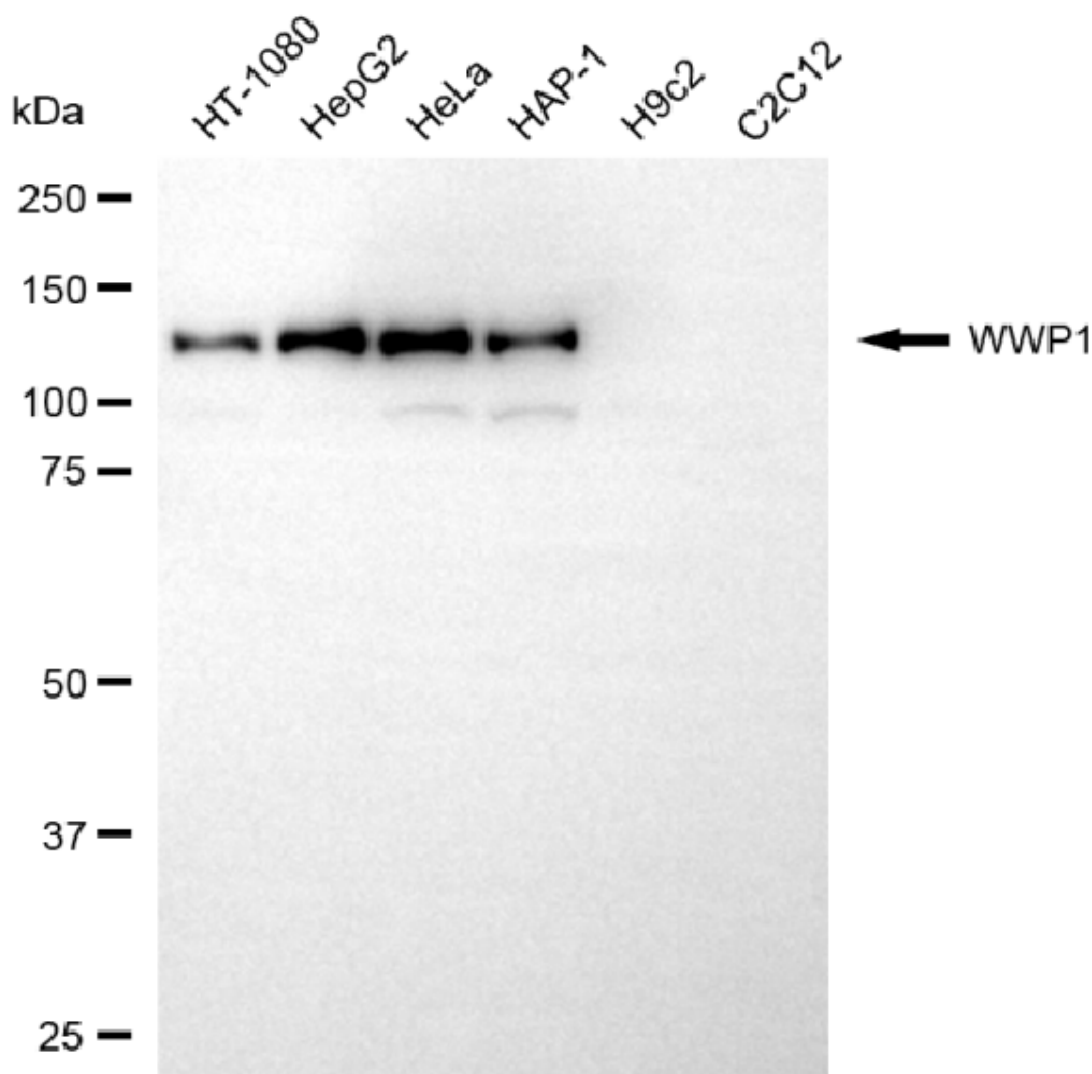
SUPPORT@GENUINBIOTECH.COM
TEL: +1-540-855-7041

ORDERS

SALES@GENUINBIOTECH.COM
FAX: +1-540-855-7041

WWW.GENUINBIOTECH.COM

Immunocytochemical staining of HepG2 cells with anti-WWP1 antibody (Cat#5149, 1:1,000) . Nuclei were stained blue with DAPI; WWP1 was stained magenta with Alexa Fluor® 647. Images were taken using Leica stellaris 5. Protein abundance based on laser Intensity and smart gain: Low. Scale bar, 20 μ m.



Copyright ©2025 Genuin Biotechnologies LLC

Western blotting analysis using anti-WWP1 antibody (Cat#5149). Total cell lysates (30 μ g) from various cell lines were loaded and separated by SDS-PAGE. The blot was incubated with anti-WWP1 antibody (Cat#5149, 1:2,000) and HRP-conjugated goat anti-mouse secondary antibody (Cat#101, 1:20,000) respectively. Image was developed using FeQ™ ECL Substrate Kit (Cat#226).

SUPPORT

SUPPORT@GENUINBIOTECH.COM
TEL: +1-540-855-7041

ORDERS

SALES@GENUINBIOTECH.COM
FAX: +1-540-855-7041

WWW.GENUINBIOTECH.COM