

Catalog #: 51511

Aliases

MCT4; Monocarboxylate transporter 4; MCT 4; Solute carrier family 16 member 3

Background

Gene Name: SLC16A3

NCBI Gene Entry: [9123](#)

UniProt Entry: [O15427](#)

Application Information

Molecular Weight: Predicted, 49 kDa; observed, 50 kDa

Clonality: Rabbit polyclonal antibody

Species Reactivity: Human, mouse, rat, pig

Applications Tested: Western blotting (WB)

Immunogen

A synthesized peptide derived from human MCT4

Isotype

Rabbit IgG

Storage Buffer

Supplied in PBS (pH 7.3) containing 30% glycerol, and 0.01% sodium azide.

Storage

Store at -20 °C for one year.

Recommended Dilutions

Western Blotting (WB): 1:500-1:1,000

Note: This product is for research use only.

Validation Data

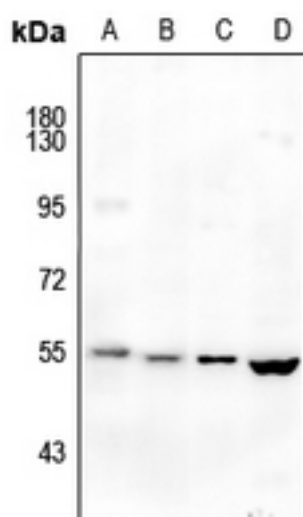
SUPPORT

SUPPORT@GENUINBIOTECH.COM
TEL: +1-540-855-7041

ORDERS

SALES@GENUINBIOTECH.COM
FAX: +1-540-855-7041

WWW.GENUINBIOTECH.COM



Western blotting analysis of MCT4 expression in CT26 (A), C6 (B), mouse muscle (C), rat brain (D) whole cell lysates.

SUPPORT

SUPPORT@GENUINBIOTECH.COM
TEL: +1-540-855-7041

ORDERS

SALES@GENUINBIOTECH.COM
FAX: +1-540-855-7041

WWW.GENUINBIOTECH.COM