

Catalog #: 51525

Aliases

TCF4; BHLHB19; ITF2; SEF2; Transcription factor 4; TCF-4; Class B basic helix-loop-helix protein 19; bHLHb19; Immunoglobulin transcription factor 2; ITF-2; SL3-3 enhancer factor 2; SEF-2; TCF12; BHLHB20; HEB; HTF4; Transcription factor 12; TCF-12; Class B basic helix-loop-helix protein 20; bHLHb20; DNA-binding protein HTF4; E-box-binding protein; Transcription factor HTF-4

Background

Gene Name: TCF4/TCF12

NCBI Gene Entry: [6925/6938](#)

UniProt Entry: [P15884/Q99081](#)

Application Information

Molecular Weight: Predicted, 71,72 kDa; observed, 70 kDa

Clonality: Rabbit polyclonal antibody

Species Reactivity: Human, mouse, rat, bovine, chicken, pig

Applications Tested: Western blotting (WB), immunohistochemistry (IHC)

Immunogen

A synthesized peptide derived from human TCF4/12

Isotype

Rabbit IgG

Storage Buffer

Supplied in PBS (pH 7.3) containing 30% glycerol, and 0.01% sodium azide.

Storage

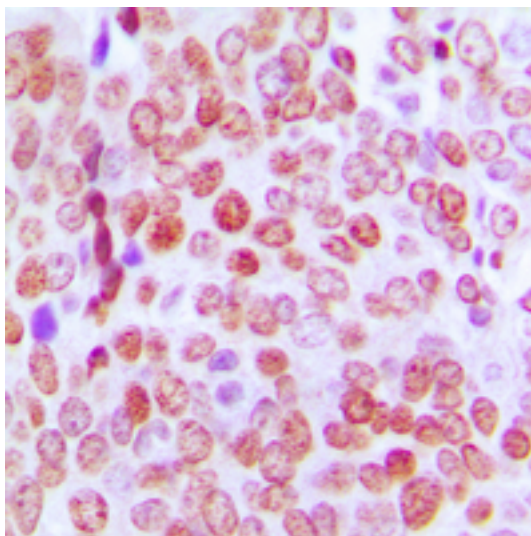
Store at -20 °C for one year.

Recommended Dilutions

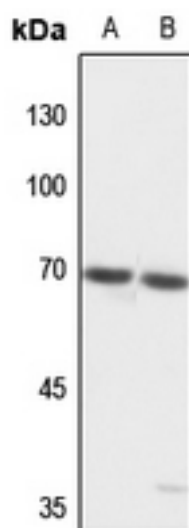
Western Blotting (WB): 1:500-1:1,000

Immunohistochemistry (IHC): 1:100-1:200

Note: This product is for research use only.

Validation Data

Immunohistochemical analysis of TCF4/12 staining in human prostate cancer formalin fixed paraffin embedded tissue section. The section was pre-treated using heat mediated antigen retrieval with sodium citrate buffer (pH 6.0). The section was then incubated with the antibody at room temperature and detected using an HRP conjugated compact polymer system. DAB was used as the chromogen. The section was then counterstained with haematoxylin and mounted with DPX.



Western blotting analysis of TCF4/12 expression in H446 (A), mouse liver (B) whole cell lysates.