

## Catalog #: 5154

### Aliases

TACO1; Translational Activator Of Cytochrome C Oxidase I; CCDC44; Translational Activator Of Mitochondrially Encoded Cytochrome C Oxidase I; Translational Activator Of Cytochrome C Oxidase 1; Coiled-Coil Domain-Containing Protein 44; Translational Activator Of COX I; Translational Activator Of Mitochondrially-Encoded Cytochrome C Oxidase I; Coiled-Coil Domain Containing 44; Clone HQ0477 PRO0477p; MC4DN8

### Background

Gene Name: TACO1

NCBI Gene Entry: [51204](#)

UniProt Entry: [Q9BSH4](#)

### Application Information

Molecular Weight: Predicted, 32 kDa; observed, 30 kDa

Clonality: Mouse oligoclonal antibody

Species Reactivity: Human, mouse

Applications Tested: Western blotting (WB), flow cytometry (FCM), immunocytochemistry (IC)

### Immunogen

Recombinant protein of human TACO1

### Isotype

Mouse IgG

### Storage Buffer

Supplied in PBS (pH 7.4) containing 50% glycerol, and 0.02% sodium azide.

### Storage

Store at -20 °C for one year.

### Recommended Dilutions

Western Blotting (WB): 1:400-1:2,000

Flow Cytometry (FCM): 1:2,000

Immunocytochemistry (IC): 1:100-1:1,000

---

#### SUPPORT

SUPPORT@GENUINBIOTECH.COM  
TEL: +1-540-855-7041

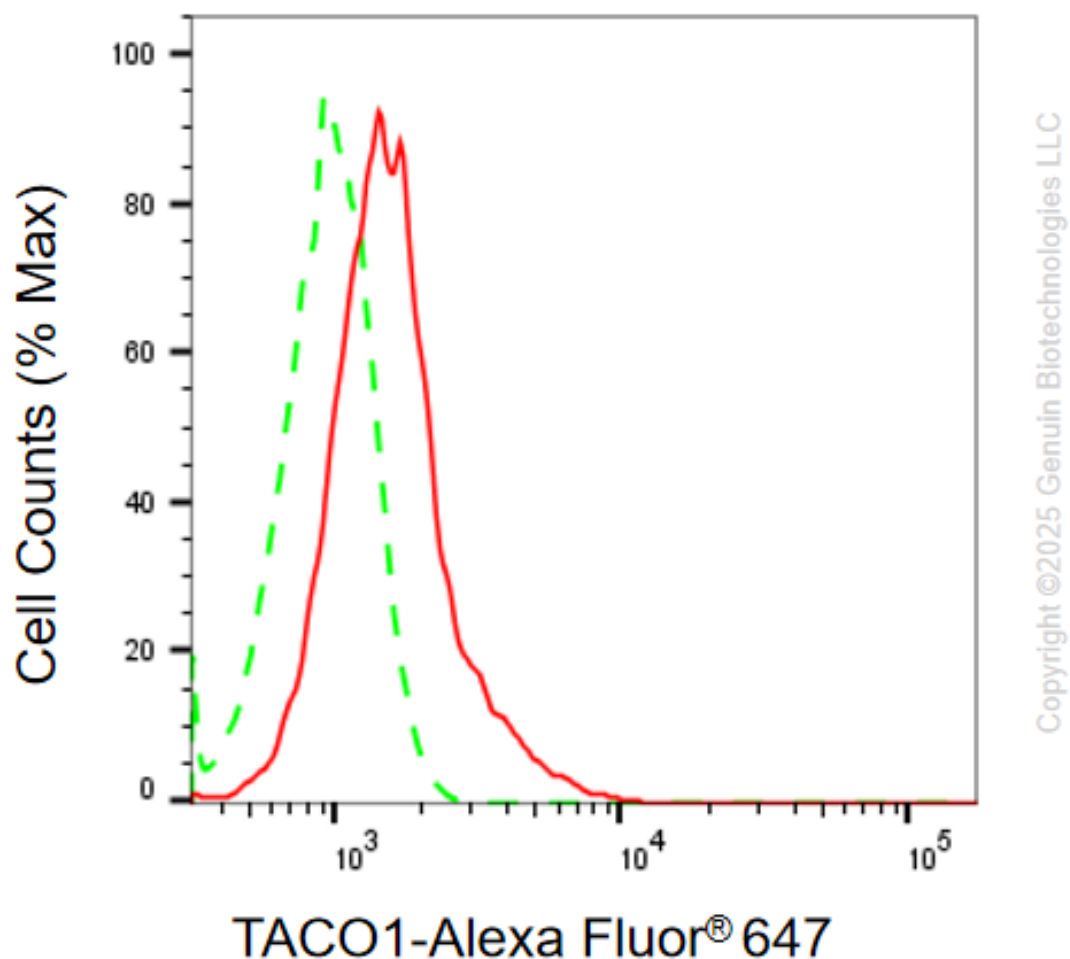
#### ORDERS

SALES@GENUINBIOTECH.COM  
FAX: +1-540-855-7041

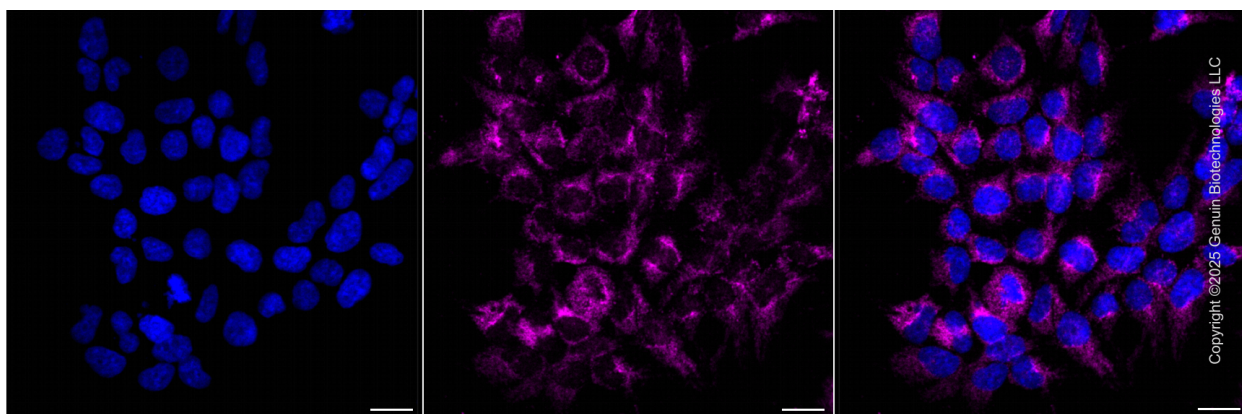
#### WWW.GENUINBIOTECH.COM

**Note:** This product is for research use only.

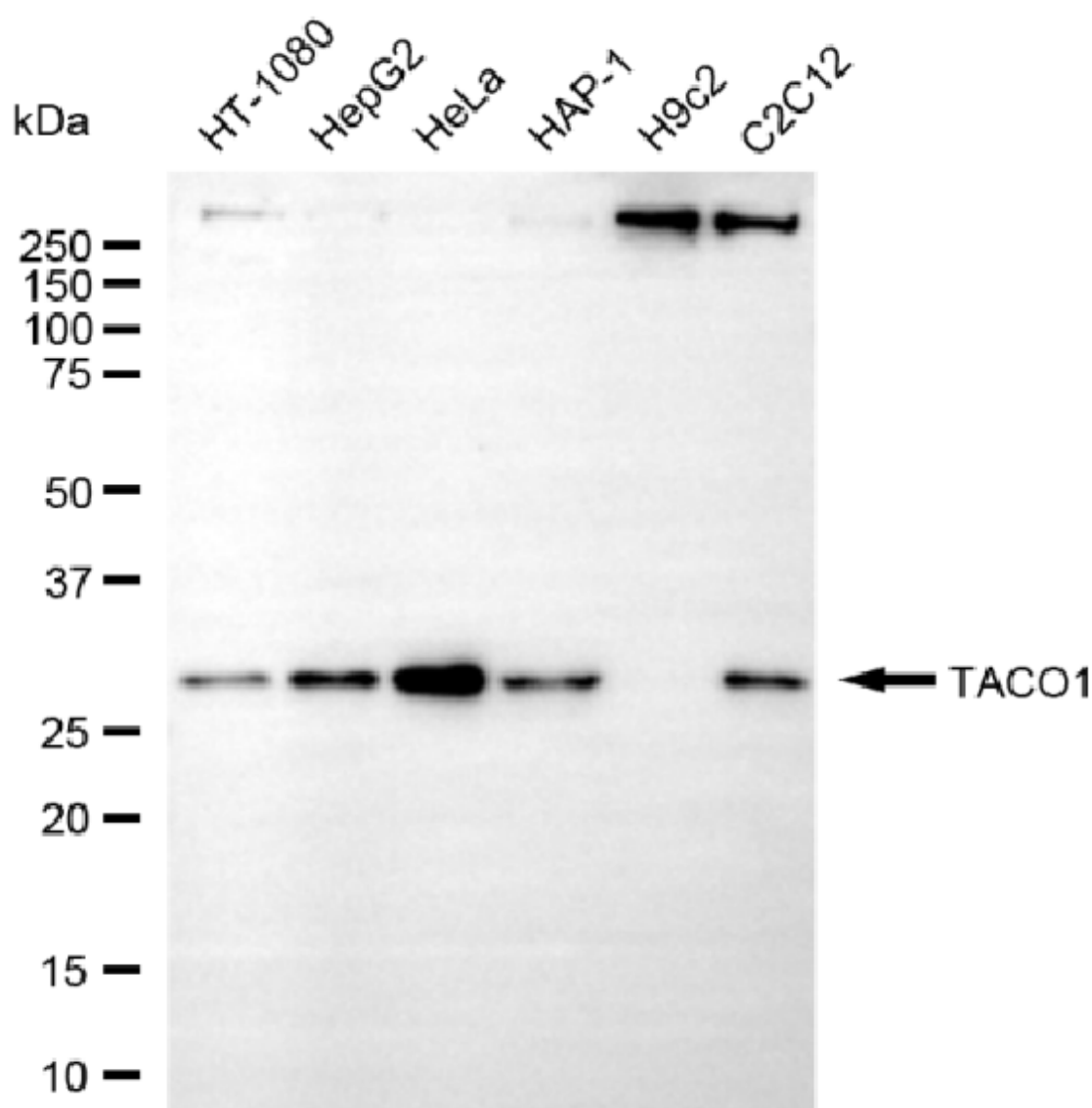
## Validation Data



Flow cytometric analysis of TACO1 expression in HeLa cells using anti-TACO1 antibody (Cat#5154, 1:2,000) . Green, isotype control; red, TACO1.



Immunocytochemical staining of HeLa cells with anti-TACO1 protein antibody (Cat#5154, 1:1,000) . Nuclei were stained blue with DAPI; TACO1 was stained magenta with Alexa Fluor® 647. Images were taken using Leica stellaris 5. Protein abundance based on laser Intensity and smart gain: Medium. Scale bar, 20  $\mu$ m.



Copyright ©2025 Genuin Biotechnologies LLC

Western blotting analysis using anti-TACO1 antibody (Cat#5154). Total cell lysates (30  $\mu$ g) from various cell lines were loaded and separated by SDS-PAGE. The blot was incubated with anti-TACO1 antibody (Cat#5154, 1:2,000) and HRP-conjugated goat anti-mouse secondary antibody (Cat#101, 1:20,000) respectively. Image was developed using NaQ™ ECL Substrate Kit (Cat#716).

**SUPPORT**

SUPPORT@GENUINBIOTECH.COM  
TEL: +1-540-855-7041

**ORDERS**

SALES@GENUINBIOTECH.COM  
FAX: +1-540-855-7041

**WWW.GENUINBIOTECH.COM**