

Catalog #: 51616

Aliases

SLC25A9; Mitochondrial uncoupling protein 3; UCP 3; Solute carrier family 25 member 9

Background

Gene Name: UCP3

NCBI Gene Entry: [7352](#)

UniProt Entry: [P55916](#)

Application Information

Molecular Weight: Predicted, 34 kDa; observed, 35 kDa

Clonality: Rabbit polyclonal antibody

Species Reactivity: Human, mouse, rat, dog, pig

Applications Tested: Western blotting (WB)

Immunogen

A synthesized peptide derived from human UCP3

Isotype

Rabbit IgG

Storage Buffer

Supplied in PBS (pH 7.3) containing 30% glycerol, and 0.01% sodium azide.

Storage

Store at -20 °C for one year.

Recommended Dilutions

Western Blotting (WB): 1:500-1:1,000

Note: This product is for research use only.

Validation Data

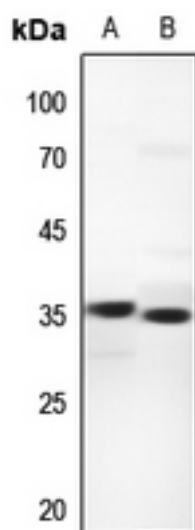
SUPPORT

SUPPORT@GENUINBIOTECH.COM
TEL: +1-540-855-7041

ORDERS

SALES@GENUINBIOTECH.COM
FAX: +1-540-855-7041

WWW.GENUINBIOTECH.COM



Western blotting analysis of UCP3 expression in mouse muscle (A), rat kidney (B) whole cell lysates.