

## Catalog #: 5165

### Aliases

KIFBP; Kinesin Family Binding Protein; KIAA1279; KBP; KIF1BP; TTC20; Kinesin Binding Protein; KIF1 Binding Protein; KIF-Binding Protein; DKFZP586B0923; Mutant KIF1 Binding Protein; KIF1-Binding Protein

### Background

Gene Name: KIFBP

NCBI Gene Entry: [26128](#)

UniProt Entry: [Q96EK5](#)

### Application Information

Molecular Weight: Predicted, 72 kDa; observed, 74 kDa

Clonality: Mouse oligoclonal antibody

Species Reactivity: Human, mouse, rat

Applications Tested: Western blotting (WB), flow cytometry (FCM), immunocytochemistry (IC)

### Immunogen

Recombinant protein of human KIFBP

### Isotype

Mouse IgG

### Storage Buffer

Supplied in PBS (pH 7.4) containing 50% glycerol, and 0.02% sodium azide.

### Storage

Store at -20 °C for one year.

### Recommended Dilutions

Western Blotting (WB): 1:500-1:2,500

Flow Cytometry (FCM): 1:2,000

Immunocytochemistry (IC): 1:100-1:1,000

**Note:** This product is for research use only.

### Validation Data

---

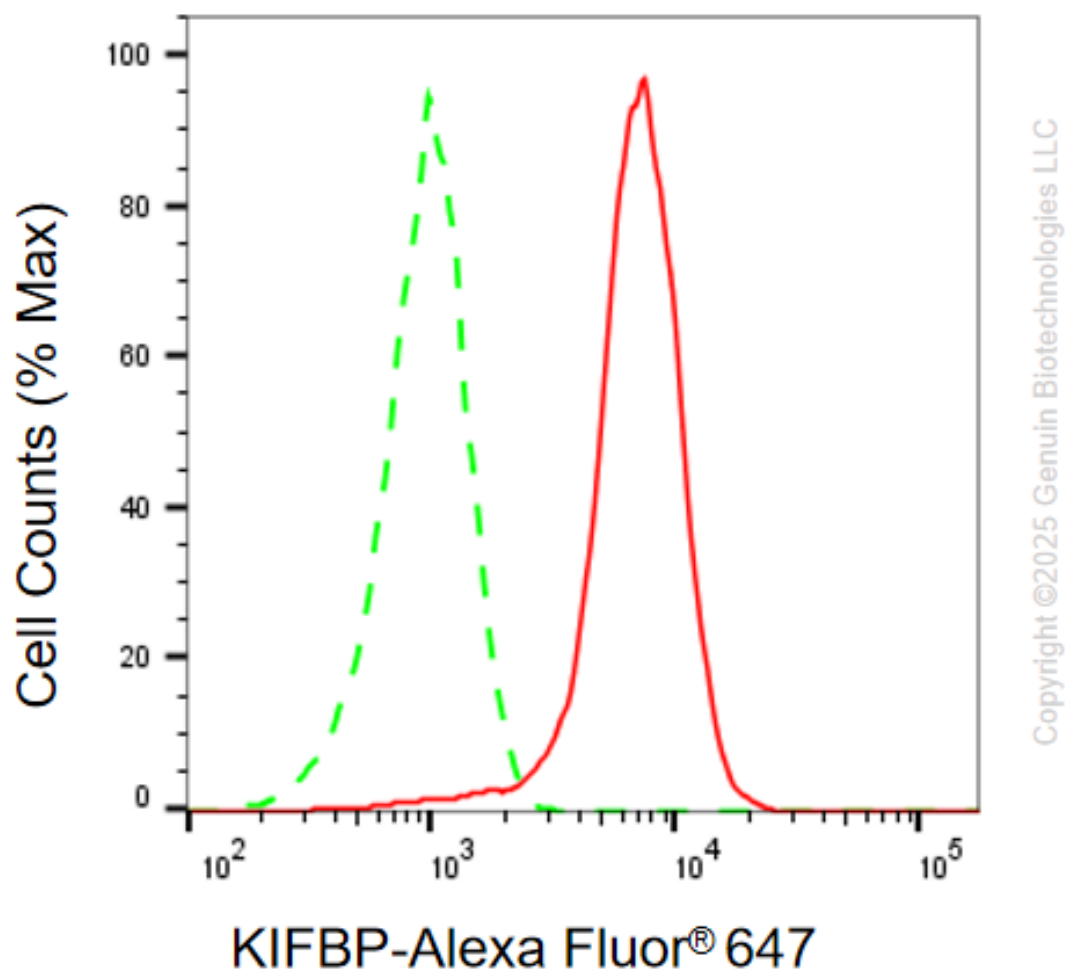
#### SUPPORT

SUPPORT@GENUINBIOTECH.COM  
TEL: +1-540-855-7041

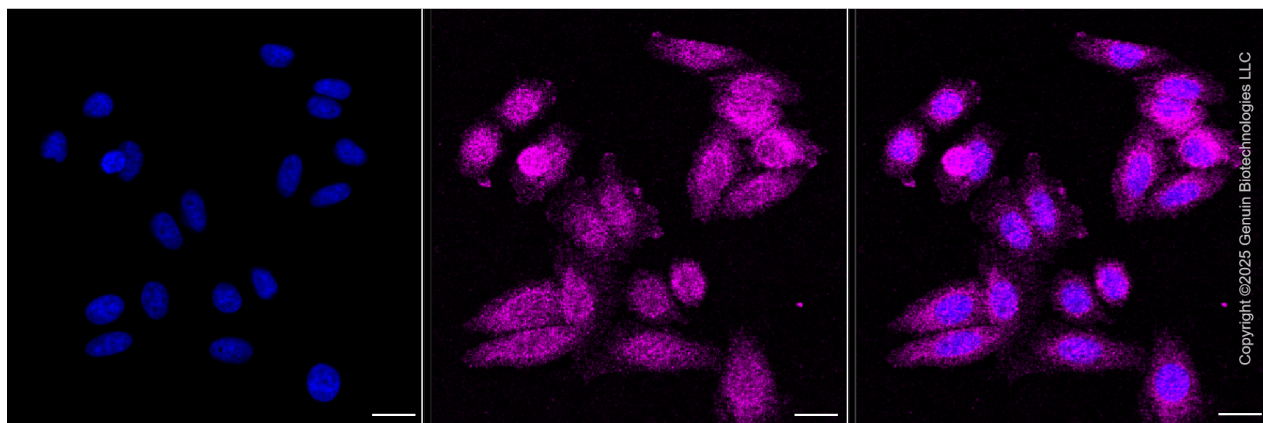
#### ORDERS

SALES@GENUINBIOTECH.COM  
FAX: +1-540-855-7041

[WWW.GENUINBIOTECH.COM](http://WWW.GENUINBIOTECH.COM)



Flow cytometric analysis of KIFBP expression in HepG2 cells using anti-KIFBP antibody (Cat#5165, 1:2,000) . Green, isotype control; red, KIFBP.



Immunocytochemical staining of HepG2 cells with anti-KIFBP antibody (Cat#5165, 1:1,000) .

**SUPPORT**

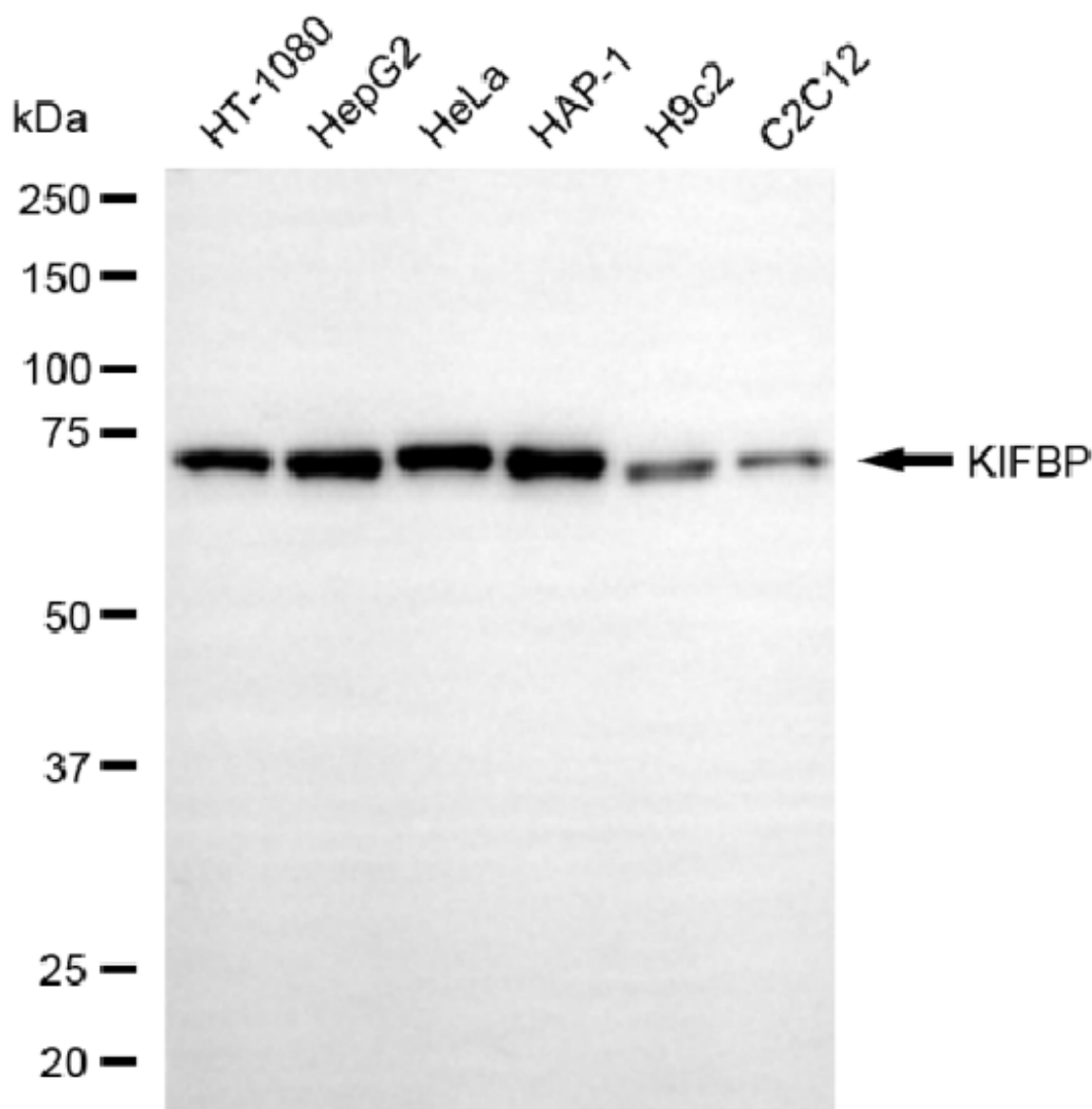
SUPPORT@GENUINBIOTECH.COM  
TEL: +1-540-855-7041

**ORDERS**

SALES@GENUINBIOTECH.COM  
FAX: +1-540-855-7041

[WWW.GENUINBIOTECH.COM](http://WWW.GENUINBIOTECH.COM)

Nuclei were stained blue with DAPI; KIFBP was stained magenta with Alexa Fluor® 647. Images were taken using Leica stellaris 5. Protein abundance based on laser Intensity and smart gain: Low. Scale bar, 20 µm.



Copyright ©2025 Genuin Biotechnologies LLC

Western blotting analysis using anti-KIFBP antibody (Cat#5165). Total cell lysates (30 µg) from various cell lines were loaded and separated by SDS-PAGE. The blot was incubated with anti-KIFBP antibody (Cat#5165, 1:2,500) and HRP-conjugated goat anti-mouse secondary antibody (Cat#101, 1:20,000) respectively. Image was developed using NaQ™ ECL Substrate Kit (Cat#716).