

Catalog #: 5168

Aliases

PTPN6; Protein Tyrosine Phosphatase Non-Receptor Type 6; PTP-1C; HCP; SHP-1; HCPH; SHP1; Tyrosine-Protein Phosphatase Non-Receptor Type 6; Hematopoietic Cell Protein-Tyrosine Phosphatase; Protein-Tyrosine Phosphatase SHP-1; Protein-Tyrosine Phosphatase 1C; EC 3.1.3.48; SH-PTP1; Hematopoietic Cell Phosphatase; HPTP1C; SHP-1L; PTP1C

Background

Gene Name: PTPN6

NCBI Gene Entry: [5777](#)

UniProt Entry: [P29350](#)

Application Information

Molecular Weight: Predicted, 68 kDa; observed, 63 kDa

Clonality: Mouse oligoclonal antibody

Species Reactivity: Human

Applications Tested: Western blotting (WB), flow cytometry (FCM)

Immunogen

Recombinant protein of human PTPN6

Isotype

Mouse IgG

Storage Buffer

Supplied in PBS (pH 7.4) containing 50% glycerol, and 0.02% sodium azide.

Storage

Store at -20 °C for one year.

Recommended Dilutions

Western Blotting (WB): 1:500-1:2,500

Note: This product is for research use only.

Validation Data

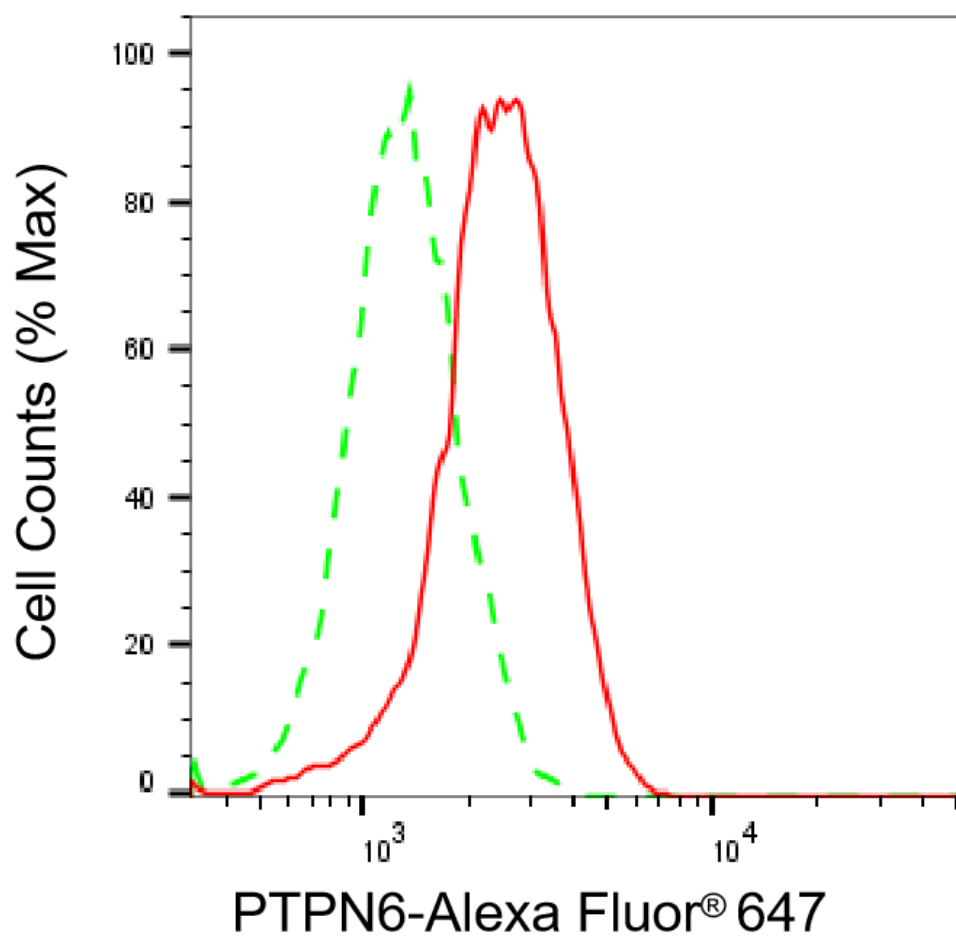
SUPPORT

SUPPORT@GENUINBIOTECH.COM
TEL: +1-540-855-7041

ORDERS

SALES@GENUINBIOTECH.COM
FAX: +1-540-855-7041

WWW.GENUINBIOTECH.COM



Copyright ©2025 Genuin Biotechnologies LLC

Flow cytometric analysis of PTPN6 expression in A549 cells using anti-PTPN6 antibody (Cat#5168, 1:2,000). Green, isotype control; red, PTPN6.

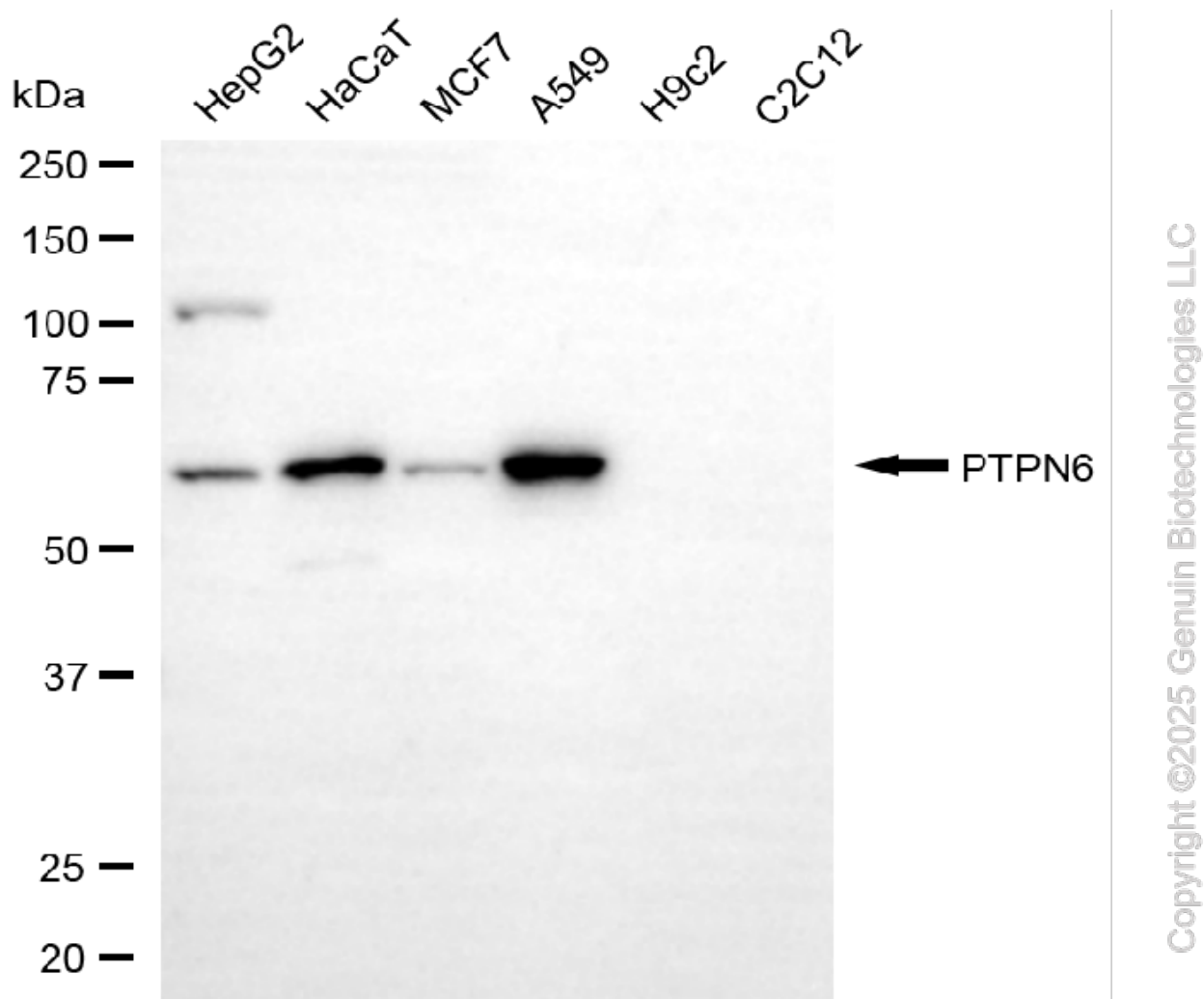
SUPPORT

SUPPORT@GENUINBIOTECH.COM
TEL: +1-540-855-7041

ORDERS

SALES@GENUINBIOTECH.COM
FAX: +1-540-855-7041

WWW.GENUINBIOTECH.COM



Western blotting analysis using anti-PTPN6 antibody (Cat#5168). Total cell lysates (30 μ g) from various cell lines were loaded and separated by SDS-PAGE. The blot was incubated with anti-PTPN6 antibody (Cat#5168, 1:2,500) and HRP-conjugated goat anti-mouse secondary antibody (Cat#101, 1:20,000) respectively. Image was developed using FeQ™ ECL Substrate Kit (Cat#226).

SUPPORT

SUPPORT@GENUINBIOTECH.COM
TEL: +1-540-855-7041

ORDERS

SALES@GENUINBIOTECH.COM
FAX: +1-540-855-7041

WWW.GENUINBIOTECH.COM