

## Catalog #: 51730

## Aliases

STK14A; Ribosomal protein S6 kinase beta-1; S6K-beta-1; S6K1; 70 kDa ribosomal protein S6 kinase 1; P70S6K1; p70-S6K 1; Ribosomal protein S6 kinase I; Serine/threonine-protein kinase 14A; p70 ribosomal S6 kinase alpha; p70 S6 kinase alpha; p70 S6K-alpha; p70 S6KA

## Background

Gene Name: RPS6KB1

NCBI Gene Entry: [6198](#)

UniProt Entry: [P23443](#)

## Application Information

Molecular Weight: Predicted, 59 kDa; observed, 70 kDa

Clonality: Rabbit polyclonal antibody

Species Reactivity: Human, mouse, rat, bovine, rabbit

Applications Tested: Western blotting (WB), immunohistochemistry (IHC), immunocytochemistry (IC)

## Immunogen

A synthesized peptide derived from human S6K1

## Isotype

Rabbit IgG

## Storage Buffer

Supplied in PBS (pH 7.3) containing 30% glycerol, and 0.01% sodium azide.

## Storage

Store at -20 °C for one year.

## Recommended Dilutions

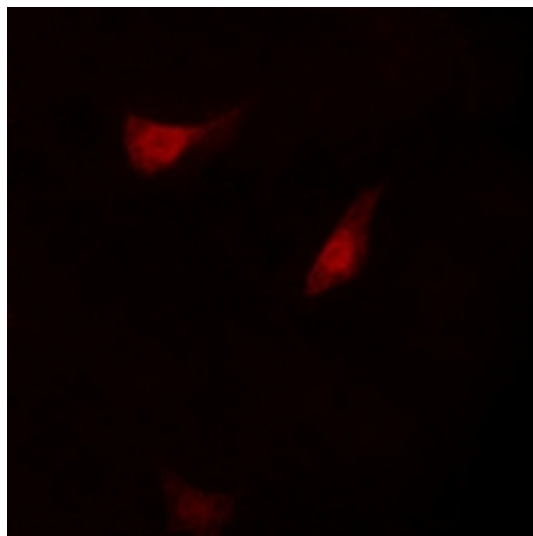
Western Blotting (WB): 1:500-1:1,000

Immunohistochemistry (IHC): 1:100-1:200

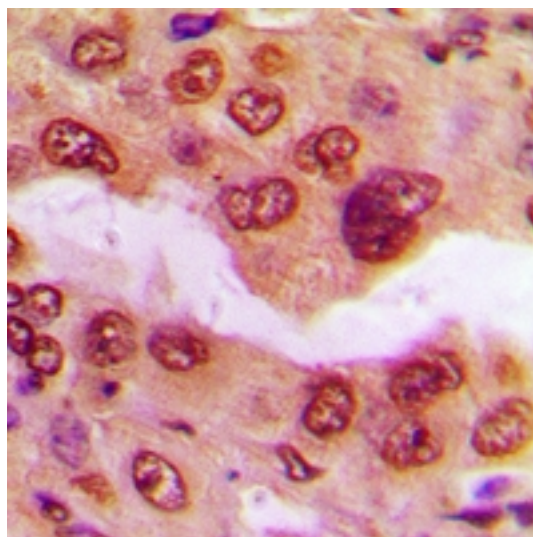
Immunocytochemistry (IC): 1:100-1:500

**Note:** This product is for research use only.

## Validation Data



Immunocytochemical analysis of S6K1 staining in HepG2 cells. Formalin-fixed cells were permeabilized with 0.1% Triton X-100 in TBS for 5-10 minutes and blocked with 3% BSA-PBS for 30 minutes at room temperature. Cells were probed with the primary antibody in 3% BSA-PBS and incubated overnight at 4 °C in a humidified chamber. Cells were washed with PBST and incubated with a DyLight 594-conjugated secondary antibody (red) in PBS at room temperature in the dark.



Immunohistochemical analysis of S6K1 staining in human lung cancer formalin fixed paraffin embedded tissue section. The section was pre-treated using heat mediated antigen retrieval with sodium citrate buffer (pH 6.0). The section was then incubated with the antibody at room temperature and detected using an HRP conjugated compact polymer system. DAB was used as the chromogen. The section was then counterstained with haematoxylin and mounted with DPX.

---

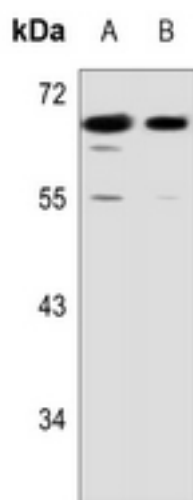
### SUPPORT

SUPPORT@GENUINBIOTECH.COM  
TEL: +1-540-855-7041

### ORDERS

SALES@GENUINBIOTECH.COM  
FAX: +1-540-855-7041

[WWW.GENUINBIOTECH.COM](http://WWW.GENUINBIOTECH.COM)



Western blotting analysis of S6K1 expression in HeLa (A), MCF7 (B) whole cell lysates.