

Catalog #: 5174

Aliases

TBL2; Transducin Beta Like 2; WS-BetaTRP; WBSCR13; Williams-Beuren Syndrome Chromosome Region 13; WS Beta-Transducin Repeats Protein; Transducin Beta-Like Protein 2; DKFZP43N024; Williams-Beuren Syndrome Chromosomal Region 13 Protein; Epididymis Secretory Sperm Binding Protein; Transducin (Beta)-Like 2; Transducin -Like 2

Background

Gene Name: TBL2

NCBI Gene Entry: [26608](#)

UniProt Entry: [Q9Y4P3](#)

Application Information

Molecular Weight: Predicted, 50 kDa, observed, 48 kDa

Clonality: Rabbit polyclonal antibody

Species Reactivity: Human, mouse, rat

Applications Tested: Western blotting (WB)

Immunogen

A synthesized peptide derived from human TBL2

Isotype

Rabbit IgG

Storage Buffer

Supplied in PBS (pH 7.4) containing 50% glycerol, and 0.02% sodium azide.

Storage

Store at -20 °C for one year.

Recommended Dilutions

Western Blotting (WB): 1:500-1:2,500

Note: This product is for research use only.

Validation Data

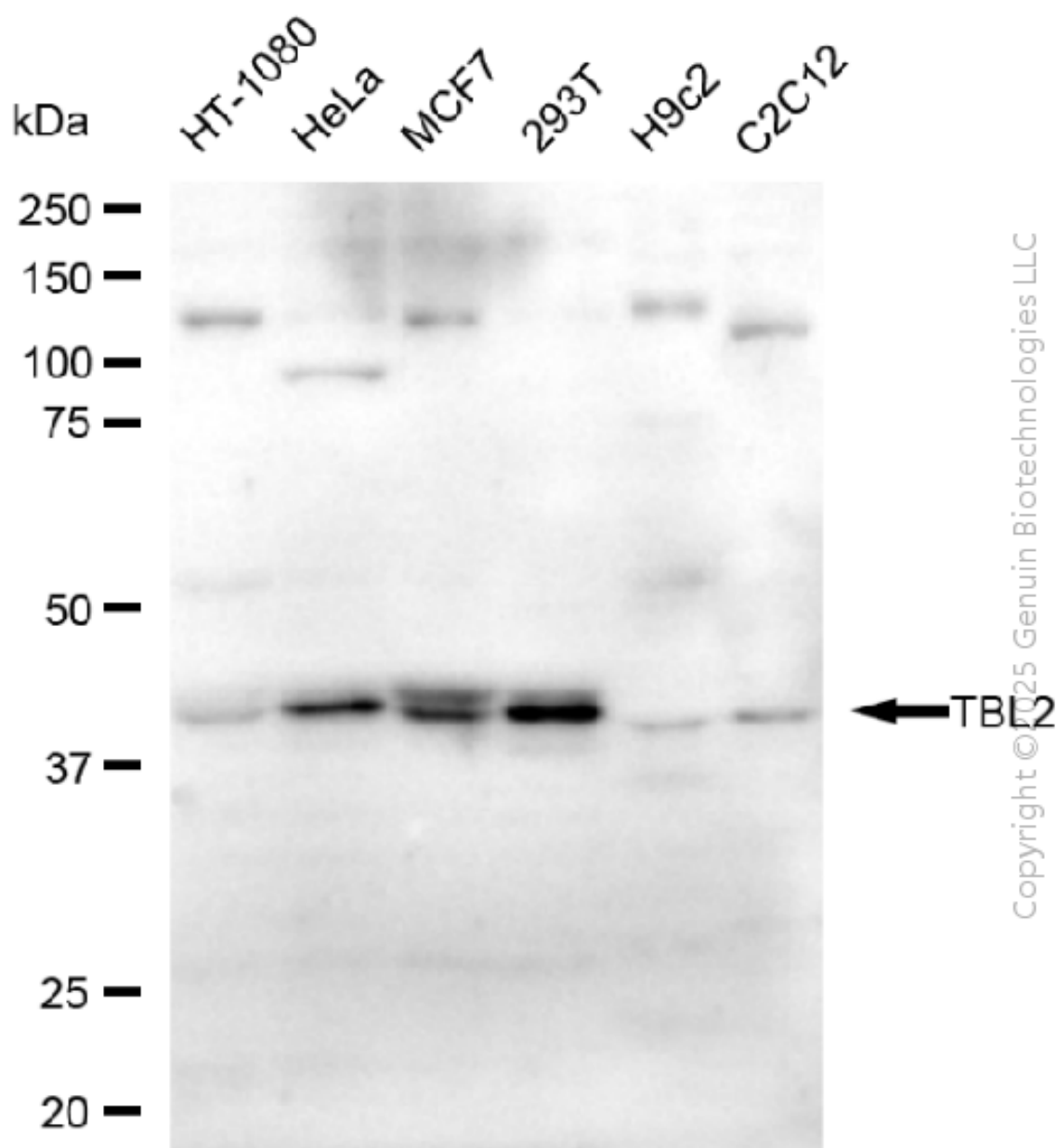
SUPPORT

SUPPORT@GENUINBIOTECH.COM
TEL: +1-540-855-7041

ORDERS

SALES@GENUINBIOTECH.COM
FAX: +1-540-855-7041

WWW.GENUINBIOTECH.COM



Western blotting analysis using anti-TBL2 antibody (Cat#5174). Total cell lysates (30 μ g) from various cell lines were loaded and separated by SDS-PAGE. The blot was incubated with anti-TBL2 antibody (Cat#5174, 1:2,500) and HRP-conjugated goat anti-rabbit secondary antibody (Cat#201, 1:20,000) respectively. Image was developed using FeQ™ ECL Substrate Kit (Cat#226).

SUPPORT

SUPPORT@GENUINBIOTECH.COM
TEL: +1-540-855-7041

ORDERS

SALES@GENUINBIOTECH.COM
FAX: +1-540-855-7041

WWW.GENUINBIOTECH.COM