

Catalog #: 5177

Aliases

ACTB; Actin Beta; Actin, Cytoplasmic 1; PS1TP5-Binding Protein 1; Beta Cytoskeletal Actin; I(2)-Actin; Beta-Actin; EC 3.6.4.-; PS1TP5BP1; B-Actin; BKRNS; BRWS1; CSMH; DDS1; THC8; BNS

Background

Gene Name: ACTB

NCBI Gene Entry: [60](#)

UniProt Entry: [P60709](#)

Application Information

Molecular Weight: Predicted, 23 kDa; observed, 23 kDa

Clonality: Rabbit monoclonal antibody

Species Reactivity: Human, mouse, rat

Applications Tested: Western blotting (WB), flow cytometry (FCM)

Immunogen

A synthesized peptide derived from human beta-Actin

Isotype

Mouse IgG2b

Storage Buffer

Supplied in PBS (pH 7.4) containing 50% glycerol, and 0.05% Proclin 300.

Storage

Store at -20 °C for one year.

Recommended Dilutions

Western Blotting (WB): 1:4,000-1:20,000

Note: This product is for research use only.

Validation Data

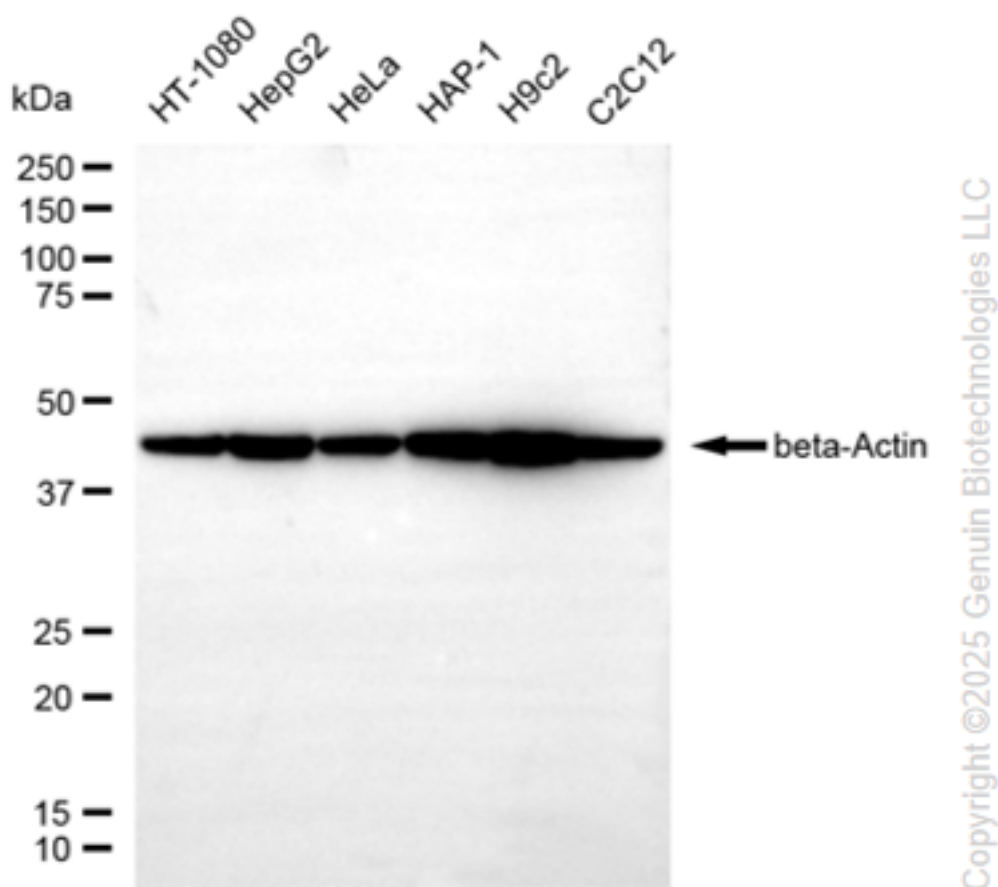
SUPPORT

SUPPORT@GENUINBIOTECH.COM
TEL: +1-540-855-7041

ORDERS

SALES@GENUINBIOTECH.COM
FAX: +1-540-855-7041

WWW.GENUINBIOTECH.COM



Western blotting analysis using anti-beta-actin antibody (Cat#5177). Total cell lysates (30 μ g) from various cell lines were loaded and separated by SDS-PAGE. The blot was incubated with anti-beta-actin antibody (Cat#5177, 1:20,000) and HRP-conjugated goat anti-mouse secondary antibody (Cat#101, 1:20,000) respectively. Image was developed using FeQ™ ECL Substrate Kit (Cat#226).