

## Catalog #: 51805

## Aliases

Serine/threonine-protein phosphatase 4 regulatory subunit 2

## Background

Gene Name: PPP4R2

NCBI Gene Entry: [151987](#)

UniProt Entry: [Q9NY27](#)

## Application Information

Molecular Weight: Predicted, 46 kDa; observed, 55 kDa

Clonality: Rabbit polyclonal antibody

Species Reactivity: Human, mouse, monkey

Applications Tested: Western blotting (WB), immunohistochemistry (IHC)

## Immunogen

A synthesized peptide derived from human PPP4R2

## Isotype

Rabbit IgG

## Storage Buffer

Supplied in PBS (pH 7.3) containing 30% glycerol, and 0.01% sodium azide.

## Storage

Store at -20 °C for one year.

## Recommended Dilutions

Western Blotting (WB): 1:500-1:1,000

Immunohistochemistry (IHC): 1:50-1:100

**Note:** This product is for research use only.

## Validation Data

---

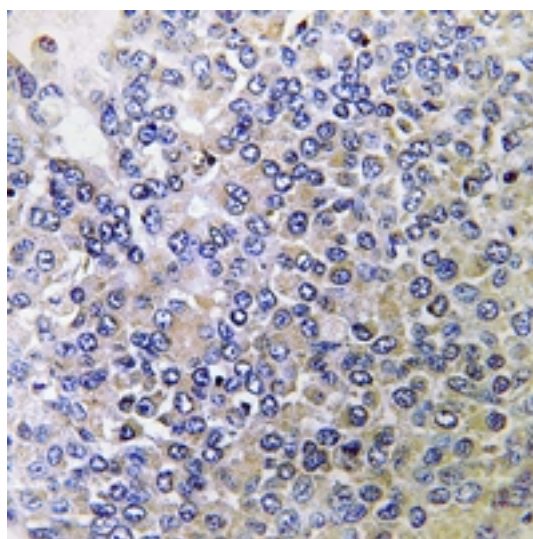
### SUPPORT

SUPPORT@GENUINBIOTECH.COM  
TEL: +1-540-855-7041

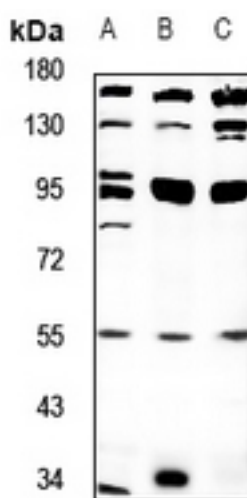
### ORDERS

SALES@GENUINBIOTECH.COM  
FAX: +1-540-855-7041

[WWW.GENUINBIOTECH.COM](http://WWW.GENUINBIOTECH.COM)



Immunohistochemical analysis of PPP4R2 staining in human breast cancer formalin fixed paraffin embedded tissue section. The section was pre-treated using heat mediated antigen retrieval with sodium citrate buffer (pH 6.0). The section was then incubated with the antibody at room temperature and detected using an HRP conjugated compact polymer system. DAB was used as the chromogen. The section was then counterstained with haematoxylin and mounted with DPX.



Western blotting analysis of PPP4R2 expression in CT26 (A), P12 (B), HeLa (C) whole cell lysates.