

Catalog #: 51826

Aliases

Lysosome-associated membrane glycoprotein 2; LAMP-2; Lysosome-associated membrane protein 2; CD107 antigen-like family member B; CD107b

Background

Gene Name: LAMP2

NCBI Gene Entry: [3920](#)

UniProt Entry: [P13473](#)

Application Information

Molecular Weight: Predicted, 44 kDa; observed, 100,44 kDa

Clonality: Rabbit polyclonal antibody

Species Reactivity: Human, mouse, rat

Applications Tested: Western blotting (WB)

Immunogen

A synthesized peptide derived from human CD107b

Isotype

Rabbit IgG

Storage Buffer

Supplied in PBS (pH 7.3) containing 30% glycerol, and 0.01% sodium azide.

Storage

Store at -20 °C for one year.

Recommended Dilutions

Western Blotting (WB): 1:500-1:2,000

Note: This product is for research use only.

Validation Data

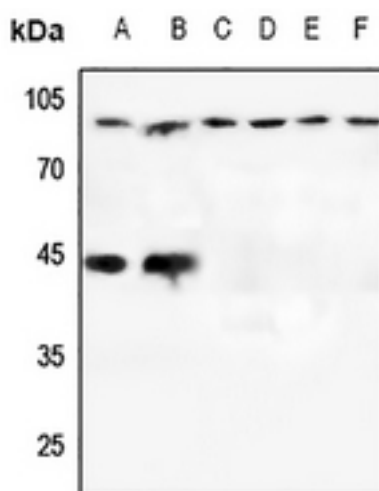
SUPPORT

SUPPORT@GENUINBIOTECH.COM
TEL: +1-540-855-7041

ORDERS

SALES@GENUINBIOTECH.COM
FAX: +1-540-855-7041

WWW.GENUINBIOTECH.COM



Western blotting analysis of CD107b expression in A375 (A), DLD (B), mouse lung (C), mouse liver (D), rat lung (E), rat liver (F) whole cell lysates.