

# Anti-MEF2A (Acetyl-K403) Rabbit Polyclonal Antibody



**Catalog #: 51845**

## Aliases

MEF2; Myocyte-specific enhancer factor 2A; Serum response factor-like protein 1

## Background

Gene Name: MEF2A

NCBI Gene Entry: [4205](#)

UniProt Entry: [Q02078](#)

## Application Information

Molecular Weight: Predicted, 54 kDa; observed, 53 kDa

Clonality: Rabbit polyclonal antibody

Species Reactivity: Human, mouse, rat

Applications Tested: Western blotting (WB)

## Immunogen

A synthesized peptide derived from human MEF2A protein

## Isotype

Rabbit IgG

## Storage Buffer

Supplied in PBS (pH 7.3) containing 30% glycerol, and 0.01% sodium azide.

## Storage

Store at -20 °C for one year.

## Recommended Dilutions

Western Blotting (WB): 1:500-1:2,000

**Note:** This product is for research use only.

## Validation Data

---

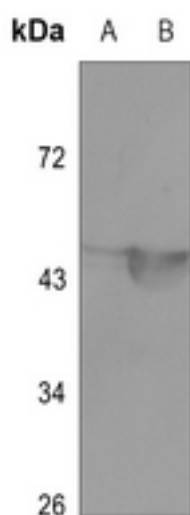
### SUPPORT

SUPPORT@GENUINBIOTECH.COM  
TEL: +1-540-855-7041

### ORDERS

SALES@GENUINBIOTECH.COM  
FAX: +1-540-855-7041

[WWW.GENUINBIOTECH.COM](http://WWW.GENUINBIOTECH.COM)



Western blotting analysis of MEF2A (Acetyl-K403) expression in mouse brain (A), mouse muscle (B) whole cell lysates.