

Catalog #: 51856

Aliases

Interleukin-6 receptor subunit alpha; IL-6 receptor subunit alpha; IL-6R subunit alpha; IL-6R-alpha; IL-6RA; IL-6R 1; Membrane glycoprotein 80; gp80; CD126

Background

Gene Name: IL6R

NCBI Gene Entry: [3570](#)

UniProt Entry: [P08887](#)

Application Information

Molecular Weight: Predicted, 51 kDa; observed, 53 kDa

Clonality: Rabbit polyclonal antibody

Species Reactivity: Human, mouse, rat

Applications Tested: Western blotting (WB), immunohistochemistry (IHC)

Immunogen

A synthesized peptide derived from human CD126

Isotype

Rabbit IgG

Storage Buffer

Supplied in PBS (pH 7.3) containing 30% glycerol, and 0.01% sodium azide.

Storage

Store at -20 °C for one year.

Recommended Dilutions

Western Blotting (WB): 1:500-1:1,000

Immunohistochemistry (IHC): 1:50-1:100

Note: This product is for research use only.

Validation Data

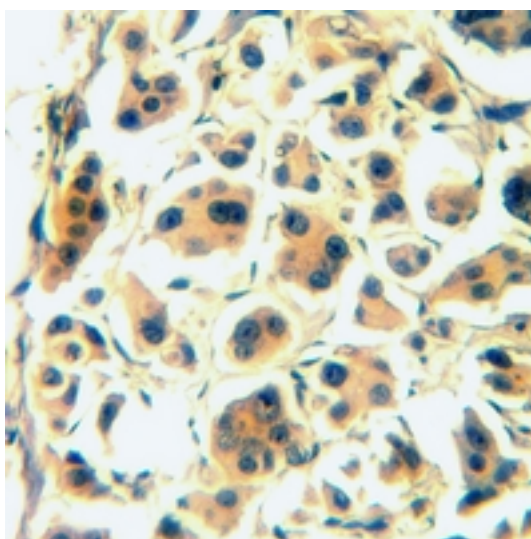
SUPPORT

SUPPORT@GENUINBIOTECH.COM
TEL: +1-540-855-7041

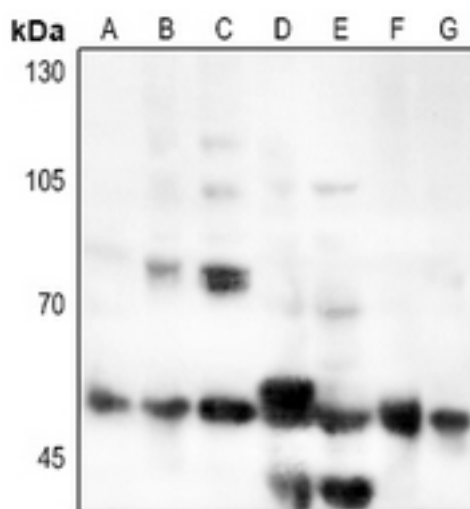
ORDERS

SALES@GENUINBIOTECH.COM
FAX: +1-540-855-7041

WWW.GENUINBIOTECH.COM



Immunohistochemical analysis of CD126 staining in human breast cancer formalin fixed paraffin embedded tissue section. The section was pre-treated using heat mediated antigen retrieval with sodium citrate buffer (pH 6.0). The section was then incubated with the antibody at room temperature and detected using an HRP conjugated compact polymer system. DAB was used as the chromogen. The section was then counterstained with haematoxylin and mounted with DPX.



Western blotting analysis of CD126 expression in HEK293T (A), Hela (B), HGC27 (C), mouse liver (D), mouse lung (E), rat liver (F), rat lung (G) whole cell lysates.