

HRP-Conjugated Anti-GAPDH Recombinant Rabbit Monoclonal Antibody



Catalog #: 5187-HRP

Aliases

GAPDH; Glyceraldehyde-3-Phosphate Dehydrogenase; GAPD; Peptidyl-Cysteine S-Nitrosylase GAPDH; EC 1.2.1.12; Epididymis Secretory Sperm Binding Protein Li 162eP; Oct1 Coactivator In S Phase, 38 Kd Component; Aging-Associated Gene 9 Protein; OCAS, P38 Component; HEL-S-162eP; EC 2.6.99.-; EC 1.2.1; G3PD

Background

Gene Name: GAPDH

NCBI Gene Entry: [2597](#)

UniProt Entry: [P04406](#)

Application Information

Molecular Weight: Predicted, 36 kDa; observed, 36 kDa

Clonality: Rabbit monoclonal antibody

Clone ID: 25GB10

Species Reactivity: Human, mouse, rat

Applications Tested: Western blotting (WB)

Conjugation: HRP

Immunogen

A synthesized peptide derived from human GAPDH

Isotype

Rabbit IgG

Storage Buffer

Supplied in PBS (pH 7.4) containing 50% glycerol, and 0.02% sodium azide.

Storage

Store at -20 °C for one year.

Recommended Dilutions

Western Blotting (WB): 1:4,000-1:20,000

Note: This product is for research use only.

SUPPORT

SUPPORT@GENUINBIOTECH.COM
TEL: +1-540-855-7041

ORDERS

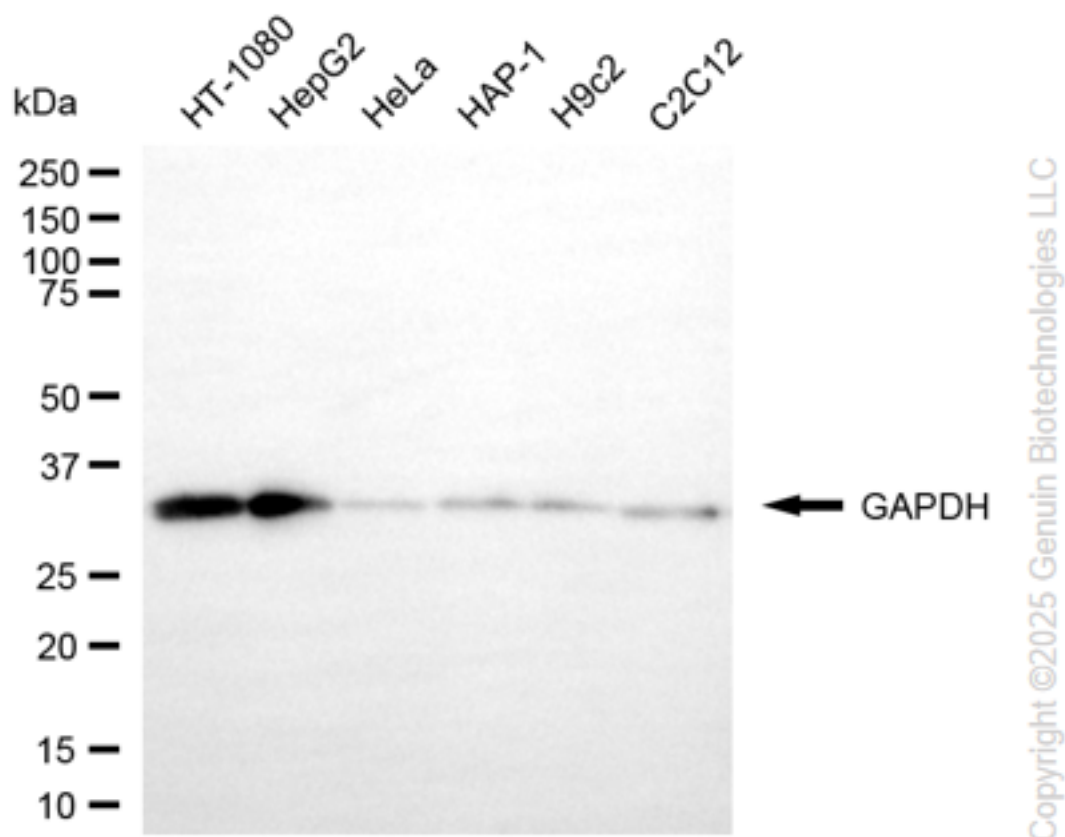
SALES@GENUINBIOTECH.COM
FAX: +1-540-855-7041

WWW.GENUINBIOTECH.COM

HRP-Conjugated Anti-GAPDH Recombinant Rabbit Monoclonal Antibody

PAGE 2

Validation Data



Western blotting analysis using anti-GAPDH antibody (Cat#5187-HRP). Total cell lysates (30 μ g) from various cell lines were loaded and separated by SDS-PAGE. The blot was incubated with anti-GAPDH antibody (Cat#5187-HRP, 1:20,000). Image was developed using NaQ™ ECL Substrate Kit (Cat#716).

SUPPORT

SUPPORT@GENUINBIOTECH.COM
TEL: +1-540-855-7041

ORDERS

SALES@GENUINBIOTECH.COM
FAX: +1-540-855-7041

WWW.GENUINBIOTECH.COM