

## Catalog #: 5189

### Aliases

CCAR2; Cell Cycle And Apoptosis Regulator 2; KIAA1967; DBC-1; NET35; DBC1; Cell Division Cycle And Apoptosis Regulator Protein; Cell Cycle And Apoptosis Regulator Protein; Deleted In Breast Cancer 1; P30 DBC; Deleted In Breast Cancer Gene 1 Protein; DBIRD Complex Subunit KIAA1967; P30DBC; DBC.1

### Background

Gene Name: CCAR2

NCBI Gene Entry: [57805](#)

UniProt Entry: [Q8N163](#)

### Application Information

Molecular Weight: Predicted, 103 kDa; observed, 130 kDa

Clonality: Mouse monoclonal antibody

Clone ID: 25GB70

Species Reactivity: Human, mouse, rat

Applications Tested: Western blotting (WB), flow cytometry (FCM), immunocytochemistry (IC)

### Immunogen

Recombinant protein of human DBC1

### Isotype

Mouse IgG1

### Storage Buffer

Supplied in PBS (pH 7.4) containing 50% glycerol, and 0.02% sodium azide.

### Storage

Store at -20 °C for one year.

### Recommended Dilutions

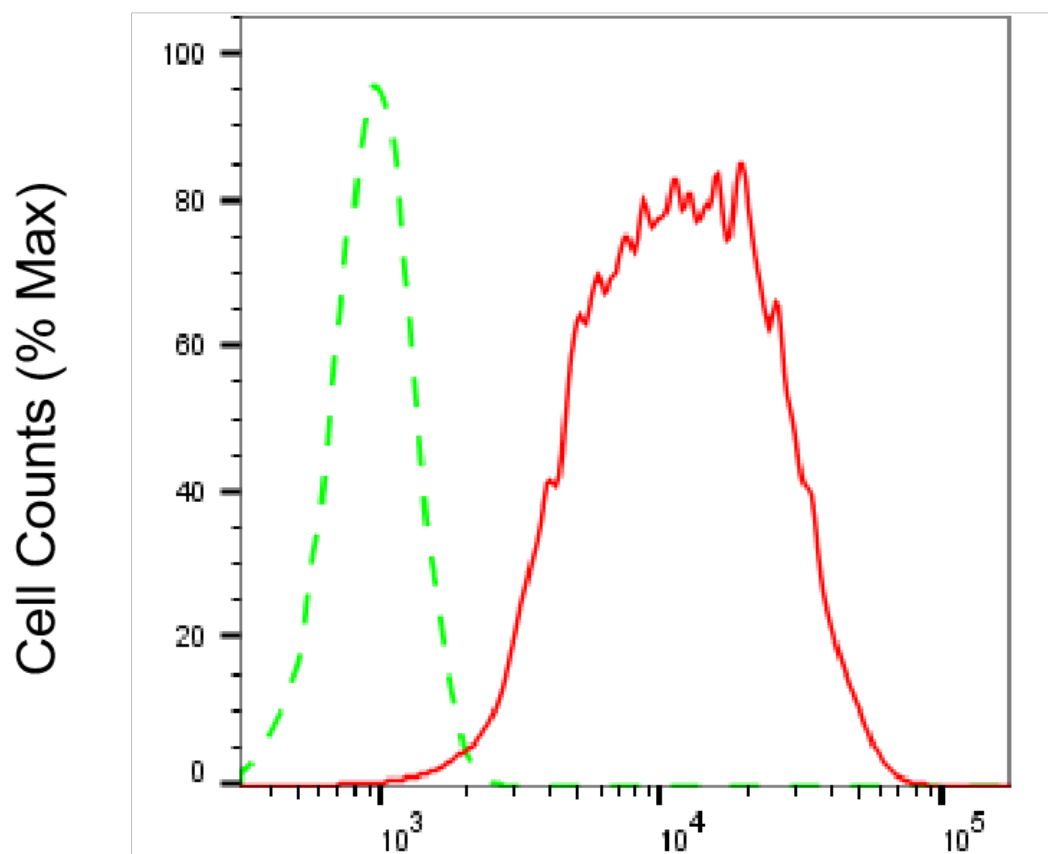
Western Blotting (WB): 1:1,000-1:5,000

Flow Cytometry (FCM): 1:1,000

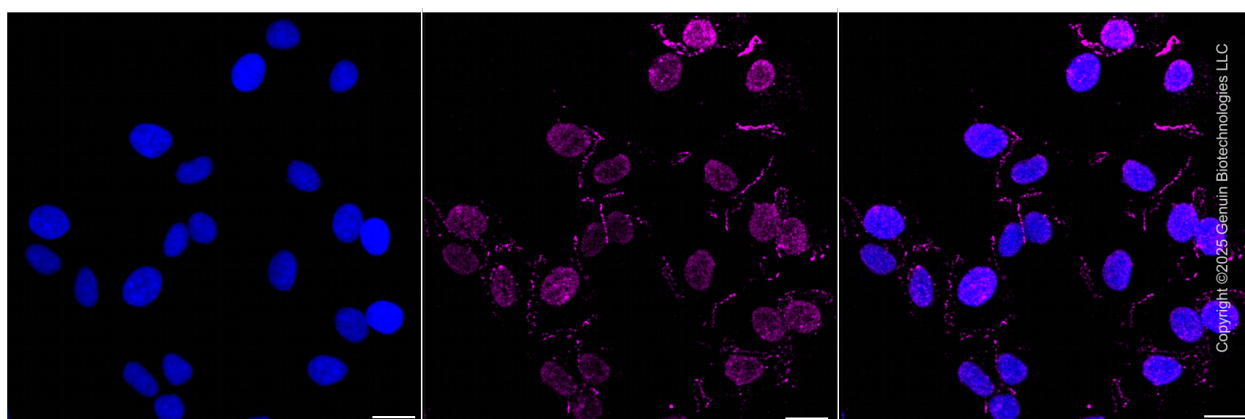
Immunocytochemistry (IC): 1:100-1:1,000

**Note:** This product is for research use only.

## Validation Data



Flow cytometric analysis of CCAR2 expression in HT-1080 cells using anti-CCAR2 antibody (Cat#5189, 1:2,000). Green, isotype control; red, CCAR2.



### SUPPORT

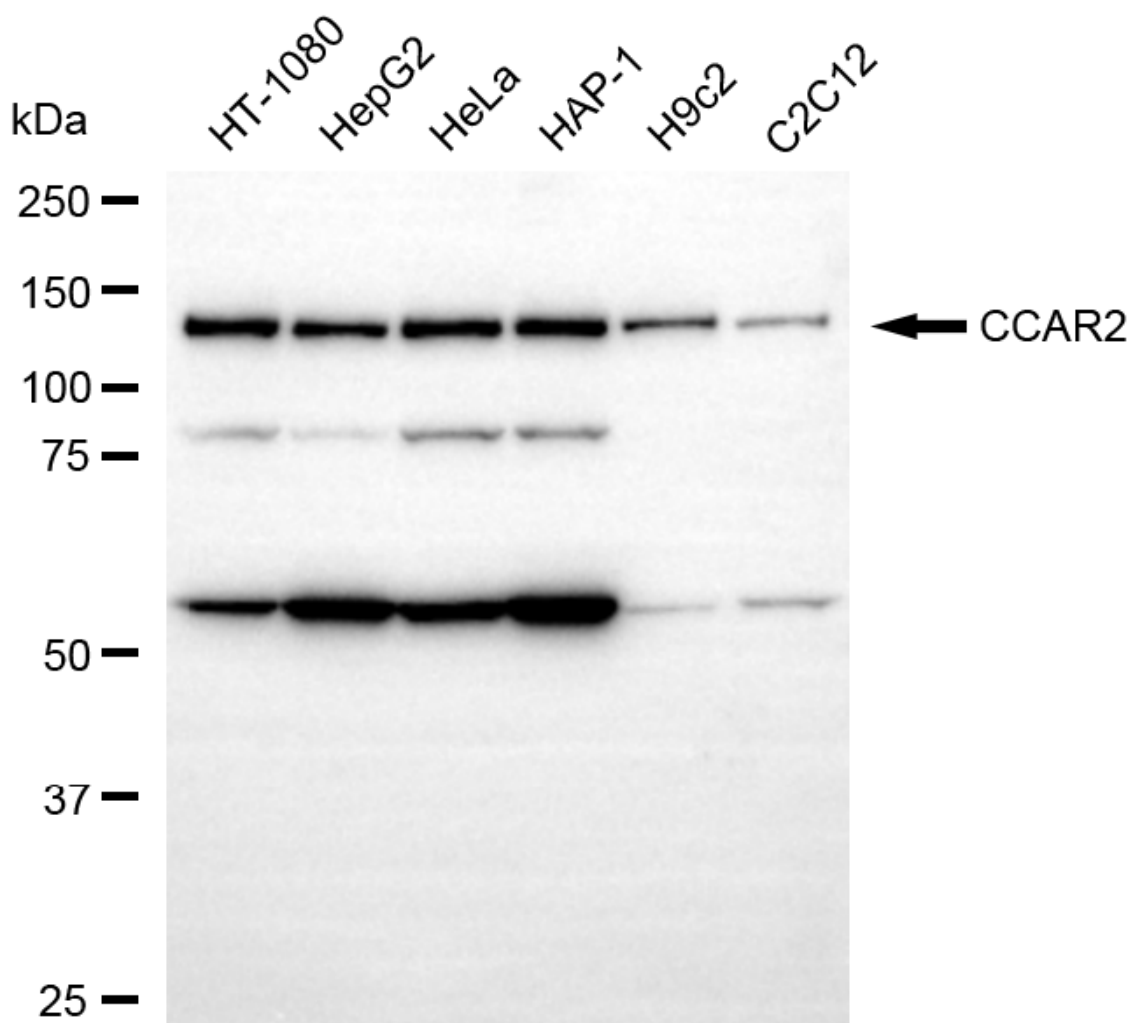
SUPPORT@GENUINBIOTECH.COM  
TEL: +1-540-855-7041

### ORDERS

SALES@GENUINBIOTECH.COM  
FAX: +1-540-855-7041

WWW.GENUINBIOTECH.COM

Immunocytochemical staining of HT-1080 cells with anti-CCAR2 antibody (Cat#5189, 1:1,000) . Nuclei were stained blue with DAPI; CCAR2 was stained magenta with Alexa Fluor® 647. Images were taken using Leica stellaris 5. Protein abundance based on laser Intensity and smart gain:Medium . Scale bar, 20  $\mu$ m.



Western blotting analysis using anti-CCAR2 antibody (Cat#5189). Total cell lysates (30  $\mu$ g) from various cell lines were loaded and separated by SDS-PAGE. The blot was incubated with anti-CCAR2 antibody (Cat#5189, 1:5,000) and HRP-conjugated goat anti-mouse secondary antibody (Cat#101, 1:20,000) respectively. Image was developed using NaQ™ ECL Substrate Kit (Cat#716).