

Catalog #: 51946

Aliases

NR1F3; RORG; RZRG; Nuclear receptor ROR-gamma; Nuclear receptor RZR-gamma; Nuclear receptor subfamily 1 group F member 3; RAR-related orphan receptor C; Retinoid-related orphan receptor-gamma

Background

Gene Name: RORC

NCBI Gene Entry: [6097](#)

UniProt Entry: [P51449](#)

Application Information

Molecular Weight: Predicted, 58 kDa; observed, 45 kDa

Clonality: Rabbit polyclonal antibody

Species Reactivity: Human, mouse

Applications Tested: Western blotting (WB)

Immunogen

A synthesized peptide derived from human ROR gamma

Isotype

Rabbit IgG

Storage Buffer

Supplied in PBS (pH 7.3) containing 30% glycerol, and 0.01% sodium azide.

Storage

Store at -20 °C for one year.

Recommended Dilutions

Western Blotting (WB): 1:500-1:1,000

Note: This product is for research use only.

Validation Data

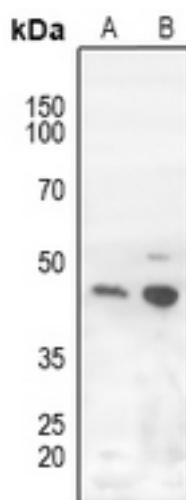
SUPPORT

SUPPORT@GENUINBIOTECH.COM
TEL: +1-540-855-7041

ORDERS

SALES@GENUINBIOTECH.COM
FAX: +1-540-855-7041

WWW.GENUINBIOTECH.COM



Western blotting analysis of ROR gamma expression in HEK293T (A), HeLa (B) whole cell lysates.