

Catalog #: 5199

Aliases

TUBB4A; Tubulin Beta 4A Class IVa; Beta-5; TUBB4; Dystonia 4, Torsion (Autosomal Dominant); Tubulin Beta-4A Chain; Tubulin Beta-4 Chain; Tubulin, Beta 4; DYT4; Tubulin, Beta 4 Class IVa; Class IVa Beta-Tubulin; Tubulin, Beta, 5; Tubulin 5 Beta; TUBB5

Background

Gene Name: TUBB4A

NCBI Gene Entry: [10382](#)

UniProt Entry: [P04350](#)

Application Information

Molecular Weight: Predicted, 50 kDa; observed, 50 kDa

Clonality: Rabbit monoclonal antibody

Clone ID: 25GB120

Species Reactivity: Human, mouse, rat

Applications Tested: Western blotting (WB), flow cytometry (FCM), immunocytochemistry (IC)

Immunogen

A synthesized peptide derived from human beta IV Tubulin

Isotype

Rabbit IgG

Storage Buffer

Supplied in PBS (pH 7.4) containing 50% glycerol, and 0.02% sodium azide.

Storage

Store at -20 °C for one year.

Recommended Dilutions

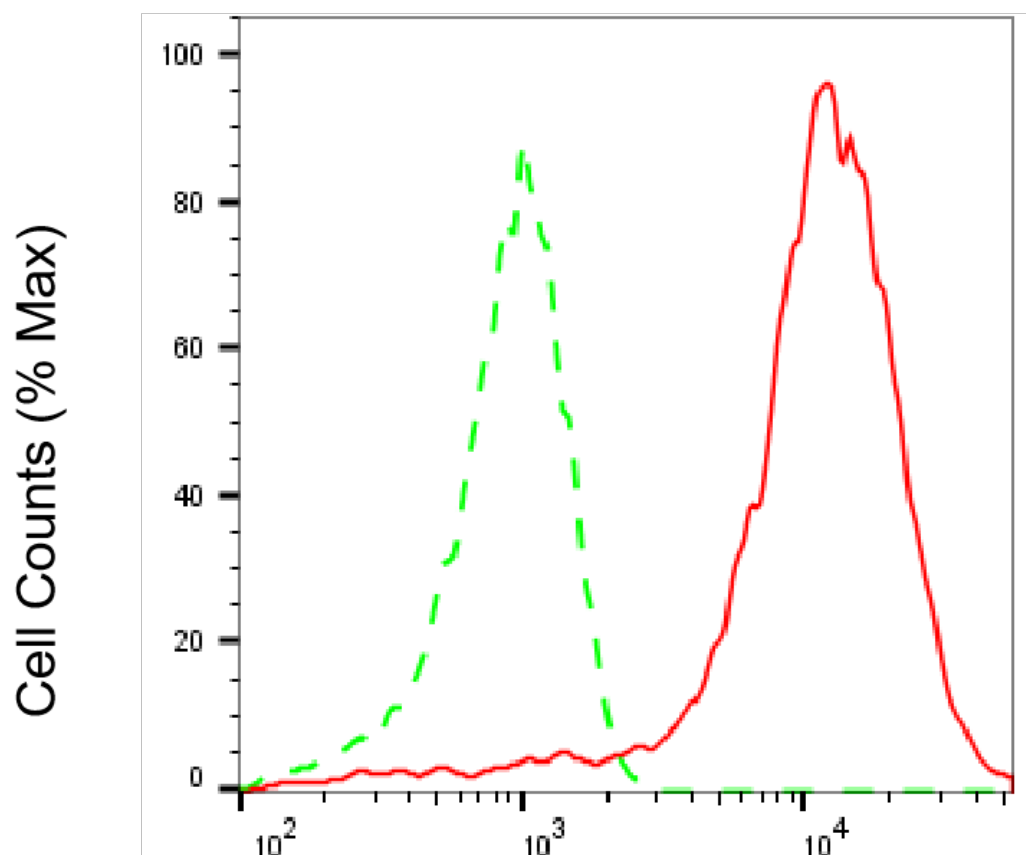
Western Blotting (WB): 1:1,000-1:5,000

Flow Cytometry (FCM): 1:1,000

Immunocytochemistry (IC): 1:100-1:1,000

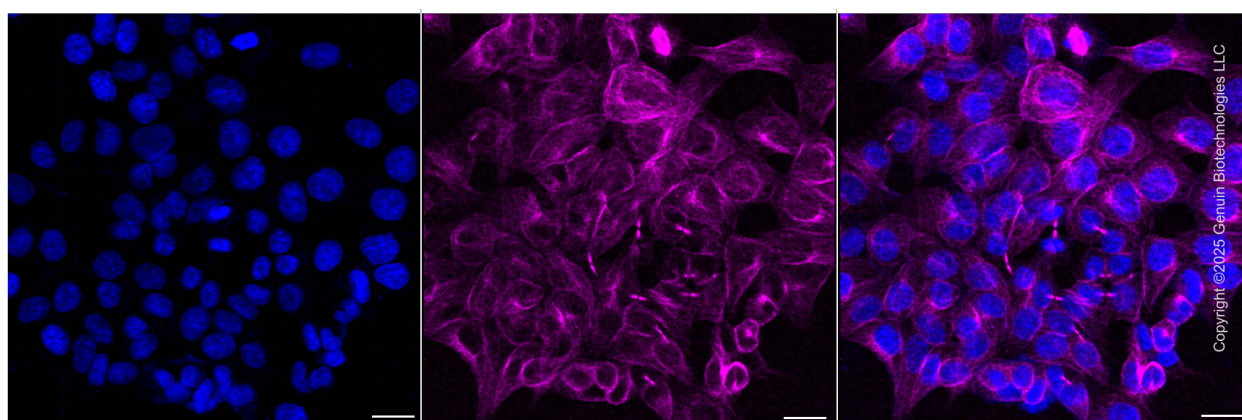
Note: This product is for research use only.

Validation Data



TUBB4A-Alexa Fluor® 647

Flow cytometric analysis of TUBB4A expression in HAP-1 cells using anti-TUBB4A antibody (Cat#5199, 1:2,000). Green, isotype control; red, TUBB4A.



Immunocytochemical staining of HAP-1 cells with anti-TUBB4A antibody (Cat#5199, 1:1,000) . Nuclei were stained blue with DAPI; TUBB4A was stained magenta with Alexa Fluor® 647.

SUPPORT

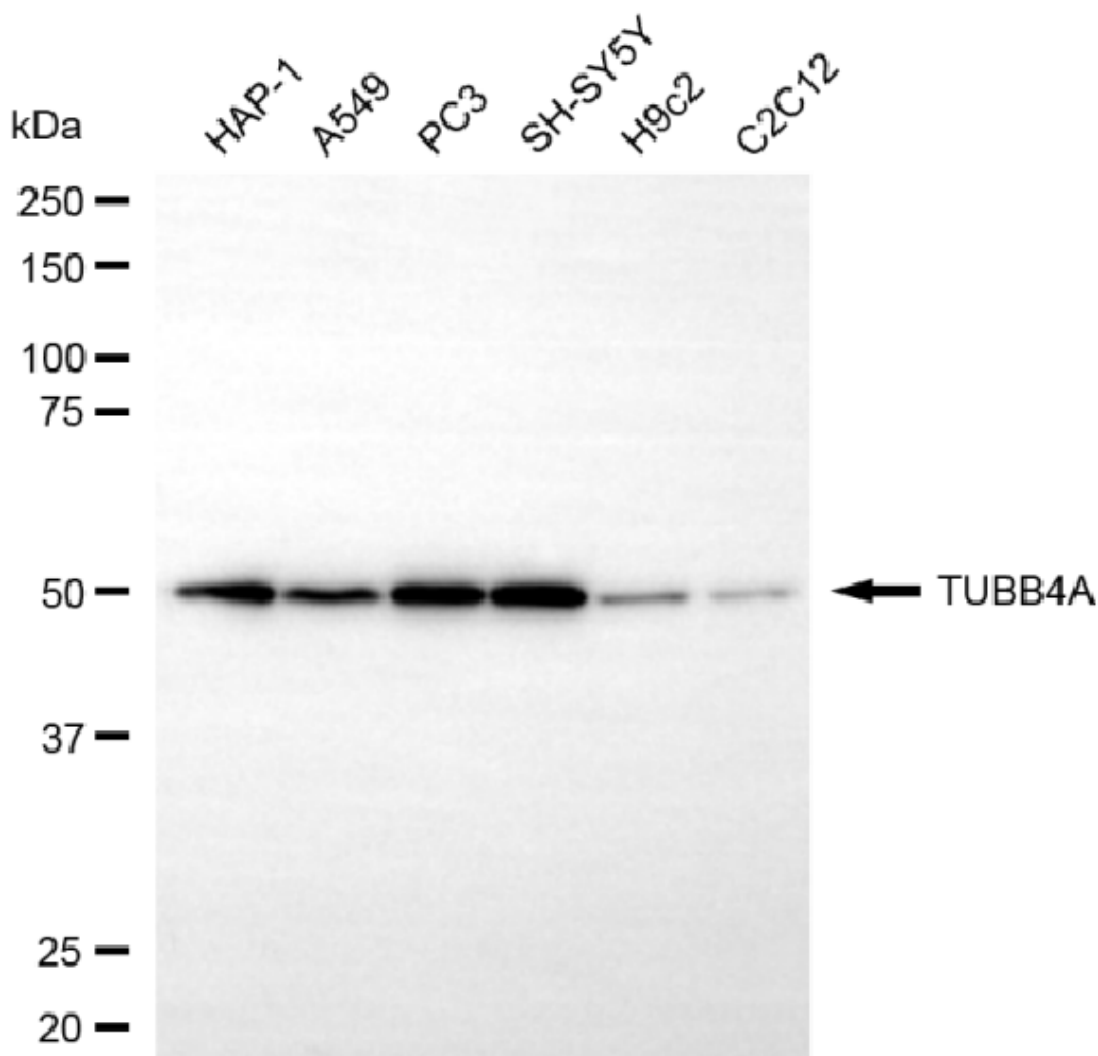
SUPPORT@GENUINBIOTECH.COM
TEL: +1-540-855-7041

ORDERS

SALES@GENUINBIOTECH.COM
FAX: +1-540-855-7041

WWW.GENUINBIOTECH.COM

Images were taken using Leica stellaris 5. Protein abundance based on laser Intensity and smart gain:Medium . Scale bar, 20 μ m.



Copyright ©2025 Genuin Biotechnologies LLC

Western blotting analysis using anti-TUBB4A antibody (Cat#5199). Total cell lysates (30 μ g) from various cell lines were loaded and separated by SDS-PAGE. The blot was incubated with anti-TUBB4A antibody (Cat#5199, 1:5,000) and HRP-conjugated goat anti-rabbit secondary antibody (Cat#201, 1:20,000) respectively. Image was developed using NaQ™ ECL Substrate Kit (Cat#716).

SUPPORT

SUPPORT@GENUINBIOTECH.COM
TEL: +1-540-855-7041

ORDERS

SALES@GENUINBIOTECH.COM
FAX: +1-540-855-7041

WWW.GENUINBIOTECH.COM