

Catalog #: 5206

Aliases

DLX4; Distal-Less Homeobox 4; DLX8; BP1; DLX7; DLX9; Homeobox Protein DLX-4; Homeobox Protein DLX-7; Homeobox Protein DLX-8; Beta Protein 1; Distal-Less Homeo Box 7; Distal-Less Homeo Box 9; OFC15

Background

Gene Name: DLX4

NCBI Gene Entry: [1748](#)

UniProt Entry: [Q92988](#)

Application Information

Molecular Weight: Predicted, 26 kDa; observed, 35 kDa

Clonality: Rabbit monoclonal antibody

Clone ID: 25GB155

Species Reactivity: Human, mouse, rat

Applications Tested: Western blotting (WB), flow cytometry (FCM), immunocytochemistry (IC)

Immunogen

A synthesized peptide derived from human Dlx4

Isotype

Rabbit IgG

Storage Buffer

Supplied in PBS (pH 7.4) containing 50% glycerol, and 0.02% sodium azide.

Storage

Store at -20 °C for one year.

Recommended Dilutions

Western Blotting (WB): 1:1,000-1:5,000

Flow Cytometry (FCM): 1:1,000

Immunocytochemistry (IC): 1:100-1:1,000

Note: This product is for research use only.

SUPPORT

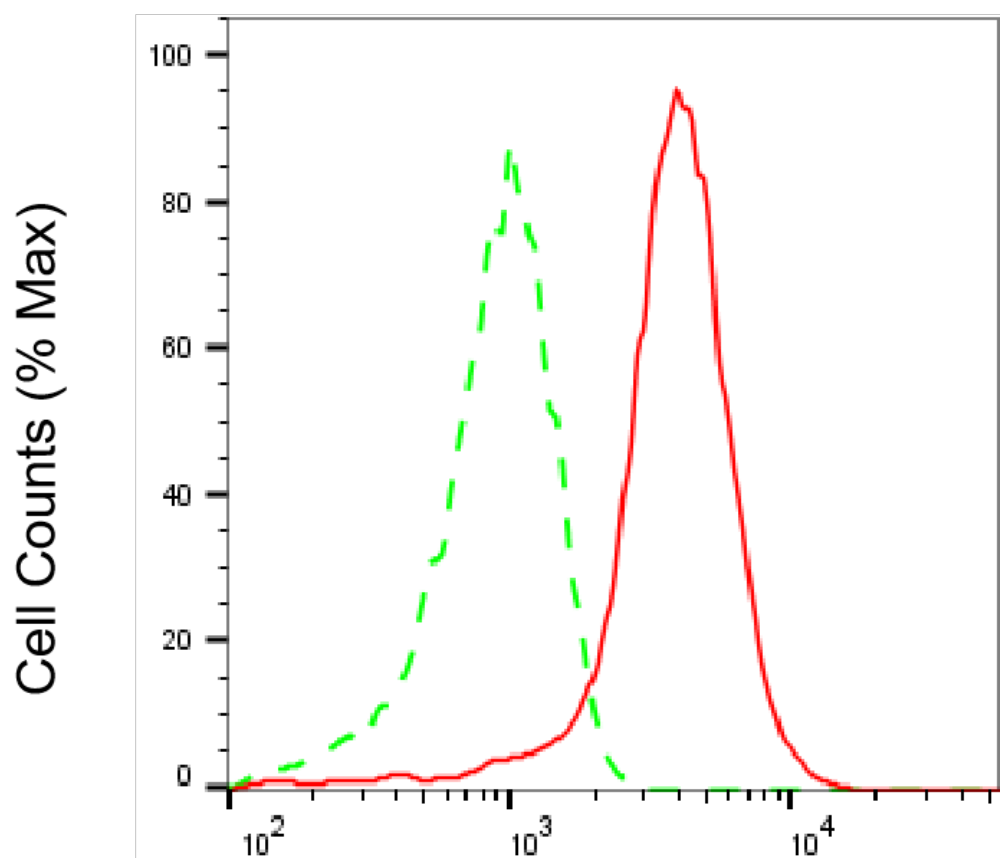
SUPPORT@GENUINBIOTECH.COM
TEL: +1-540-855-7041

ORDERS

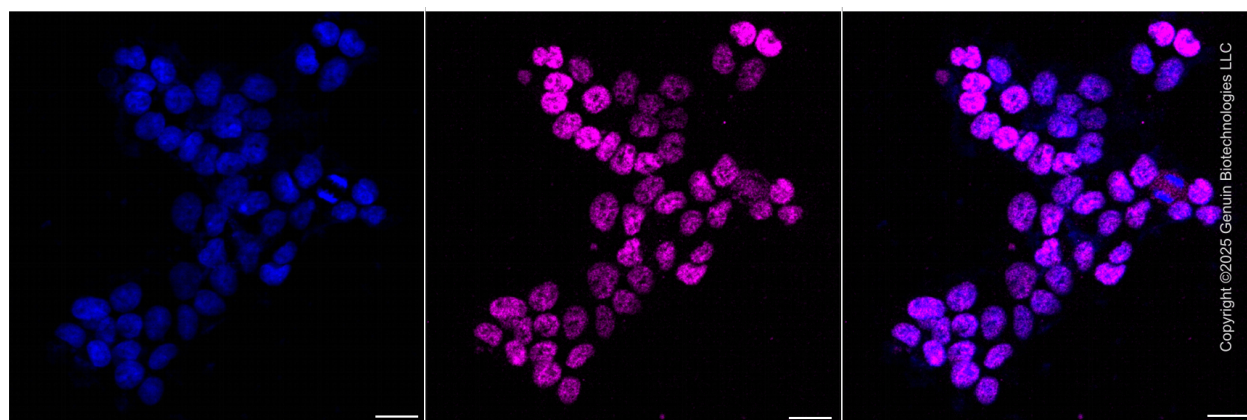
SALES@GENUINBIOTECH.COM
FAX: +1-540-855-7041

WWW.GENUINBIOTECH.COM

Validation Data



Flow cytometric analysis of DLX4 expression in HAP-1 cells using anti-DLX4 antibody (Cat#5206, 1:2,000). Green, isotype control; red, DLX4.



Immunocytochemical staining of HAP-1 cells with anti-DLX4 antibody (Cat#5206, 1:1,000). Nuclei were stained blue with DAPI; DLX4 was stained magenta with Alexa Fluor® 647. Images

SUPPORT

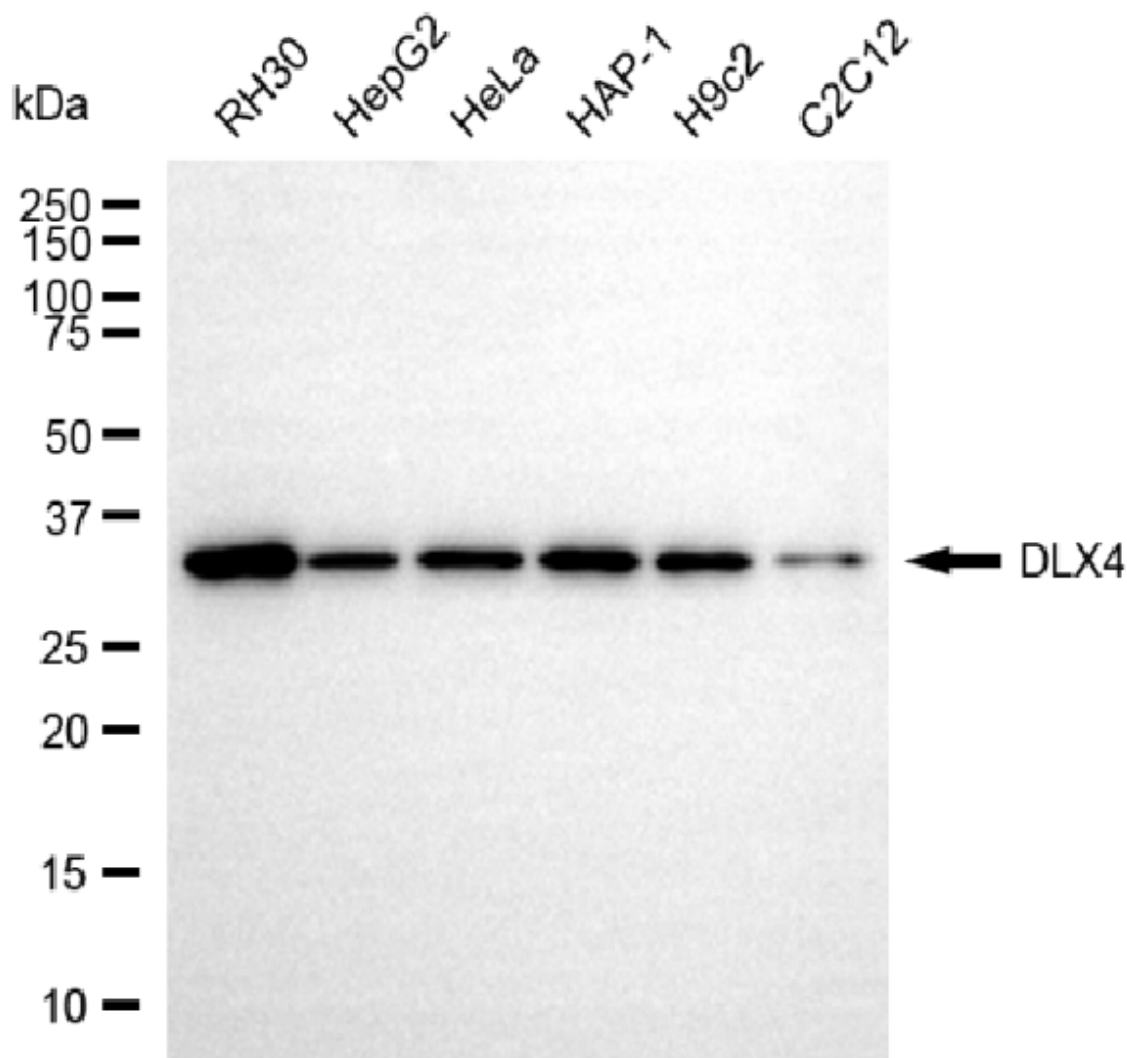
SUPPORT@GENUINBIOTECH.COM
TEL: +1-540-855-7041

ORDERS

SALES@GENUINBIOTECH.COM
FAX: +1-540-855-7041

WWW.GENUINBIOTECH.COM

were taken using Leica stellaris 5. Protein abundance based on laser Intensity and smart gain:Medium . Scale bar, 20 μ m.



Copyright ©2025 Genuin Biotechnologies LLC

Western blotting analysis using anti-DLX4 antibody (Cat#5206). Total cell lysates (30 μ g) from various cell lines were loaded and separated by SDS-PAGE. The blot was incubated with anti-DLX4 antibody (Cat#5206, 1:5,000) and HRP-conjugated goat anti-rabbit secondary antibody (Cat#201, 1:20,000) respectively. Image was developed using NaQ™ ECL Substrate Kit (Cat#716).