

## Catalog #: 52075

### Aliases

MAPK8; JNK1; PRKM8; SAPK1; SAPK1C; Mitogen-activated protein kinase 8; MAP kinase 8; JNK-46; Stress-activated protein kinase 1c; SAPK1c; Stress-activated protein kinase JNK1; c-Jun N-terminal kinase 1; MAPK9; JNK2; PRKM9; SAPK1A; Mitogen-activated protein kinase 9; MAP kinase 9; JNK-55; Stress-activated protein kinase 1a; SAPK1a; Stress-activated protein kinase JNK2; c-Jun N-terminal kinase 2; MAPK10; JNK3; JNK3A; PRKM10; SAPK1B; Mitogen-activated protein kinase 10; MAP kinase 10; MAP kinase p49 3F12; Stress-activated protein kinase 1b; SAPK1b; Stress-activated protein kinase JNK3; c-Jun N-terminal kinase 3

### Background

Gene Name: MAPK8/MAPK9/MAPK10

NCBI Gene Entry: [5599/5601/5602](#)

UniProt Entry: [P45983/P45984/P53779](#)

### Application Information

Molecular Weight: Predicted, 48,52 kDa; observed, 46,54 kDa

Clonality: Rabbit polyclonal antibody

Species Reactivity: Human, mouse, rat, bovine, chicken, pig

Applications Tested: Western blotting (WB), immunohistochemistry (IHC), immunocytochemistry (IC)

### Immunogen

A synthesized peptide derived from human JNK1/2/3

### Isotype

Rabbit IgG

### Storage Buffer

Supplied in PBS (pH 7.3) containing 30% glycerol, and 0.01% sodium azide.

### Storage

Store at -20 °C for one year.

### Recommended Dilutions

Western Blotting (WB): 1:500-1:1,000

Immunohistochemistry (IHC): 1:100-1:200

---

#### SUPPORT

SUPPORT@GENUINBIOTECH.COM  
TEL: +1-540-855-7041

#### ORDERS

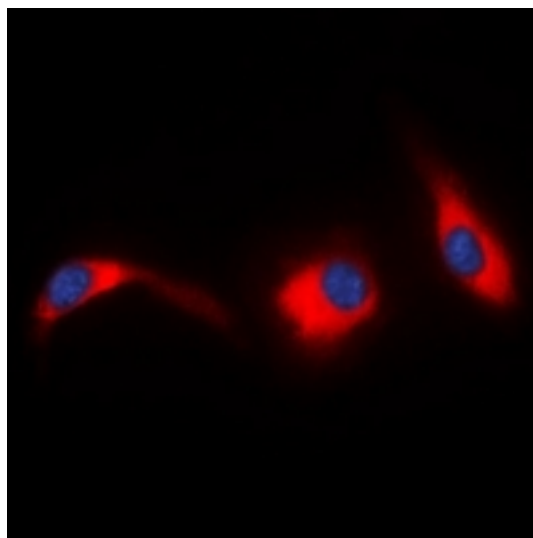
SALES@GENUINBIOTECH.COM  
FAX: +1-540-855-7041

#### WWW.GENUINBIOTECH.COM

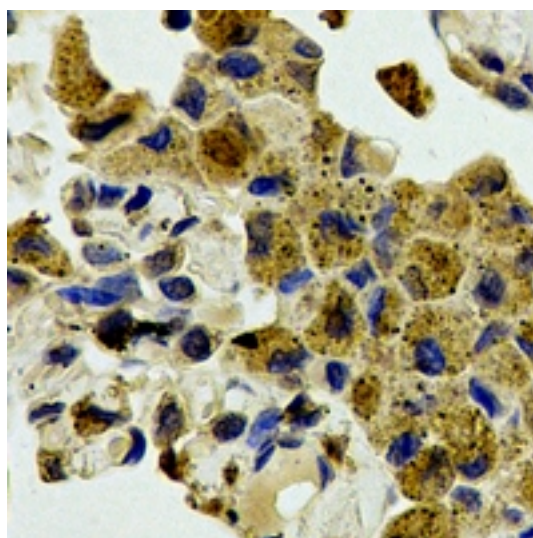
Immunocytochemistry (IC): 1:100-1:500

**Note:** This product is for research use only.

## Validation Data



Immunocytochemical analysis of JNK1/2/3 staining in LOVO cells. Formalin-fixed cells were permeabilized with 0.1% Triton X-100 in TBS for 5-10 minutes and blocked with 3% BSA-PBS for 30 minutes at room temperature. Cells were probed with the primary antibody in 3% BSA-PBS and incubated overnight at 4 °C in a humidified chamber. Cells were washed with PBST and incubated with a DyLight 594-conjugated secondary antibody (red) in PBS at room temperature in the dark. DAPI was used to stain the cell nuclei (blue).



Immunohistochemical analysis of JNK1/2/3 staining in human lung cancer formalin fixed paraffin embedded tissue section. The section was pre-treated using heat mediated antigen retrieval with sodium citrate buffer (pH 6.0). The section was then incubated with the antibody at room

---

### SUPPORT

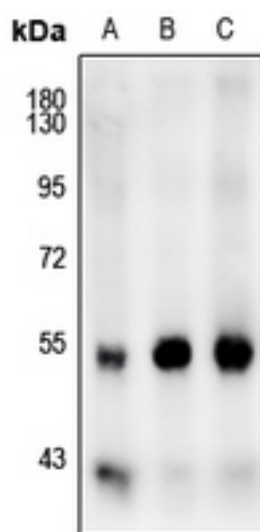
SUPPORT@GENUINBIOTECH.COM  
TEL: +1-540-855-7041

### ORDERS

SALES@GENUINBIOTECH.COM  
FAX: +1-540-855-7041

[WWW.GENUINBIOTECH.COM](http://WWW.GENUINBIOTECH.COM)

temperature and detected using an HRP conjugated compact polymer system. DAB was used as the chromogen. The section was then counterstained with haematoxylin and mounted with DPX.



Western blotting analysis of JNK1/2/3 expression in HCT116 (A), MCF7 (B), A549 (C) whole cell lysates.