

Catalog #: 5208

Aliases

FRAT1; FRAT Regulator Of WNT Signaling Pathway 1; Frequently Rearranged In Advanced T-Cell Lymphomas 1; FRAT1, WNT Signaling Pathway Regulator; Proto-Oncogene FRAT1; FRAT-1; Frequently Rearranged In Advanced T-Cell Lymphomas

Background

Gene Name: FRAT1

NCBI Gene Entry: [10023](#)

UniProt Entry: [Q92837](#)

Application Information

Molecular Weight: Predicted, 29 kDa; observed, 30 kDa

Clonality: Rabbit monoclonal antibody

Clone ID: 25GB165

Species Reactivity: Human, mouse, rat

Applications Tested: Western blotting (WB), flow cytometry (FCM)

Immunogen

A synthesized peptide derived from human FRAT1

Isotype

Rabbit IgG

Storage Buffer

Supplied in PBS (pH 7.4) containing 50% glycerol, and 0.02% sodium azide.

Storage

Store at -20 °C for one year.

Recommended Dilutions

Western Blotting (WB): 1:1,000-1:5,000

Flow Cytometry (FCM): 1:1,000

Note: This product is for research use only.

Validation Data

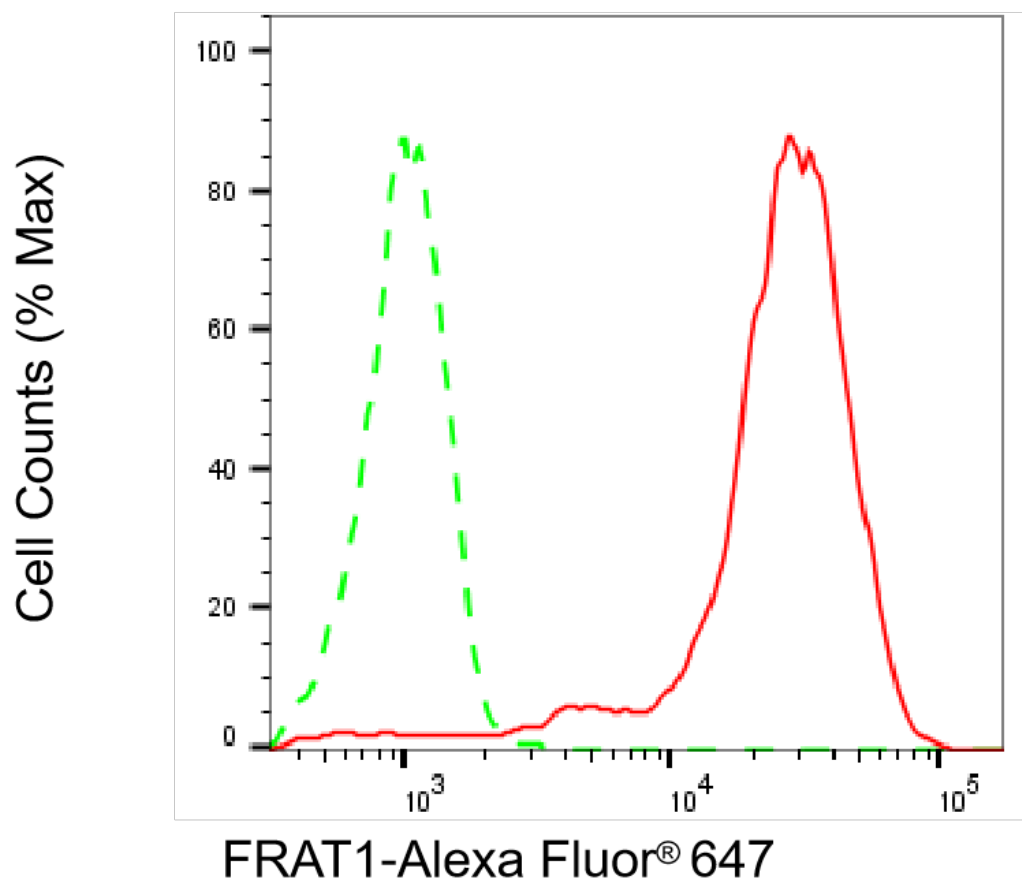
SUPPORT

SUPPORT@GENUINBIOTECH.COM
TEL: +1-540-855-7041

ORDERS

SALES@GENUINBIOTECH.COM
FAX: +1-540-855-7041

WWW.GENUINBIOTECH.COM



Copyright ©2025 Genuin Biotechnologies LLC

Flow cytometric analysis of FRAT1 expression in C2C12 cells using anti-FRAT1 antibody (Cat#5208, 1:2,000). Green, isotype control; red, FRAT1.

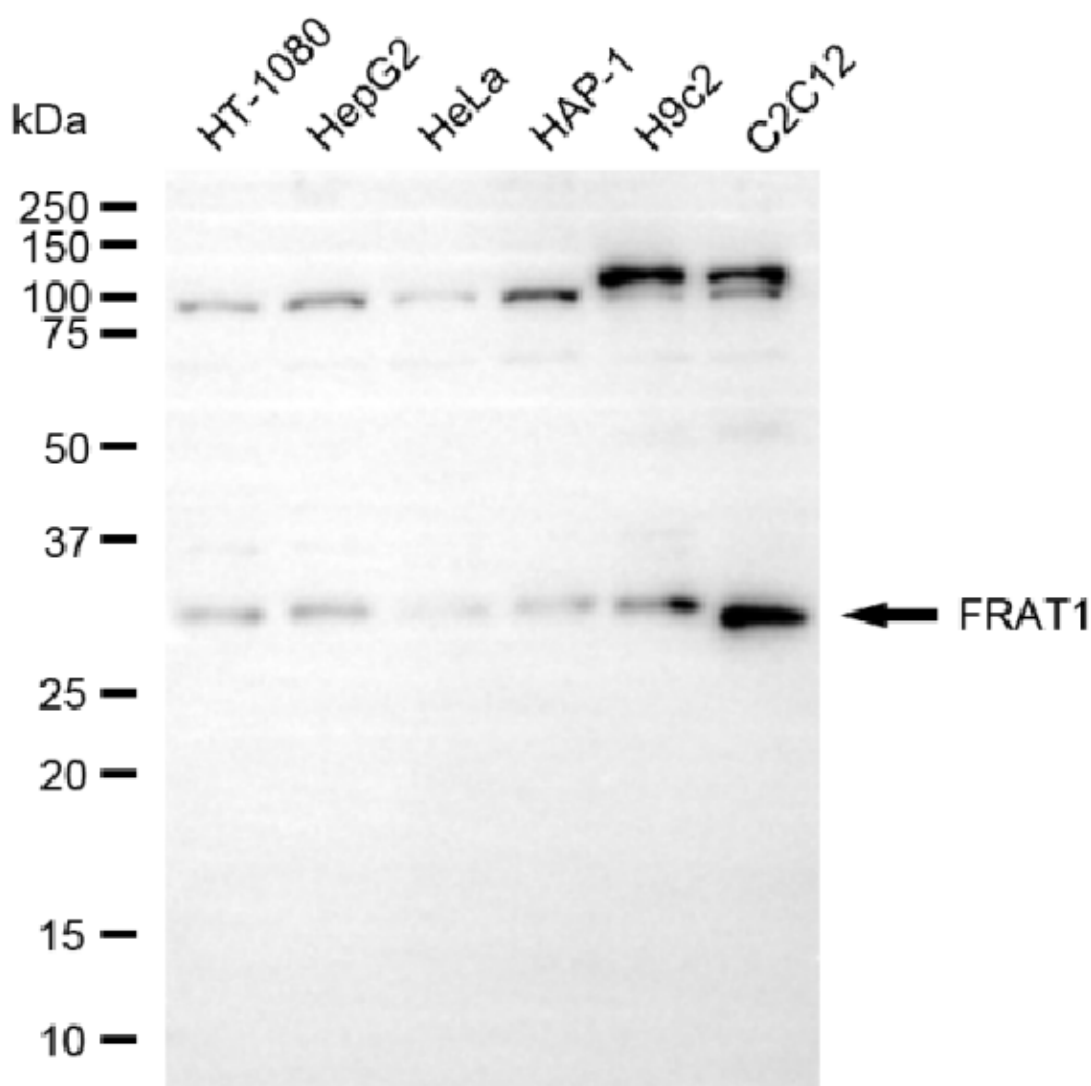
SUPPORT

SUPPORT@GENUINBIOTECH.COM
TEL: +1-540-855-7041

ORDERS

SALES@GENUINBIOTECH.COM
FAX: +1-540-855-7041

WWW.GENUINBIOTECH.COM



Copyright ©2025 Genuin Biotechnologies LLC

Western blotting analysis using anti-FRAT1 antibody (Cat#5208). Total cell lysates (30 µg) from various cell lines were loaded and separated by SDS-PAGE. The blot was incubated with anti-FRAT1 antibody (Cat#5208, 1:5,000) and HRP-conjugated goat anti-rabbit secondary antibody (Cat#201, 1:20,000) respectively. Image was developed using NaQ™ ECL Substrate Kit (Cat#716).

SUPPORT

SUPPORT@GENUINBIOTECH.COM
TEL: +1-540-855-7041

ORDERS

SALES@GENUINBIOTECH.COM
FAX: +1-540-855-7041

WWW.GENUINBIOTECH.COM