

Anti-DYKDDDDK-Tag Rabbit Polyclonal Antibody



Catalog #: 52108

Aliases

DDDDK epitope tag; DDDDK epitope tag; DYKDDDDK epitope tag

Background

Gene Name: N/A

Application Information

Molecular Weight: Recombinant protein dependent

Clonality: Rabbit polyclonal antibody

Species Reactivity: Recombinant protein

Applications Tested: Western blotting (WB), immunoprecipitation (IP)

Immunogen

A synthesized peptide derived from DYKDDDDK

Isotype

Rabbit IgG

Storage Buffer

Supplied in PBS (pH 7.3) containing 30% glycerol, and 0.01% sodium azide.

Storage

Store at -20 °C for one year.

Recommended Dilutions

Western Blotting (WB): 1:1,000-1:2,000

Immunoprecipitation (IP): 1:10-1:100

Note: This product is for research use only.

Validation Data

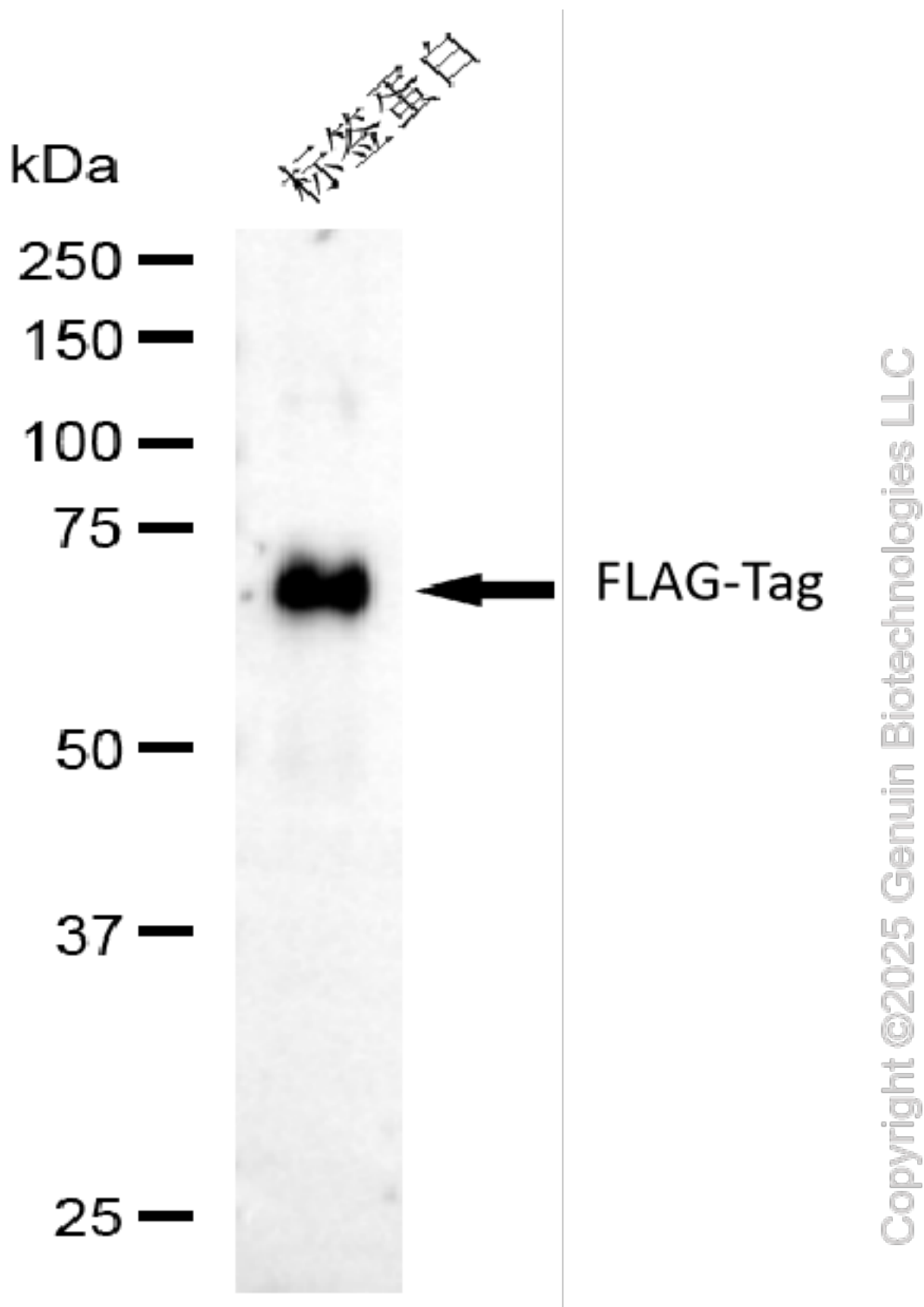
SUPPORT

SUPPORT@GENUINBIOTECH.COM
TEL: +1-540-855-7041

ORDERS

SALES@GENUINBIOTECH.COM
FAX: +1-540-855-7041

WWW.GENUINBIOTECH.COM



Western blotting analysis using anti-FLAG-tag antibody (Cat#52108). Total lysates (30 μ g) were loaded and separated by SDS-PAGE. The blot was incubated with anti-FLAG-tag antibody

SUPPORT

SUPPORT@GENUINBIOTECH.COM
TEL: +1-540-855-7041

ORDERS

SALES@GENUINBIOTECH.COM
FAX: +1-540-855-7041

WWW.GENUINBIOTECH.COM

Anti-DYKDDDDK-Tag Rabbit Polyclonal Antibody

PAGE 3

(Cat#52108, 1:2,500) and HRP-conjugated goat anti-rabbit secondary antibody (Cat#201, 1:20,000) respectively. Image was developed using FeQ™ ECL Substrate Kit (Cat#226).

SUPPORT

SUPPORT@GENUINBIOTECH.COM
TEL: +1-540-855-7041

ORDERS

SALES@GENUINBIOTECH.COM
FAX: +1-540-855-7041

WWW.GENUINBIOTECH.COM