

# Anti-COVID-19 Spike glycoprotein Rabbit Polyclonal Antibody



**Catalog #: 52113**

## Aliases

Spike glycoprotein; S glycoprotein; E2; Peplomer protein

## Background

Gene Name: S

NCBI Gene Entry: [43740568](#)

UniProt Entry: [P0DTC2](#)

## Application Information

Molecular Weight: Predicted, \; observed, 35-43 kDa

Clonality: Rabbit polyclonal antibody

Species Reactivity: COVID-19

Applications Tested: Western blotting (WB)

## Immunogen

A synthesized peptide derived from COVID-19 Spike glycoprotein

## Isotype

Rabbit IgG

## Storage Buffer

Supplied in PBS (pH 7.3) containing 30% glycerol, and 0.01% sodium azide.

## Storage

Store at -20 °C for one year.

## Recommended Dilutions

Western Blotting (WB): 1:1,000-1:3,000

**Note:** This product is for research use only.

## Validation Data

---

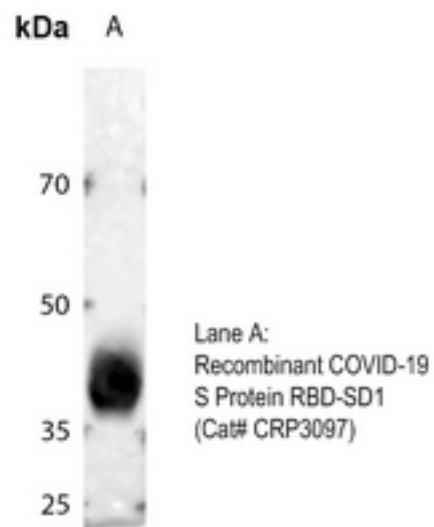
### SUPPORT

SUPPORT@GENUINBIOTECH.COM  
TEL: +1-540-855-7041

### ORDERS

SALES@GENUINBIOTECH.COM  
FAX: +1-540-855-7041

[WWW.GENUINBIOTECH.COM](http://WWW.GENUINBIOTECH.COM)



Western blotting analysis of COVID-19 Spike glycoprotein using Recombinant COVID-19 S Protein RBD-SD1 (A).