

Anti-COVID-19 Envelope Protein Rabbit Polyclonal Antibody



Catalog #: 52114

Aliases

Envelope small membrane protein; E protein; sM protein

Background

Gene Name: E

NCBI Gene Entry: [43740570](#)

UniProt Entry: [P0DTC4](#)

Application Information

Molecular Weight: Predicted, \; observed, 26 kDa

Clonality: Rabbit polyclonal antibody

Species Reactivity: COVID-19

Applications Tested: Western blotting (WB)

Immunogen

A synthesized peptide derived from the C-term region of COVID-19 Envelope Protein

Isotype

Rabbit IgG

Storage Buffer

Supplied in PBS (pH 7.3) containing 30% glycerol, and 0.01% sodium azide.

Storage

Store at -20 °C for one year.

Recommended Dilutions

Western Blotting (WB): 1:1,000-1:3,000

Note: This product is for research use only.

Validation Data

SUPPORT

SUPPORT@GENUINBIOTECH.COM
TEL: +1-540-855-7041

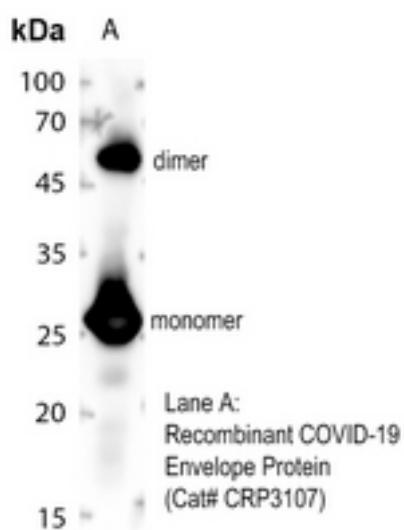
ORDERS

SALES@GENUINBIOTECH.COM
FAX: +1-540-855-7041

WWW.GENUINBIOTECH.COM

Anti-COVID-19 Envelope Protein Rabbit Polyclonal Antibody

PAGE 2



Western blotting analysis of COVID-19 Envelope Protein using Recombinant COVID-19 Envelope Protein (A).

SUPPORT

SUPPORT@GENUINBIOTECH.COM
TEL: +1-540-855-7041

ORDERS

SALES@GENUINBIOTECH.COM
FAX: +1-540-855-7041

WWW.GENUINBIOTECH.COM