

Anti-Prostaglandin D Synthase Rabbit Monoclonal Antibody



Catalog #: 5215

Aliases

PTGDS; Prostaglandin D2 Synthase; L-PGDS; PGDS; Lipocalin-Type Prostaglandin D Synthase; Prostaglandin D2 Synthase 21kDa (Brain); Glutathione-Independent PGD Synthase; Prostaglandin-H2 D-Isomerase; Beta-Trace Protein; PGD2 Synthase; Cerebrin-28; EC 5.3.99.2; PGDS2; PDS; Testis Tissue Sperm-Binding Protein Li 63n; Prostaglandin D2 Synthase (21kD, Brain); Lipocalin-Type Prostaglandin-D Synthase; Glutathione-Independent PGD Synthetase; Prostaglandin-D2 Synthase; Prostaglandin D Synthase; LPGDS; PGD2

Background

Gene Name: PTGDS

NCBI Gene Entry: [5730](#)

UniProt Entry: [P41222](#)

Application Information

Molecular Weight: Predicted, 21 kDa; observed, 28 kDa

Clonality: Rabbit monoclonal antibody

Clone ID: 25GB200

Species Reactivity: Human, mouse, rat

Applications Tested: Western blotting (WB), flow cytometry (FCM), immunocytochemistry (IC)

Immunogen

A synthesized peptide derived from human Prostaglandin D Synthase

Isotype

Rabbit IgG

Storage Buffer

Supplied in PBS (pH 7.4) containing 50% glycerol, and 0.02% sodium azide.

Storage

Store at -20 °C for one year.

Recommended Dilutions

Western Blotting (WB): 1:1,000-1:5,000

Flow Cytometry (FCM): 1:1,000

Immunocytochemistry (IC): 1:100-1:1,000

SUPPORT

SUPPORT@GENUINBIOTECH.COM
TEL: +1-540-855-7041

ORDERS

SALES@GENUINBIOTECH.COM
FAX: +1-540-855-7041

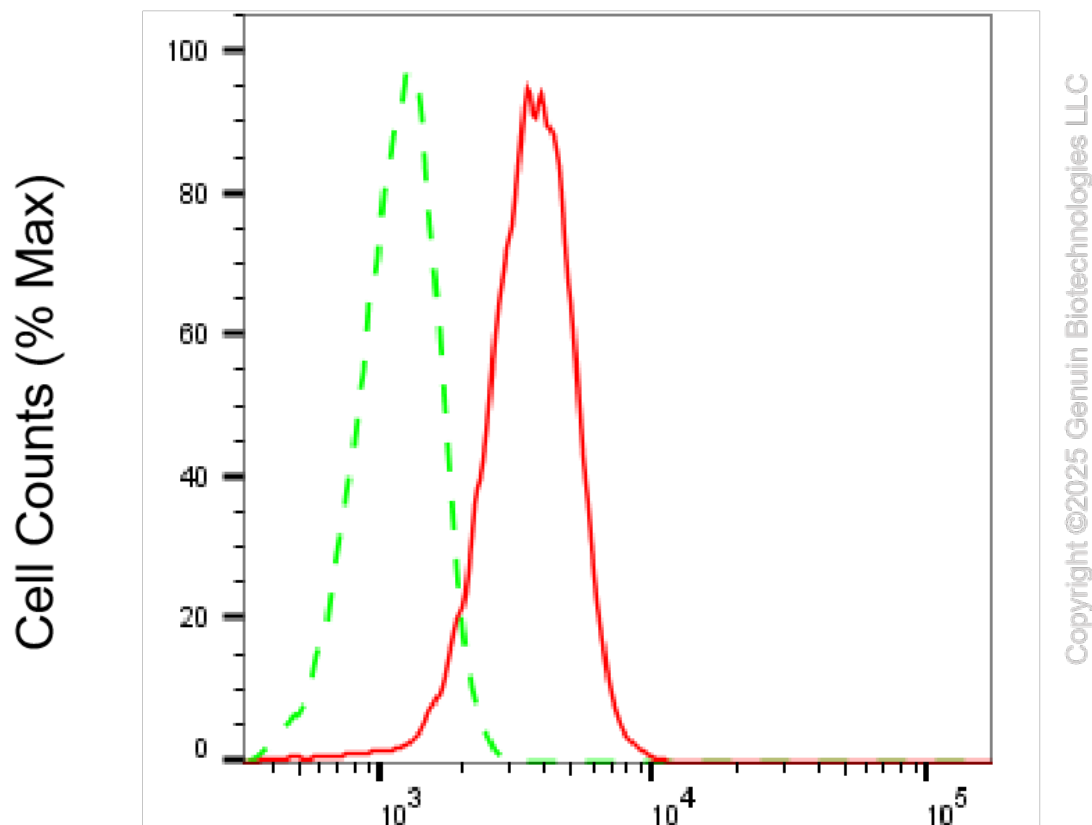
WWW.GENUINBIOTECH.COM

Anti-Prostaglandin D Synthase Rabbit Monoclonal Antibody

PAGE 2

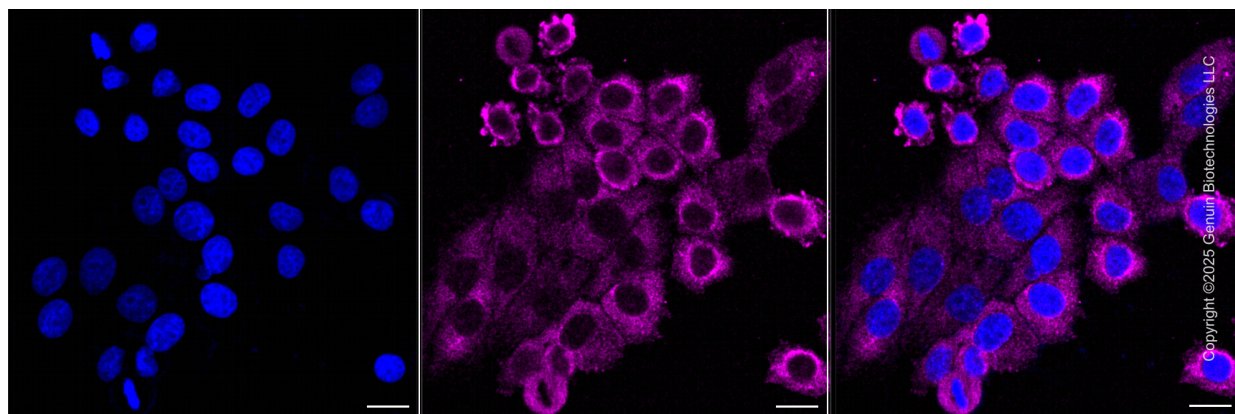
Note: This product is for research use only.

Validation Data



Prostaglandin D2 synthase-Alexa Fluor® 647

Flow cytometric analysis of Prostaglandin D2 synthase expression in HepG2 cells using anti-Prostaglandin D2 synthase antibody (Cat#5215, 1:2,000). Green, isotype control; red, Prostaglandin D2 synthase.



SUPPORT

SUPPORT@GENUINBIOTECH.COM
TEL: +1-540-855-7041

ORDERS

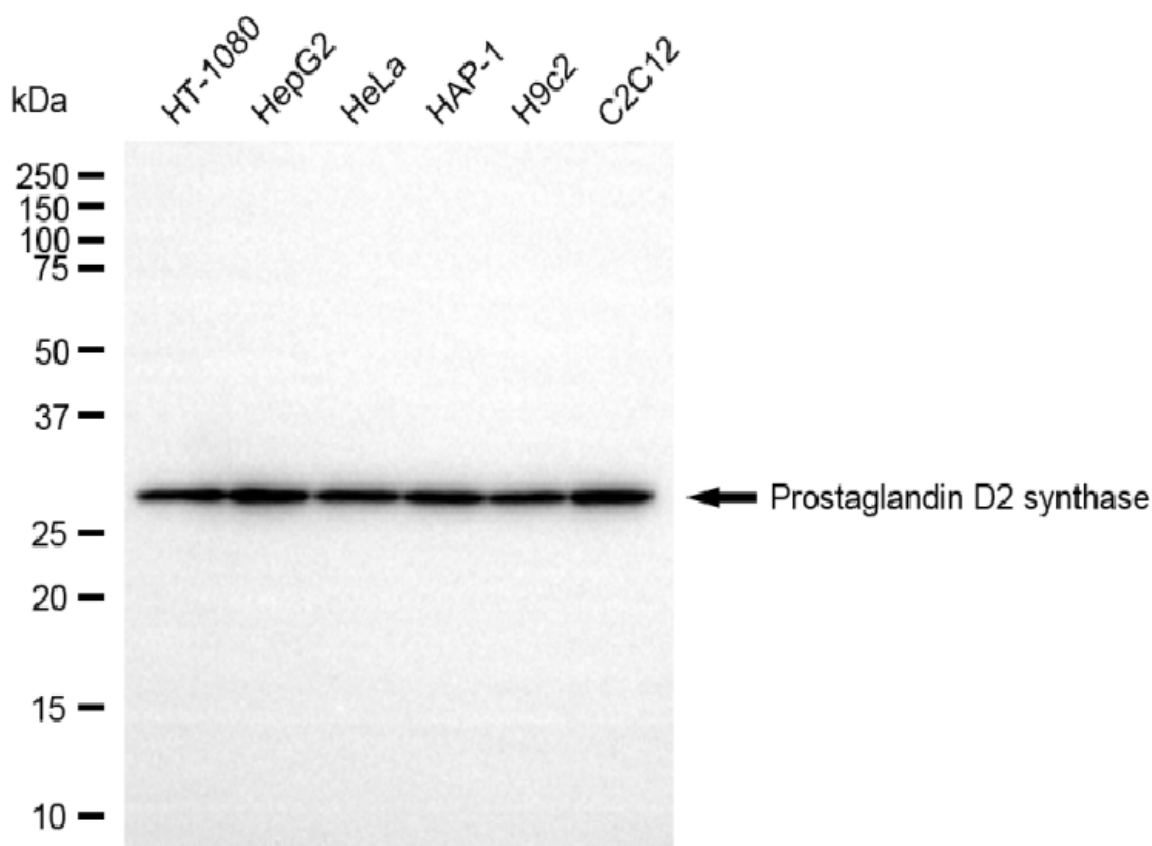
SALES@GENUINBIOTECH.COM
FAX: +1-540-855-7041

WWW.GENUINBIOTECH.COM

Anti-Prostaglandin D Synthase Rabbit Monoclonal Antibody

PAGE 3

Immunocytochemical staining of HepG2 cells with anti-Prostaglandin D2 synthase antibody (Cat#5215, 1:1,000). Nuclei were stained blue with DAPI; Prostaglandin D2 synthase was stained magenta with Alexa Fluor® 647. Images were taken using Leica stellaris 5. Protein abundance based on laser Intensity and smart gain: Medium. Scale bar, 20 μ m.



Copyright ©2025 Genuin Biotechnologies LLC

Western blotting analysis using anti-prostaglandin D2 synthase antibody (Cat#5215). Total cell lysates (30 μ g) from various cell lines were loaded and separated by SDS-PAGE. The blot was incubated with anti-prostaglandin D2 synthase antibody (Cat#5215, 1:5,000) and HRP-conjugated goat anti-rabbit secondary antibody (Cat#201, 1:20,000) respectively. Image was developed using NaQ™ ECL Substrate Kit (Cat#716).

SUPPORT

SUPPORT@GENUINBIOTECH.COM
TEL: +1-540-855-7041

ORDERS

SALES@GENUINBIOTECH.COM
FAX: +1-540-855-7041

WWW.GENUINBIOTECH.COM