

Catalog #: 52153

Aliases

MDU1; 4F2 cell-surface antigen heavy chain; 4F2hc; 4F2 heavy chain antigen; Lymphocyte activation antigen 4F2 large subunit; Solute carrier family 3 member 2; CD98

Background

Gene Name: SLC3A2

NCBI Gene Entry: [6520](#)

UniProt Entry: [P08195](#)

Application Information

Molecular Weight: Predicted, 68 kDa; observed, 69 kDa

Clonality: Rabbit polyclonal antibody

Species Reactivity: Human, mouse, rat

Applications Tested: Western blotting (WB)

Immunogen

A synthesized peptide derived from human SLC3A2

Isotype

Rabbit IgG

Storage Buffer

Supplied in PBS containing 50% glycerol, 0.5% BSA and 0.02% sodium azide.

Storage

Store at -20 °C for one year.

Recommended Dilutions

Western Blotting (WB): 1:500-1:2,000

Note: This product is for research use only.

Validation Data

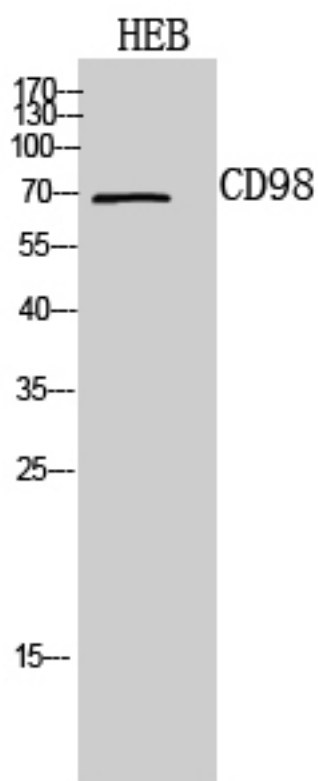
SUPPORT

SUPPORT@GENUINBIOTECH.COM
TEL: +1-540-855-7041

ORDERS

SALES@GENUINBIOTECH.COM
FAX: +1-540-855-7041

WWW.GENUINBIOTECH.COM



Western blotting analysis of HEB cells using anti-CD98 antibody. The blot was incubated with anti-CD98 antibody (Cat#52153) and HRP-conjugated goat anti-rabbit secondary antibody (Cat#201, 1:20,000) respectively.