

**Catalog #: 52172**

## Aliases

GRM7; Glutamate Metabotropic Receptor 7; GPRC1G; MGLUR7; PPP1R87; GLUR7; MGlu7; Protein Phosphatase 1, Regulatory Subunit 87; Glutamate Receptor, Metabotropic 7; Metabotropic Glutamate Receptor 7; NEDSHBA; MGluR7

## Background

Gene Name: GRM7

NCBI Gene Entry: [2917](#)

UniProt Entry: [Q14831](#)

## Application Information

Molecular Weight: Predicted, 102 kDa; observed, 102 kDa

Clonality: Rabbit polyclonal antibody

Species Reactivity: Human, mouse, rat

Applications Tested: Western blotting (WB), immunohistochemistry (IHC)

## Immunogen

A synthesized peptide derived from human GRM7

## Isotype

Rabbit IgG

## Storage Buffer

Supplied in PBS containing 50% glycerol, 0.5% BSA and 0.02% sodium azide.

## Storage

Store at -20 °C for one year.

## Recommended Dilutions

Western Blotting (WB): 1:500-1:2,000

Immunohistochemistry (IHC): 1:50-1:300

**Note:** This product is for research use only.

## Validation Data

---

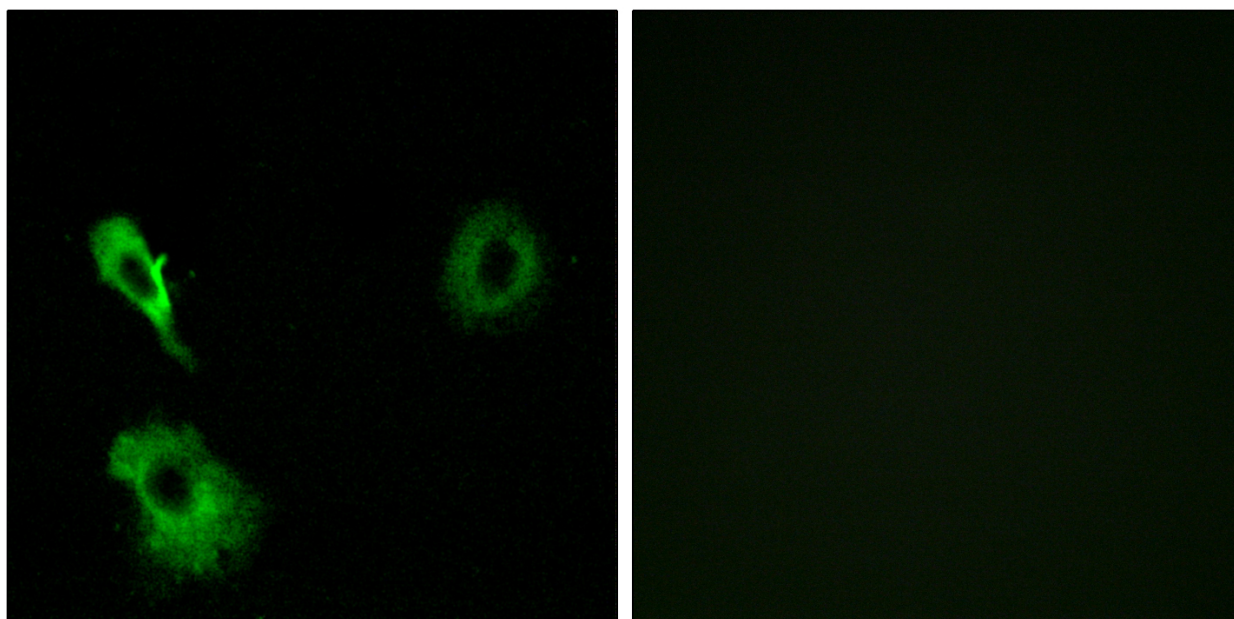
### SUPPORT

SUPPORT@GENUINBIOTECH.COM  
TEL: +1-540-855-7041

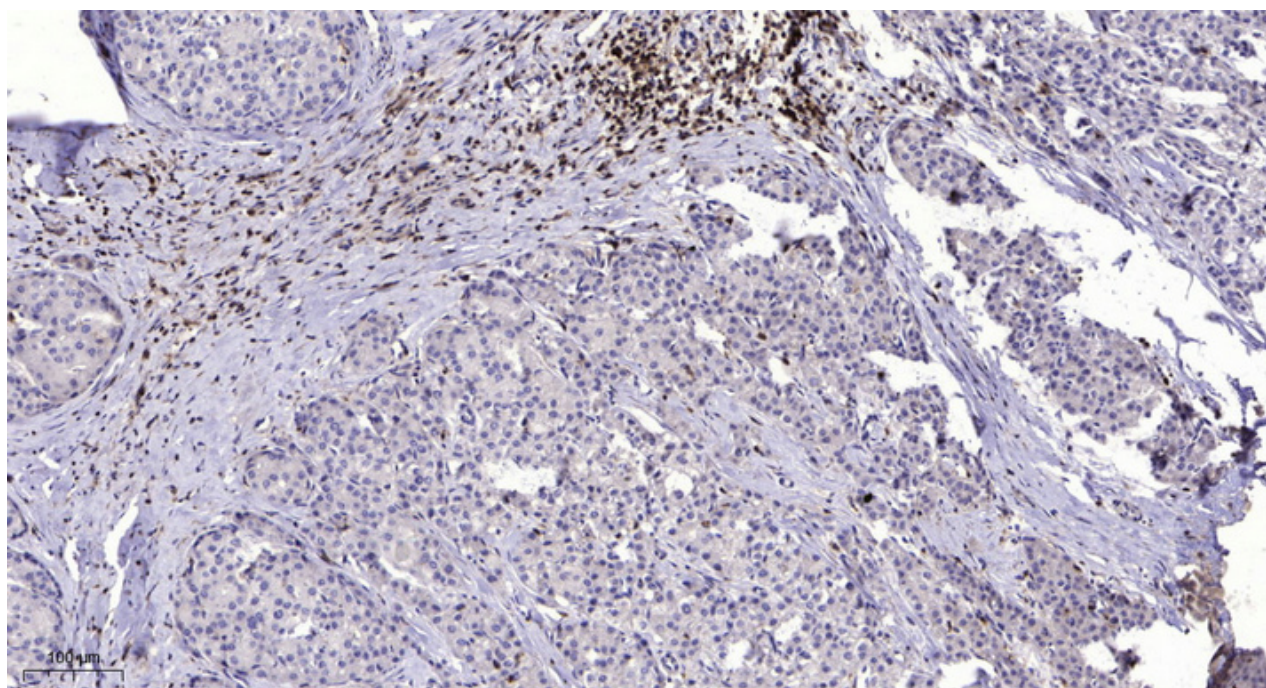
### ORDERS

SALES@GENUINBIOTECH.COM  
FAX: +1-540-855-7041

[WWW.GENUINBIOTECH.COM](http://WWW.GENUINBIOTECH.COM)



Immunofluorescence analysis of A549 cells, using GRM7 Antibody. The picture on the right is blocked with the synthesized peptide.



Immunohistochemical analysis of paraffin-embedded human liver cancer. 1, Antibody was diluted at 1:200(4° overnight). 2, Tris-EDTA,pH9.0 was used for antigen retrieval. 3,Secondary antibody was diluted at 1:200(room temperature, 45min).

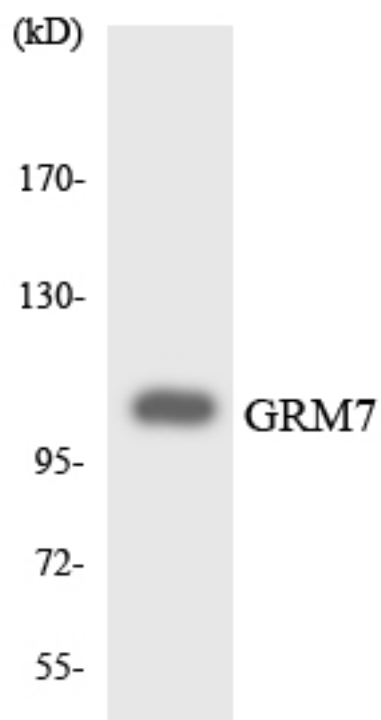
### SUPPORT

SUPPORT@GENUINBIOTECH.COM  
TEL: +1-540-855-7041

### ORDERS

SALES@GENUINBIOTECH.COM  
FAX: +1-540-855-7041

[WWW.GENUINBIOTECH.COM](http://WWW.GENUINBIOTECH.COM)



Western blotting analysis of the lysates from HUVEC cells using GRM7 antibody.