

Catalog #: 52175

Aliases

IL18; Interleukin 18; IL1F4; IL-18; IGIF; IL-1g; Interleukin 18 (Interferon-Gamma-Inducing Factor); IFN-Gamma-Inducing Factor; Interleukin-1 Gamma; Interleukin-18; Iboctadekin; IL-1 Gamma; Interferon-Gamma-Inducing Factor; Interferon Gamma-Inducing Factor

Background

Gene Name: IL18

NCBI Gene Entry: [3606](#)

UniProt Entry: [Q14116](#)

Application Information

Molecular Weight: Predicted, 22 kDa; observed, 21kDa

Clonality: Rabbit polyclonal antibody

Species Reactivity: Human, mouse, rat

Applications Tested: Western blotting (WB), immunocytochemistry (IC)

Immunogen

A synthesized peptide derived from human protein

Isotype

Rabbit IgG

Storage Buffer

Supplied in PBS containing 50% glycerol, and 0.02% sodium azide.

Storage

Store at -20 °C for one year.

Recommended Dilutions

Western Blotting (WB): 1:500-1:2,000

Immunocytochemistry (IC): 1:100-1:300

Note: This product is for research use only.

Validation Data

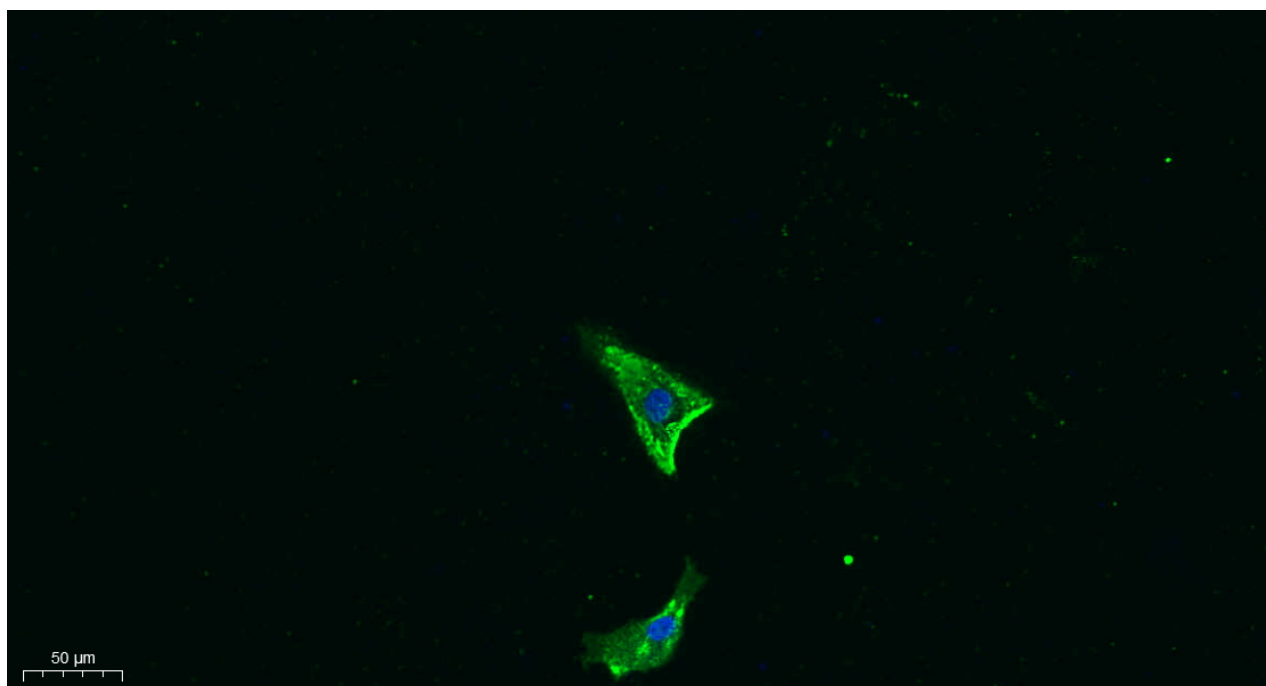
SUPPORT

SUPPORT@GENUINBIOTECH.COM
TEL: +1-540-855-7041

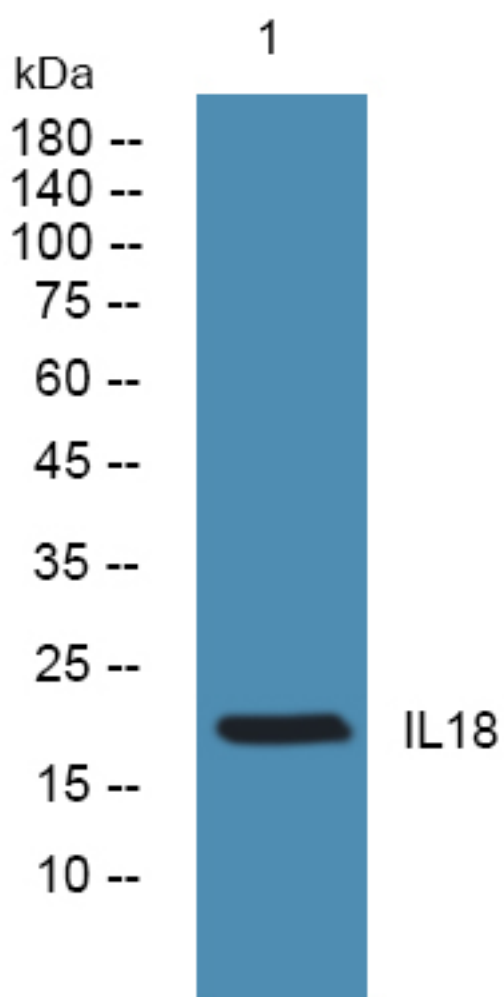
ORDERS

SALES@GENUINBIOTECH.COM
FAX: +1-540-855-7041

WWW.GENUINBIOTECH.COM



Immunocytochemical analysis of A549. Primary Antibody was diluted at 1:200 (4°C overnight). Goat Anti Rabbit IgG (H&L) - Alexa Fluor 488 Secondary antibody was diluted at 1:1,000 (room temperature, 50min).3, Picture B: DAPI (blue) 10min.



Western blotting analysis of lysates from Jurkat cells, primary antibody was diluted at 1:1,000, 4°C over night.