

## Catalog #: 5219

### Aliases

RPS6KA2; Ribosomal Protein S6 Kinase A2; RSK3; HU-2; MAP Kinase-Activated Protein Kinase 1c; Ribosomal Protein S6 Kinase Alpha-2; MAPK-Activated Protein Kinase 1c; Ribosomal S6 Kinase 3; EC 2.7.11.1; MAPKAPK1C; Pp90RSK3; P90RSK2; Mitogen-Activated Protein Kinase-Activated Protein Kinase 1C; Ribosomal Protein S6 Kinase, 90kDa, Polypeptide 2; Ribosomal Protein S6 Kinase, 90kD, Polypeptide 2; 90 KDa Ribosomal Protein S6 Kinase 2; MAPKAP Kinase 1c; S6K-Alpha-2; S6K-Alpha2; MAPKAPK-1c; S6K-Alpha; P90-RSK 2; EC 2.7.11; P90-RSK3; RSK-3; RSK

### Background

Gene Name: RPS6KA2

NCBI Gene Entry: [6193](#)

UniProt Entry: [Q15349](#)

### Application Information

Molecular Weight: Predicted, 83 kDa; observed, 75 kDa

Clonality: Rabbit monoclonal antibody

Clone ID: 25GB220

Species Reactivity: Human, mouse, rat

Applications Tested: Western blotting (WB), flow cytometry (FCM), immunocytochemistry (IC)

### Immunogen

A synthesized peptide derived from human RSK3

### Isotype

Rabbit IgG

### Storage Buffer

Supplied in PBS (pH 7.4) containing 50% glycerol, and 0.02% sodium azide.

### Storage

Store at -20 °C for one year.

### Recommended Dilutions

Western Blotting (WB): 1:1,000-1:5,000

Flow Cytometry (FCM): 1:1,000

---

#### SUPPORT

SUPPORT@GENUINBIOTECH.COM  
TEL: +1-540-855-7041

#### ORDERS

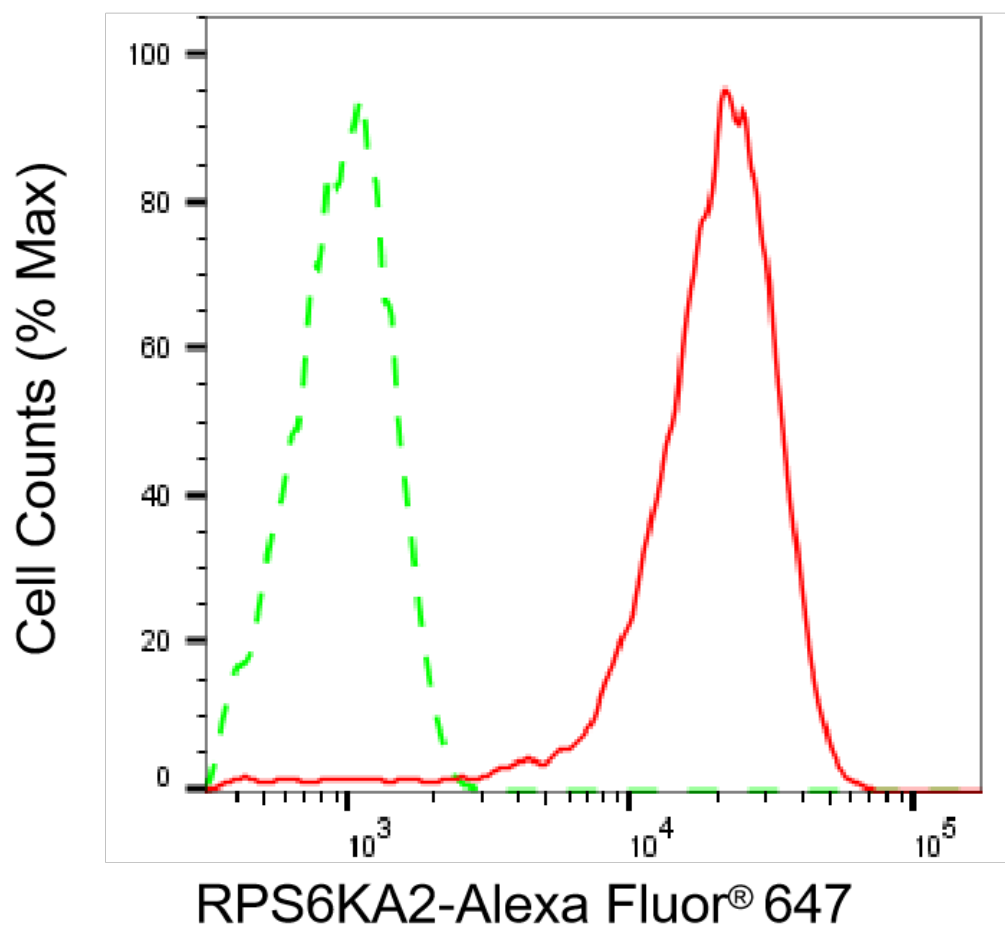
SALES@GENUINBIOTECH.COM  
FAX: +1-540-855-7041

[WWW.GENUINBIOTECH.COM](http://WWW.GENUINBIOTECH.COM)

Immunocytochemistry (IC): 1:100-1:1,000

**Note:** This product is for research use only.

## Validation Data



Copyright ©2025 Genuin Biotechnologies LLC

Flow cytometric analysis of RPS6KA2 expression in HeLa cells using anti-RPS6KA2 antibody (Cat#5219, 1:2,000). Green, isotype control; red, RPS6KA2.

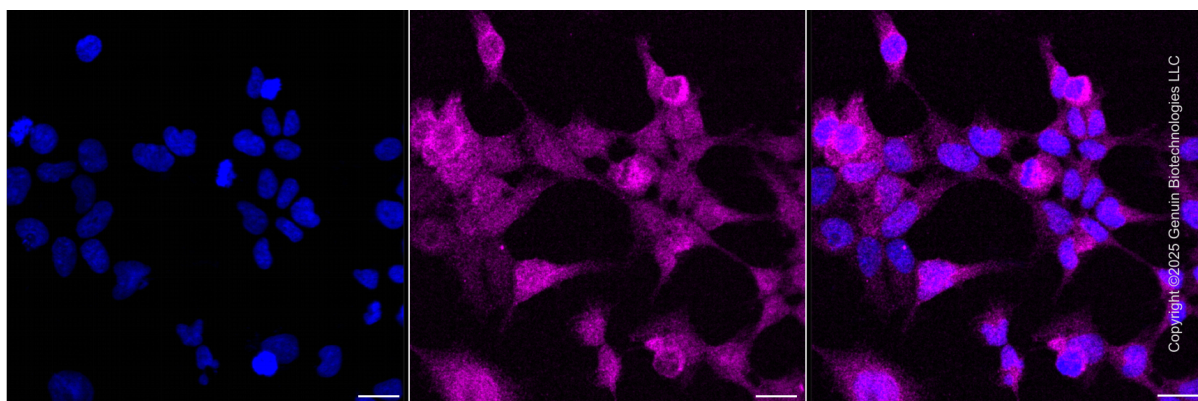
### SUPPORT

SUPPORT@GENUINBIOTECH.COM  
TEL: +1-540-855-7041

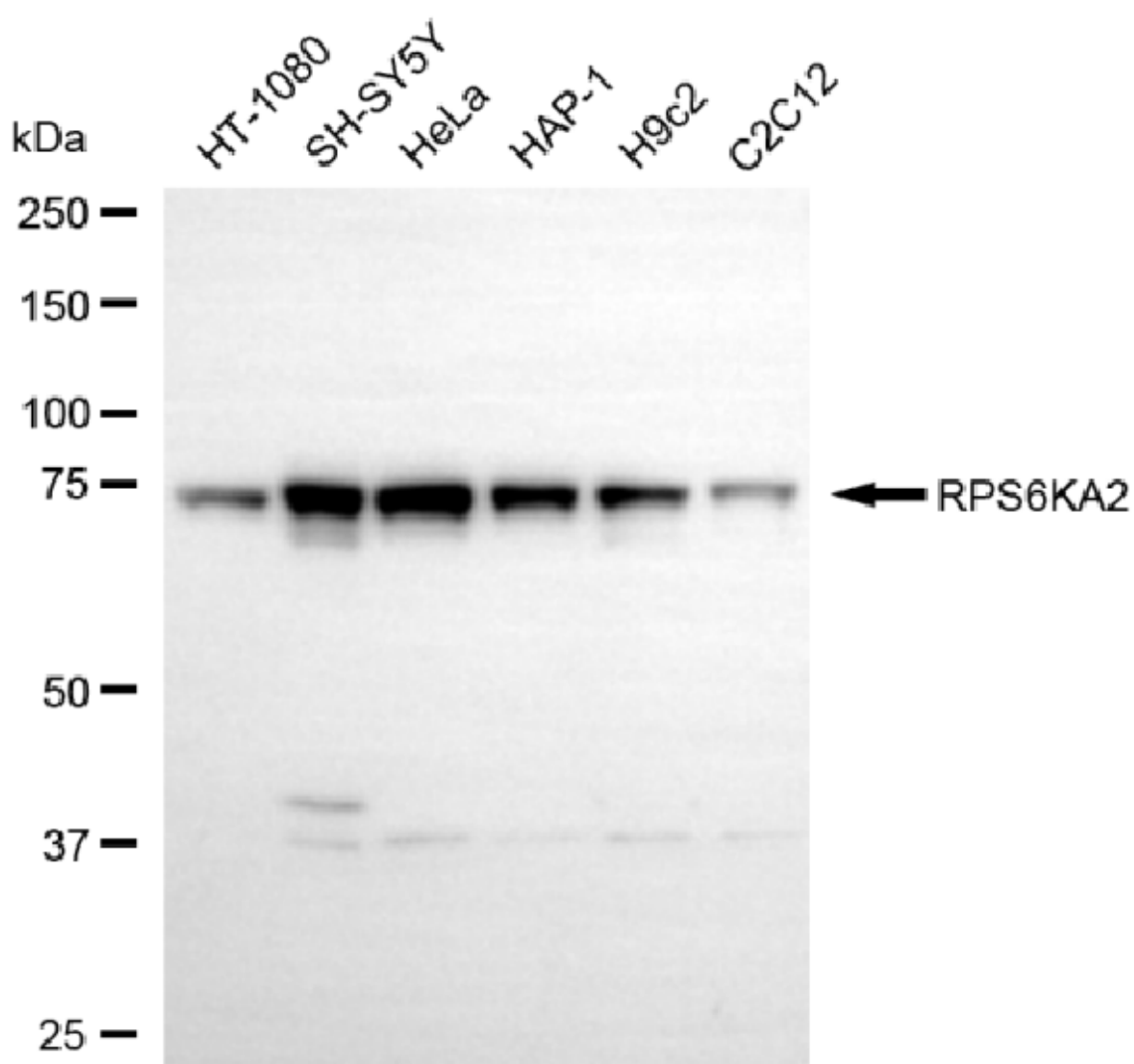
### ORDERS

SALES@GENUINBIOTECH.COM  
FAX: +1-540-855-7041

[WWW.GENUINBIOTECH.COM](http://WWW.GENUINBIOTECH.COM)



Immunocytochemical staining of HeLa cells with anti-RPS6KA2 protein antibody (Cat#5219, 1:1,000) . Nuclei were stained blue with DAPI; RPS6KA2 was stained magenta with Alexa Fluor® 647. Images were taken using Leica stellaris 5. Protein abundance based on laser Intensity and smart gain: Medium. Scale bar, 20  $\mu$ m.



Copyright ©2025 Genuin Biotechnologies LLC

**SUPPORT**

SUPPORT@GENUINBIOTECH.COM  
TEL: +1-540-855-7041

**ORDERS**

SALES@GENUINBIOTECH.COM  
FAX: +1-540-855-7041

[WWW.GENUINBIOTECH.COM](http://WWW.GENUINBIOTECH.COM)

Western blotting analysis using anti-RPS6KA2 antibody (Cat#5219). Total cell lysates (30 µg) from various cell lines were loaded and separated by SDS-PAGE. The blot was incubated with anti-RPS6KA2 antibody (Cat#5219, 1:5,000) and HRP-conjugated goat anti-rabbit secondary antibody (Cat#201, 1:20,000) respectively. Image was developed using NaQ™ ECL Substrate Kit (Cat#716).