

# Anti-IL1RL2 (spesolimab) Monoclonal Antibody



**Catalog #: 52296**

## Aliases

IL1RL2; Interleukin 1 Receptor Like 2; IL1R-Rp2; IL1RRP2; IL-36R; Interleukin-1 Receptor-Related Protein 2; Interleukin-1 Receptor-Like 2; IL-36 Receptor; IL-1Rrp2; IL-1 Receptor-Related Protein 2; EC 3.2.2.6

## Background

Gene Name: IL1RL2

NCBI Gene Entry: [8808](#)

UniProt Entry: [Q9HB29](#)

## Application Information

Molecular Weight: Predicted, 65 kDa

Clonality: monoclonal antibody

Species Reactivity: Human

Applications Tested: Flow cytometry (FCM), Kinetics, Animal Model

## Immunogen

A synthesized peptide derived from human IL1RL2

## Isotype

IgG1

## Storage Buffer

Purified monoclonal antibody supplied in 100mM Pro-Ac, 20mM Arg, pH5.0, without preservative.

## Storage

Store at -20 °C for one year.

**Note:** This product is for research use only.

## Validation Data

---

### SUPPORT

SUPPORT@GENUINBIOTECH.COM  
TEL: +1-540-855-7041

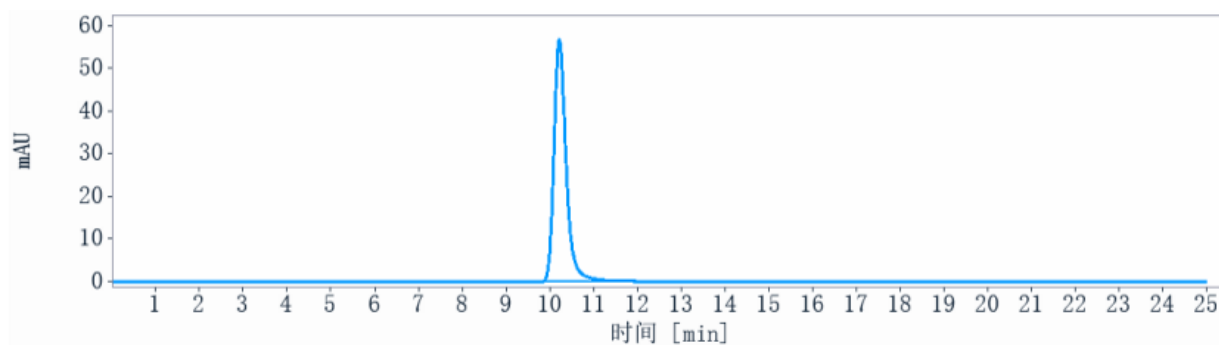
### ORDERS

SALES@GENUINBIOTECH.COM  
FAX: +1-540-855-7041

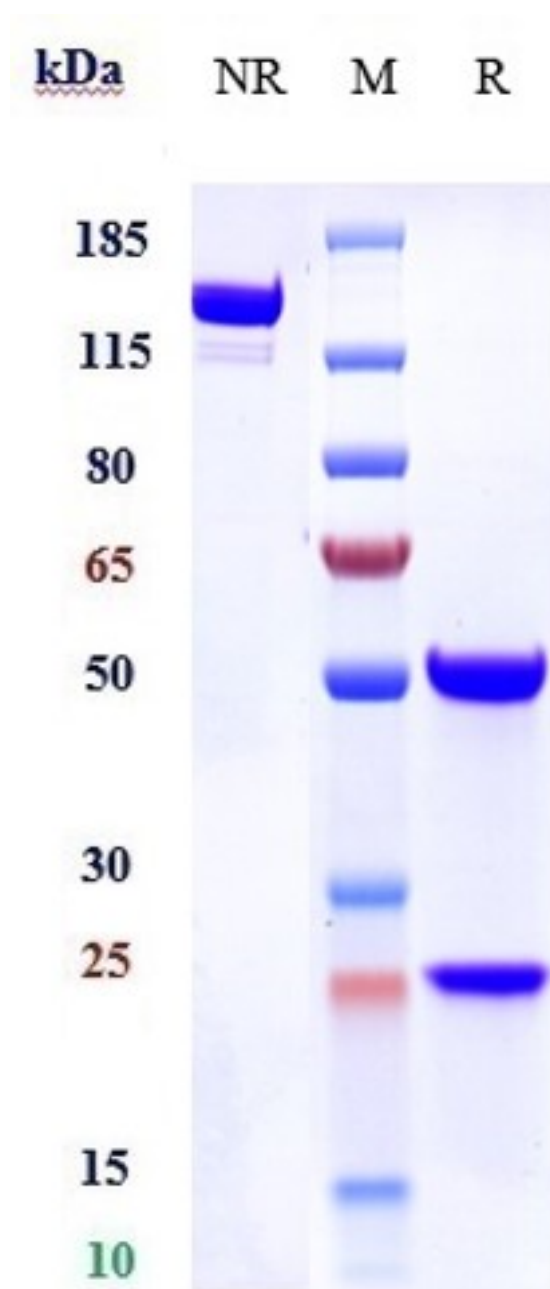
[WWW.GENUINBIOTECH.COM](http://WWW.GENUINBIOTECH.COM)

## Anti-IL1RL2 (spesolimab) Monoclonal Antibody

PAGE 2



The purity of Anti-IL1RL2 (spesolimab) Monoclonal Antibody is more than 95% ,determined by SEC-HPLC.



### SUPPORT

SUPPORT@GENUINBIOTECH.COM  
TEL: +1-540-855-7041

### ORDERS

SALES@GENUINBIOTECH.COM  
FAX: +1-540-855-7041

[WWW.GENUINBIOTECH.COM](http://WWW.GENUINBIOTECH.COM)

## **Anti-IL1RL2 (spesolimab) Monoclonal Antibody**

PAGE 3

Anti-IL1RL2 (spesolimab) Monoclonal Antibody on SDS-PAGE under reducing (R) condition.  
The gel was stained with Coomassie Blue. The purity of the protein is greater than 90%

---

### **SUPPORT**

SUPPORT@GENUINBIOTECH.COM  
TEL: +1-540-855-7041

### **ORDERS**

SALES@GENUINBIOTECH.COM  
FAX: +1-540-855-7041

**[WWW.GENUINBIOTECH.COM](http://WWW.GENUINBIOTECH.COM)**