

Catalog #: 52300

Aliases

MCP-1/CCL2; C-C motif chemokine 2; CCL 2; CCL2; CCL2_HUMAN; Chemokine (C C motif) ligand 2; Chemokine C C motif ligand 2; Chemokine CC Motif Ligand 2; GDCF 2; GDCF 2 HC11; GDCF-2; GDCF2; HC11; HSMCR30; HSMCR30; JE; MCAF; MCP 1; MCP-1; MGC9434; Monocyte chemoattractant protein 1; Monocyte chemotactic and activating factor; Monocyte chemotactic protein 1; Monocyte secretory protein JE; SCYA2; Small inducible cytokine A2 (monocyte chemotactic protein 1, homologous to mouse Sig je); Small inducible cytokine A2; Small inducible cytokine subfamily A (Cys Cys), member 2; Small inducible cytokine subfamily A Cys Cys member 2; Small-inducible cytokine A2; SMC CF; SMC-CF; SMCCF

Background

Gene Name: CCL2

NCBI Gene Entry: [6347](#)

UniProt Entry: [P13500](#)

Application Information

Molecular Weight: Predicted, 11 kDa; observed, 11 kDa

Clonality: Rabbit polyclonal antibody

Species Reactivity: Human, mouse, rat

Applications Tested: Western blotting (WB)

Immunogen

A synthesized peptide derived from human MCP-1

Isotype

Rabbit IgG

Storage Buffer

Supplied in PBS (pH 7.4) containing 50% glycerol, and 0.02% sodium azide.

Storage

Store at -20 °C for one year.

Recommended Dilutions

Western Blotting (WB): 1:500-1:2,000

SUPPORT

SUPPORT@GENUINBIOTECH.COM
TEL: +1-540-855-7041

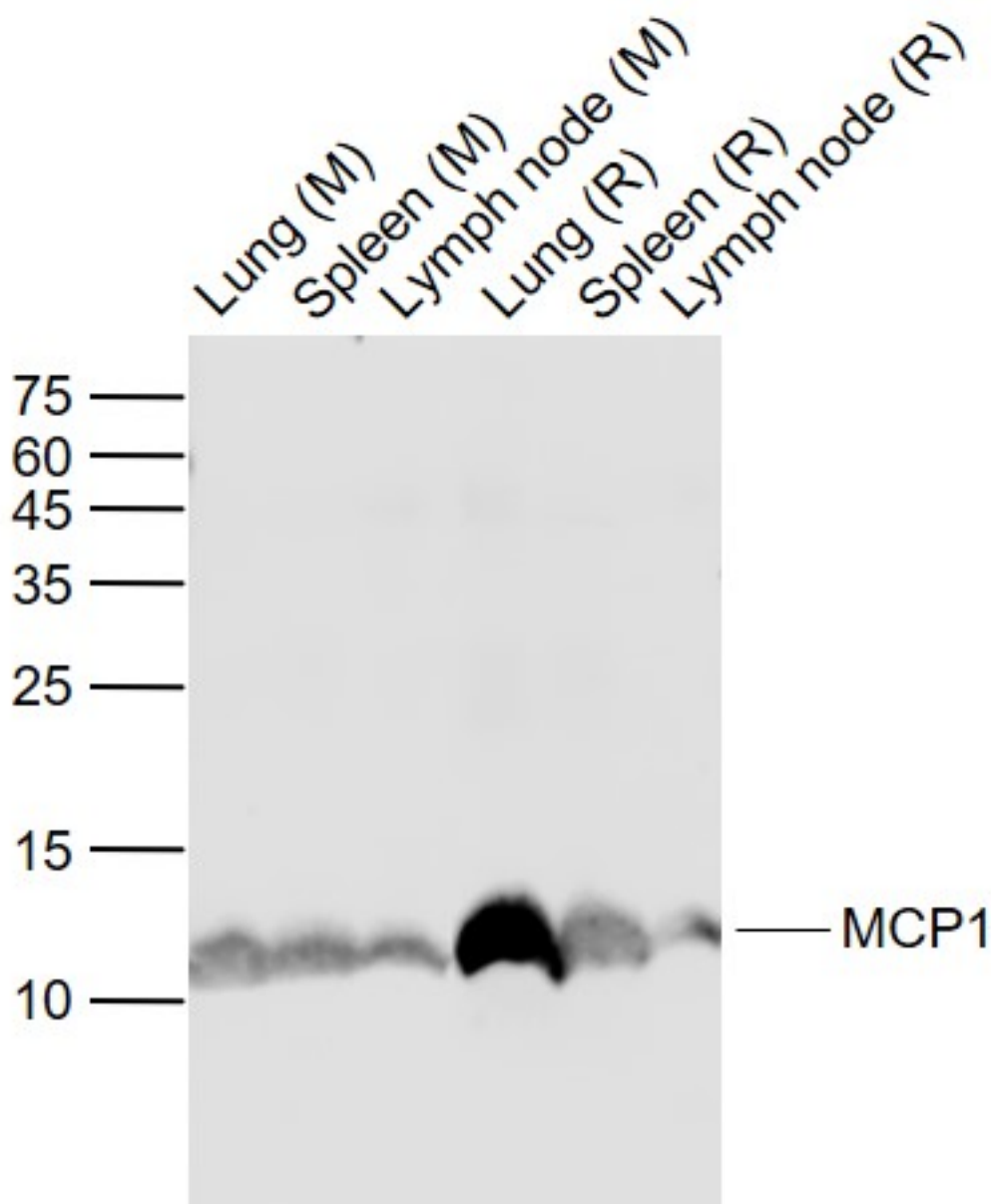
ORDERS

SALES@GENUINBIOTECH.COM
FAX: +1-540-855-7041

WWW.GENUINBIOTECH.COM

Note: This product is for research use only.

Validation Data



Lane 1: Lung (Mouse) Lysate at 40 ug Lane 2: Spleen (Mouse) Lysate at 40 ug Lane 3: Lymph node (Mouse) Lysate at 40 ug Lane 4: Lung (Rat) Lysate at 40 ug Lane 5: Spleen (Rat) Lysate at 40 ug Lane 6: Lymph node (Rat) Lysate at 40 ug Primary: Anti-MCP1 at 1:1,000 dilution Secondary: Goat Anti-Rabbit IgG at 1:20,000 dilution

SUPPORT

SUPPORT@GENUINBIOTECH.COM
TEL: +1-540-855-7041

ORDERS

SALES@GENUINBIOTECH.COM
FAX: +1-540-855-7041

WWW.GENUINBIOTECH.COM