

Catalog #: 52313

Aliases

RBM4B; RNA Binding Motif Protein 4B; ZCCHC21B; ZCCHC15; ZCRB3B; RBM4L; RBM30; RNA-Binding Motif Protein 30; RNA-Binding Protein 4B; MGC10871; Zinc Finger CCHC-Type And RNA Binding Motif 3B; RNA Binding Motif Protein 30; RNA-Binding Motif Protein 4B; RNA-Binding Protein 30

Background

Gene Name: RBM4B

NCBI Gene Entry: [83759](#)

UniProt Entry: [Q9BQ04](#)

Application Information

Molecular Weight: Predicted, 39 kDa; observed, 35 kDa

Clonality: Rabbit polyclonal antibody

Species Reactivity: Human, mouse, rat

Applications Tested: Western blotting (WB)

Immunogen

A synthesized peptide derived from human RBM4B

Isotype

Rabbit IgG

Storage Buffer

Supplied in PBS (pH 7.4) containing 50% glycerol, and 0.02% sodium azide.

Storage

Store at -20 °C for one year.

Recommended Dilutions

Western Blotting (WB): 1:1,000-1:2,500

Note: This product is for research use only.

Validation Data

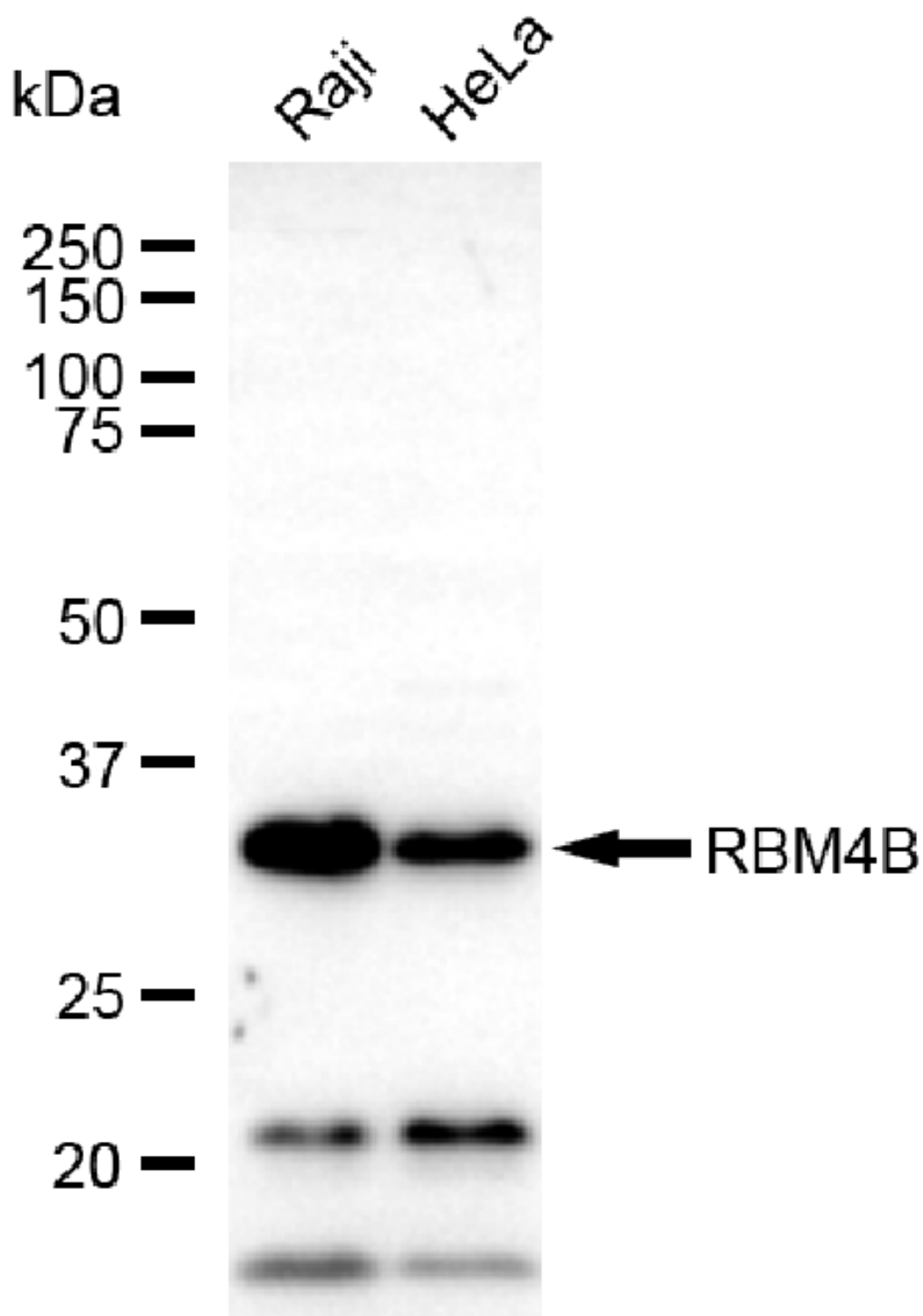
SUPPORT

SUPPORT@GENUINBIOTECH.COM
TEL: +1-540-855-7041

ORDERS

SALES@GENUINBIOTECH.COM
FAX: +1-540-855-7041

WWW.GENUINBIOTECH.COM



Copyright ©2025 Genuin Biotechnologies LLC

Western blotting analysis using anti-RBM4B antibody (Cat#52313). Total lysates (30 µg) were loaded and separated by SDS-PAGE. The blot was incubated with anti-RBM4B antibody (Cat#52313, 1:2,500) and HRP-conjugated goat anti-rabbit secondary antibody (Cat#201, 1:20,000) respectively. Image was developed using FeQ™ ECL Substrate Kit (Cat#226).

SUPPORT

SUPPORT@GENUINBIOTECH.COM
TEL: +1-540-855-7041

ORDERS

SALES@GENUINBIOTECH.COM
FAX: +1-540-855-7041

WWW.GENUINBIOTECH.COM