

## Catalog #: 52316

### Aliases

ERCC5; ERCC Excision Repair 5, Endonuclease; ERCM2; XPGC; Excision Repair Cross-Complementing Rodent Repair Deficiency, Complementation Group 5; Xeroderma Pigmentosum, Complementation Group G; Excision Repair Cross-Complementation Group 5; DNA Repair Protein Complementing XP-G Cells; DNA Excision Repair Protein ERCC-5; XPG; Xeroderma Pigmentosum Group G-Complementing Protein; XPG-Complementing Protein; Cockayne Syndrome; EC 3.1.-.-; ERCC5-201; COFS3; UVDR

### Background

Gene Name: XPG

NCBI Gene Entry: [2073](#)

UniProt Entry: [P28715](#)

### Application Information

Molecular Weight: Predicted, 130 kDa; observed, 130 kDa

Clonality: Rabbit polyclonal antibody

Species Reactivity: Human, mouse

Applications Tested: Western blotting (WB), immunohistochemistry (IHC), immunocytochemistry (IC)

### Immunogen

A synthesized peptide derived from human XPG

### Isotype

Rabbit IgG

### Storage Buffer

Supplied in PBS (pH 7.4) containing 50% glycerol, and 0.02% sodium azide.

### Storage

Store at -20 °C for one year.

### Recommended Dilutions

Western Blotting (WB): 1:500-1:2,000

Immunohistochemistry (IHC): 1:100-1:300

Immunocytochemistry (IC): 1:200-1:1,000

---

#### SUPPORT

SUPPORT@GENUINBIOTECH.COM  
TEL: +1-540-855-7041

#### ORDERS

SALES@GENUINBIOTECH.COM  
FAX: +1-540-855-7041

#### WWW.GENUINBIOTECH.COM

**Note:** This product is for research use only.

## Validation Data

---

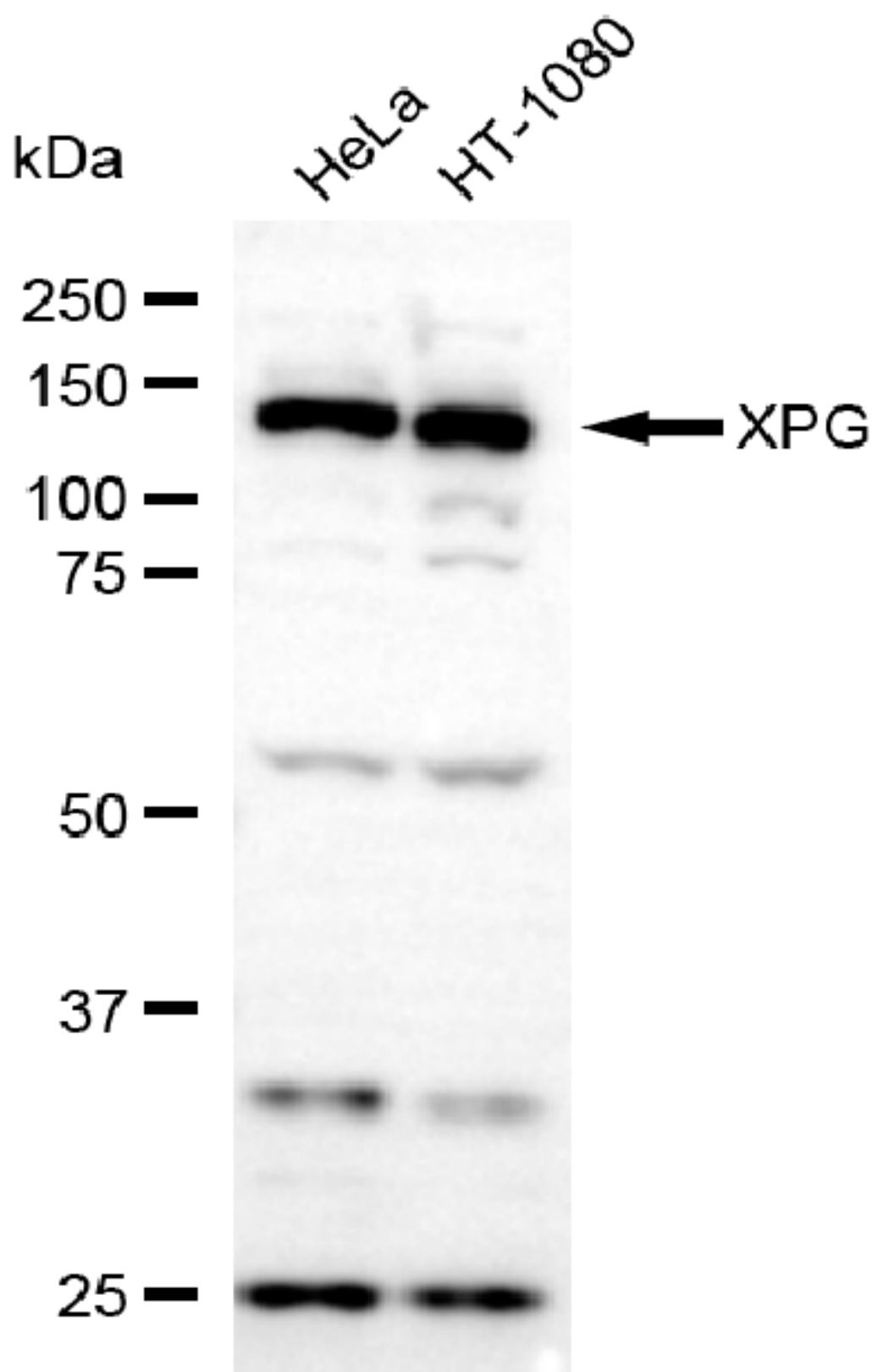
### SUPPORT

SUPPORT@GENUINBIOTECH.COM  
TEL: +1-540-855-7041

### ORDERS

SALES@GENUINBIOTECH.COM  
FAX:+1-540-855-7041

[WWW.GENUINBIOTECH.COM](http://WWW.GENUINBIOTECH.COM)



Copyright ©2025 Genuin Biotechnologies LLC

Western blotting analysis using anti-XPG antibody (Cat#52316). Total lysates (30  $\mu$ g) were loaded and separated by SDS-PAGE. The blot was incubated with anti-XPG antibody (Cat#52316,

**SUPPORT**

SUPPORT@GENUINBIOTECH.COM  
TEL: +1-540-855-7041

**ORDERS**

SALES@GENUINBIOTECH.COM  
FAX: +1-540-855-7041

[WWW.GENUINBIOTECH.COM](http://WWW.GENUINBIOTECH.COM)

1:2,500) and HRP-conjugated goat anti-rabbit secondary antibody (Cat#201, 1:20,000) respectively. Image was developed using FeQ™ ECL Substrate Kit (Cat#226).