

Catalog #: 52319

Aliases

RXRG;NR2B3;Retinoic acid receptor RXR-gamma;Nuclear receptor subfamily 2 group B member 3;Retinoid X receptor gamma

Background

Gene Name: RXRG

NCBI Gene Entry: [6258](#)

UniProt Entry: [P48443](#)

Application Information

Molecular Weight: Predicted, 51 kDa; observed, 50 kDa

Clonality: Rabbit polyclonal antibody

Species Reactivity: Human, mouse

Applications Tested: Western blotting (WB), immunohistochemistry (IHC), immunocytochemistry (IC)

Immunogen

A synthesized peptide derived from human Retinoid X Receptor gamma

Isotype

Rabbit IgG

Storage Buffer

Supplied in PBS (pH 7.4) containing 50% glycerol, and 0.02% sodium azide.

Storage

Store at -20 °C for one year.

Recommended Dilutions

Western Blotting (WB): 1:500-1:2,000

Immunohistochemistry (IHC): 1:100-1:300

Immunocytochemistry (IC): 1:200-1:1,000

Note: This product is for research use only.

Validation Data

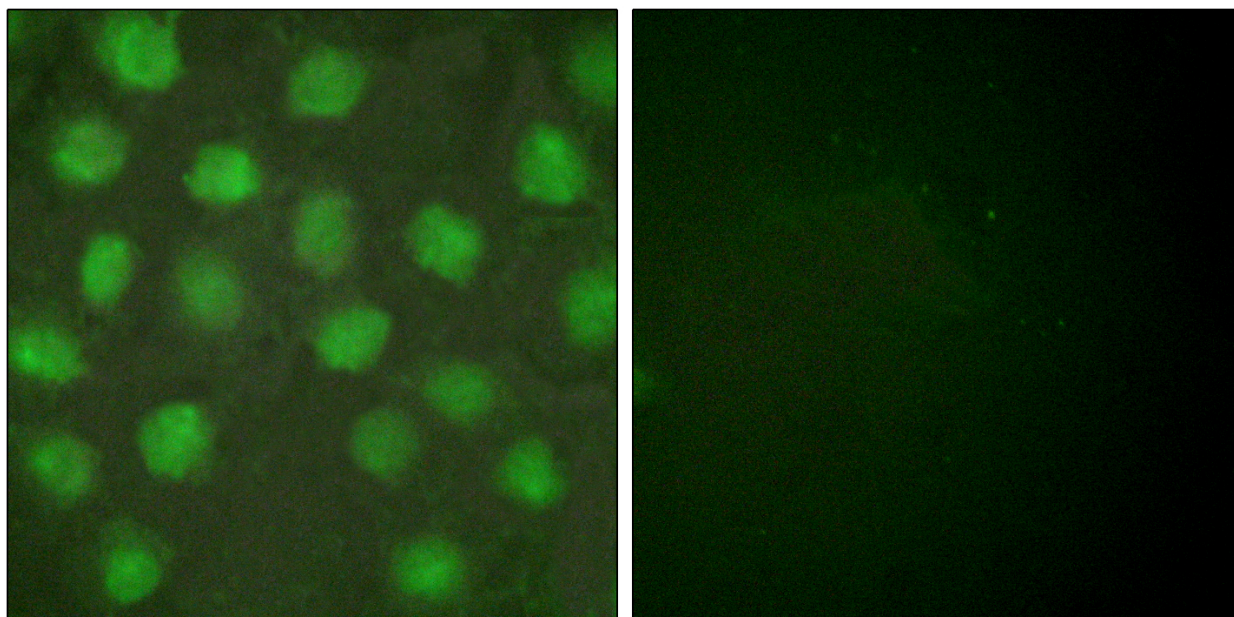
SUPPORT

SUPPORT@GENUINBIOTECH.COM
TEL: +1-540-855-7041

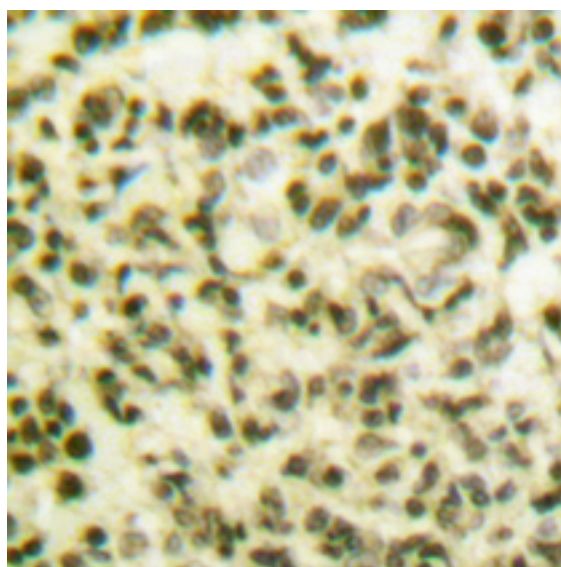
ORDERS

SALES@GENUINBIOTECH.COM
FAX: +1-540-855-7041

WWW.GENUINBIOTECH.COM



Immunofluorescence analysis of HUVEC cells, using RXRGamma Rabbit Antibody. The picture on the right is blocked with the synthesized peptide.



Immunohistochemical analysis of paraffin-embedded Human lung cancer. Antibody was diluted at 1:100(4° overnight).

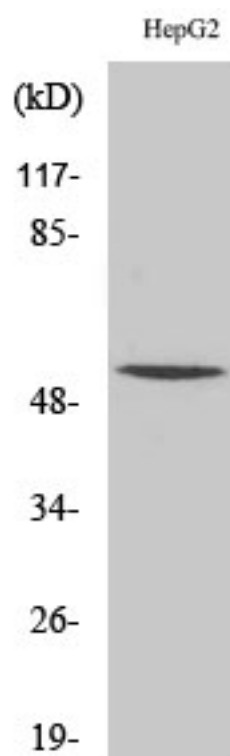
SUPPORT

SUPPORT@GENUINBIOTECH.COM
TEL: +1-540-855-7041

ORDERS

SALES@GENUINBIOTECH.COM
FAX: +1-540-855-7041

WWW.GENUINBIOTECH.COM



Western blotting analysis of HepG2 cells using RXRGamma Rabbit Polyclonal Antibody cells nucleus extracted by Minute TM Cytoplasmic and Nuclear Fractionation kit.