

**Catalog #: 52328**

## Aliases

CEBPB; LAP; TCF5; PP9092; CCAAT/enhancer-binding protein beta; C/EBP beta; Liver activator protein; Nuclear factor NF-IL6; Transcription factor 5; TCF-5

## Background

Gene Name: CEBPB

NCBI Gene Entry: [1051](#)

UniProt Entry: [P17676](#)

## Application Information

Molecular Weight: Predicted, 36 kDa; observed, 36 kDa

Clonality: Rabbit monoclonal antibody

Clone ID: 24GB14160

Species Reactivity: Human, mouse, rat

Applications Tested: Western blotting (WB), immunocytochemistry (IC), immunoprecipitation (IP)

## Immunogen

A synthesized peptide derived from human CEBPB

## Isotype

Rabbit IgG

## Storage Buffer

Supplied in PBS (pH 7.4) containing 50% glycerol, and 0.02% sodium azide.

## Storage

Store at -20 °C for one year.

## Recommended Dilutions

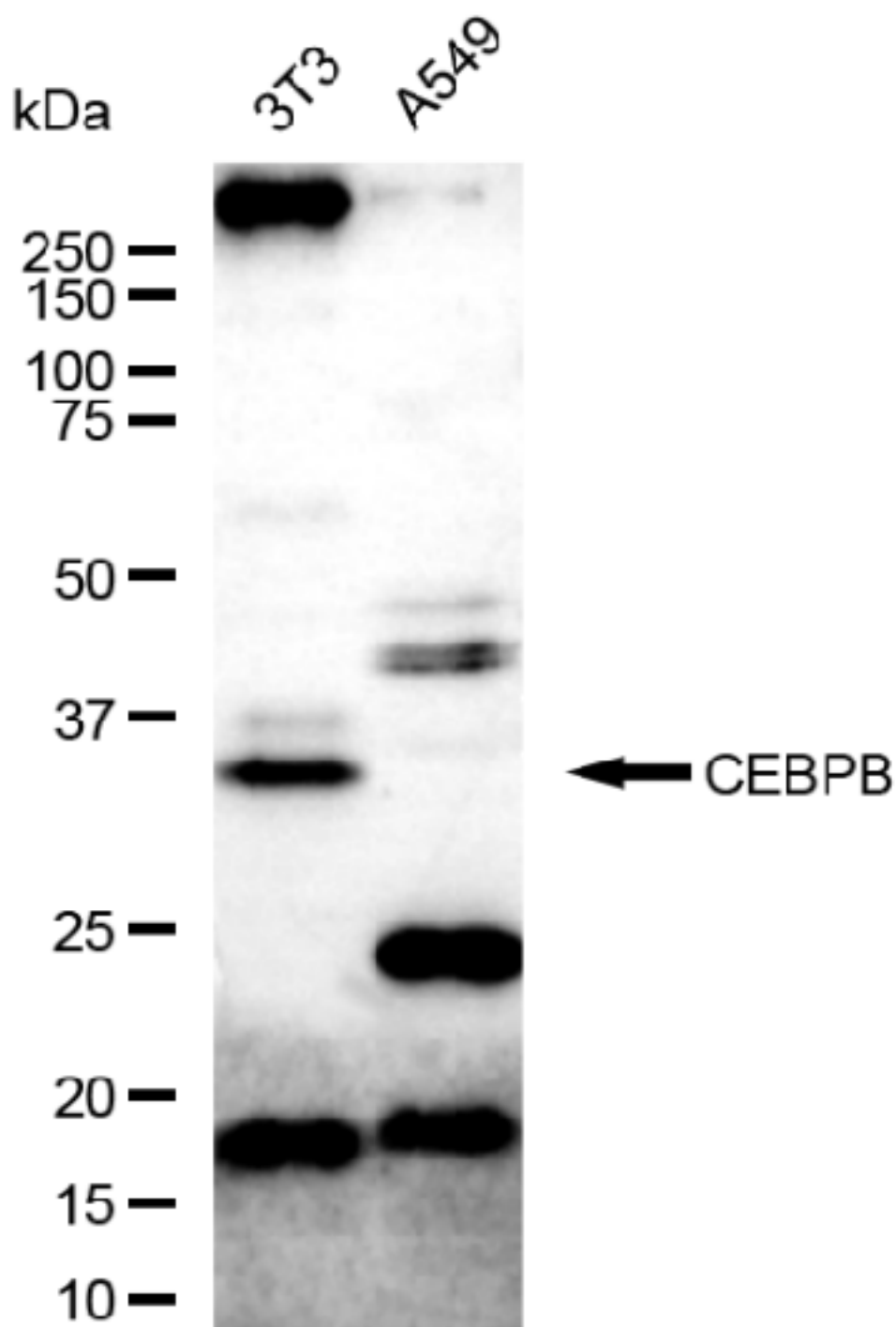
Western Blotting (WB): 1:500-1:1,000

Immunofluorescence (IF): 1:50-1:200

Immunoprecipitation (IP): 1:50

**Note:** This product is for research use only.

## Validation Data



Western blotting analysis using anti-CEBPB antibody (Cat#52328). Total lysates (30  $\mu$ g) were loaded and separated by SDS-PAGE. The blot was incubated with anti-CEBPB antibody (Cat#52328, 1:2,500) and HRP-conjugated goat anti-rabbit secondary antibody (Cat#201, 1:20,000) respectively. Image was developed using FeQ™ ECL Substrate Kit (Cat#226).

## SUPPORT

SUPPORT@GENUINBIOTECH.COM  
TEL: +1-540-855-7041

## ORDERS

SALES@GENUINBIOTECH.COM  
FAX: +1-540-855-7041

WWW.GENUINBIOTECH.COM