

Catalog #: 52334

Aliases

NOD1; Nucleotide Binding Oligomerization Domain Containing 1; CLR7.1; NLRC1; CARD4; Nucleotide-Binding Oligomerization Domain, Leucine Rich Repeat And CARD Domain Containing 1; Nucleotide-Binding Oligomerization Domain-Containing Protein 1; Caspase Recruitment Domain-Containing Protein 4; Caspase Recruitment Domain Family, Member 4; NLR Family, CARD Domain Containing 1; HNod1

Background

Gene Name: NOD1

NCBI Gene Entry: [10392](#)

UniProt Entry: [Q9Y239](#)

Application Information

Molecular Weight: Predicted, 108 kDa; observed, 105 kDa

Clonality: Rabbit polyclonal antibody

Species Reactivity: Human, mouse

Applications Tested: Western blotting (WB)

Immunogen

A synthesized peptide derived from human NOD1

Isotype

Rabbit IgG

Storage Buffer

Supplied in PBS containing 50% glycerol, 0.5% BSA and 0.02% sodium azide.

Storage

Store at -20 °C for one year.

Recommended Dilutions

Western Blotting (WB): 1:500-1:2,000

Note: This product is for research use only.

Validation Data

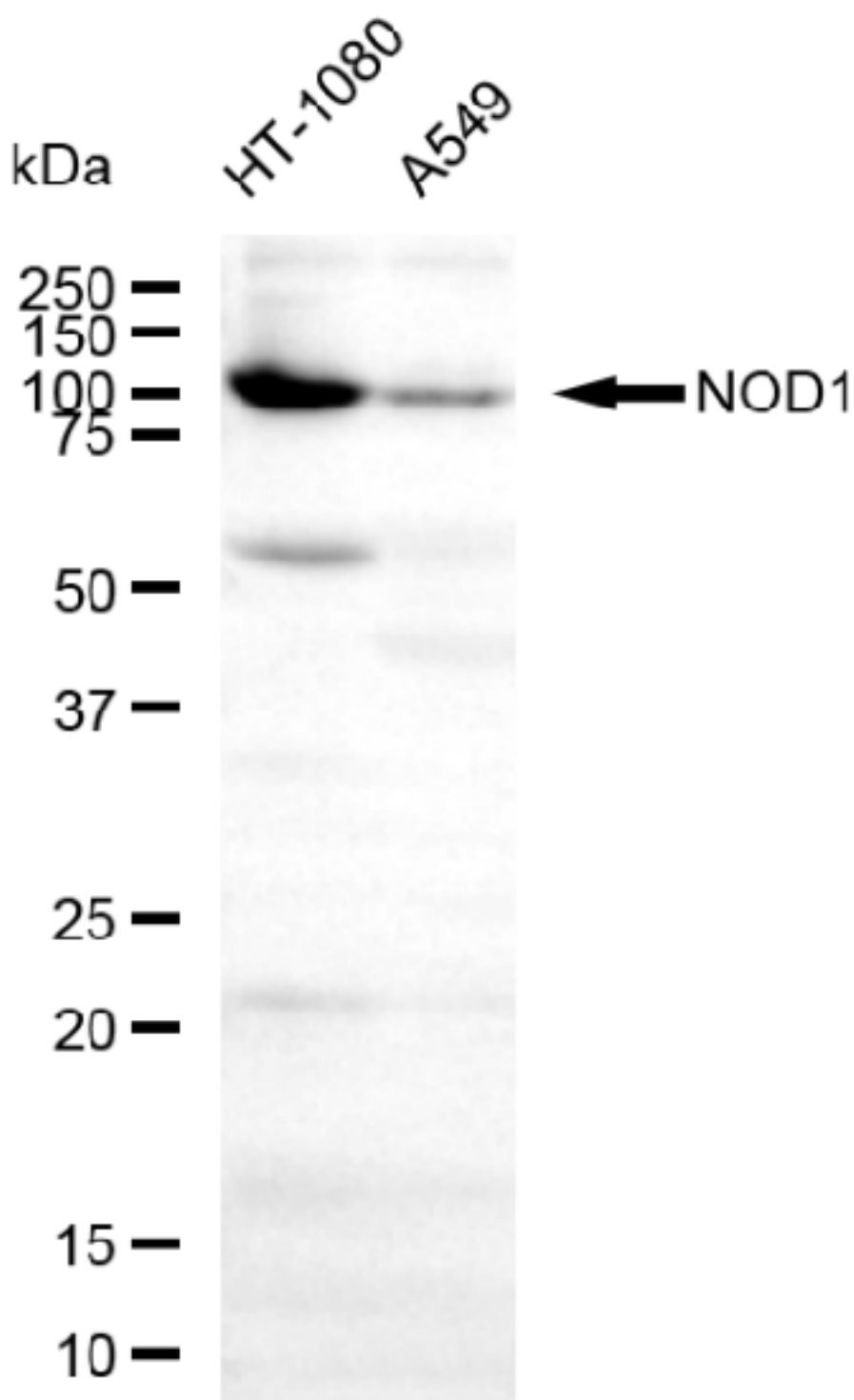
SUPPORT

SUPPORT@GENUINBIOTECH.COM
TEL: +1-540-855-7041

ORDERS

SALES@GENUINBIOTECH.COM
FAX: +1-540-855-7041

WWW.GENUINBIOTECH.COM



Copyright ©2025 Genuin Biotechnologies LLC

Western blotting analysis using anti-NOD1 antibody (Cat#52334). Total lysates (30 μ g) were loaded and separated by SDS-PAGE. The blot was incubated with anti-NOD1 antibody (Cat#52334, 1:2,500) and HRP-conjugated goat anti-rabbit secondary antibody (Cat#201, 1:20,000) respectively. Image was developed using FeQ™ ECL Substrate Kit (Cat#226).

SUPPORT

SUPPORT@GENUINBIOTECH.COM
TEL: +1-540-855-7041

ORDERS

SALES@GENUINBIOTECH.COM
FAX: +1-540-855-7041

WWW.GENUINBIOTECH.COM