

Catalog #: 52337

Aliases

IDO1; Indoleamine 2,3-Dioxygenase 1; INDO; IDO; Indoleamine-Pyrrole 2,3-Dioxygenase; IDO-1; Indoleamine-Pyrrole 2,3 Dioxygenase; Indolamine 2,3 Dioxygenase; Indole 2,3-Dioxygenase; EC 1.13.11.52

Background

Gene Name: IDO1

NCBI Gene Entry: [3620](#)

UniProt Entry: [P14902](#)

Application Information

Molecular Weight: Predicted, 45 kDa; observed, 44 kDa

Clonality: Rabbit polyclonal antibody

Species Reactivity: Human, mouse, rat

Applications Tested: Western blotting (WB)

Immunogen

A synthesized peptide derived from human IDO1

Isotype

Rabbit IgG

Storage Buffer

Supplied in PBS (pH 7.4) containing 50% glycerol, and 0.02% sodium azide.

Storage

Store at -20 °C for one year.

Recommended Dilutions

Western Blotting (WB): 1:500-1:2,000

Note: This product is for research use only.

Validation Data

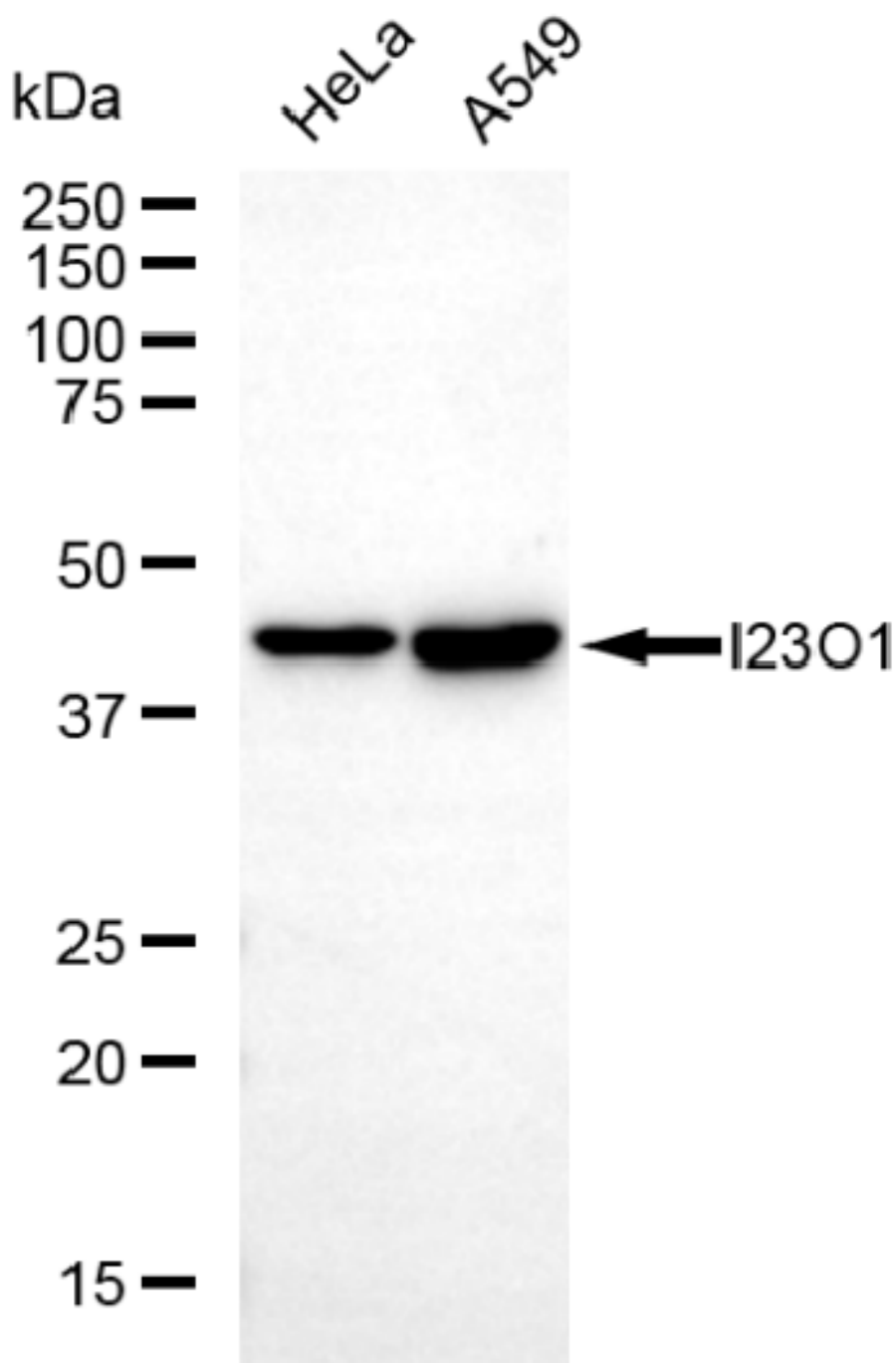
SUPPORT

SUPPORT@GENUINBIOTECH.COM
TEL: +1-540-855-7041

ORDERS

SALES@GENUINBIOTECH.COM
FAX: +1-540-855-7041

WWW.GENUINBIOTECH.COM



Copyright ©2025 Genuin Biotechnologies LLC

Western blotting analysis using anti-IDO1 antibody (Cat#52337). Total lysates (30 µg) were loaded and separated by SDS-PAGE. The blot was incubated with anti-IDO1 antibody (Cat#52337, 1:2,500) and HRP-conjugated goat anti-rabbit secondary antibody (Cat#201, 1:20,000) respectively. Image was developed using FeQ™ ECL Substrate Kit (Cat#226).

SUPPORT

SUPPORT@GENUINBIOTECH.COM
TEL: +1-540-855-7041

ORDERS

SALES@GENUINBIOTECH.COM
FAX: +1-540-855-7041

WWW.GENUINBIOTECH.COM