

Anti-Angiotensinogen Rabbit Monoclonal Antibody



Catalog #: 5234

Aliases

AGT; Angiotensinogen; SERPINA8; Serpin Peptidase Inhibitor, Clade A, Member 8; Alpha-1 Antiproteinase, Antitrypsin; Serpin A8; Serine (Or Cysteine) Proteinase Inhibitor; Fetal-Liver Predominant Transporter 1; Pre-Angiotensinogen; Angiotensin II; Angiotensin I; HFLT1; ANHU

Background

Gene Name: AGT

NCBI Gene Entry: [183](#)

UniProt Entry: [P01019](#)

Application Information

Molecular Weight: Predicted, 52 kDa; observed, 48 kDa

Clonality: Rabbit monoclonal antibody

Clone ID: 25GB280

Species Reactivity: Human, mouse, rat

Applications Tested: Western blotting (WB), flow cytometry (FCM)

Immunogen

A synthesized peptide derived from human Angiotensinogen

Isotype

Rabbit IgG

Storage Buffer

Supplied in PBS (pH 7.4) containing 50% glycerol, and 0.02% sodium azide.

Storage

Store at -20 °C for one year.

Recommended Dilutions

Western Blotting (WB): 1:1,000-1:5,000

Flow Cytometry (FCM): 1:2,000

Note: This product is for research use only.

Validation Data

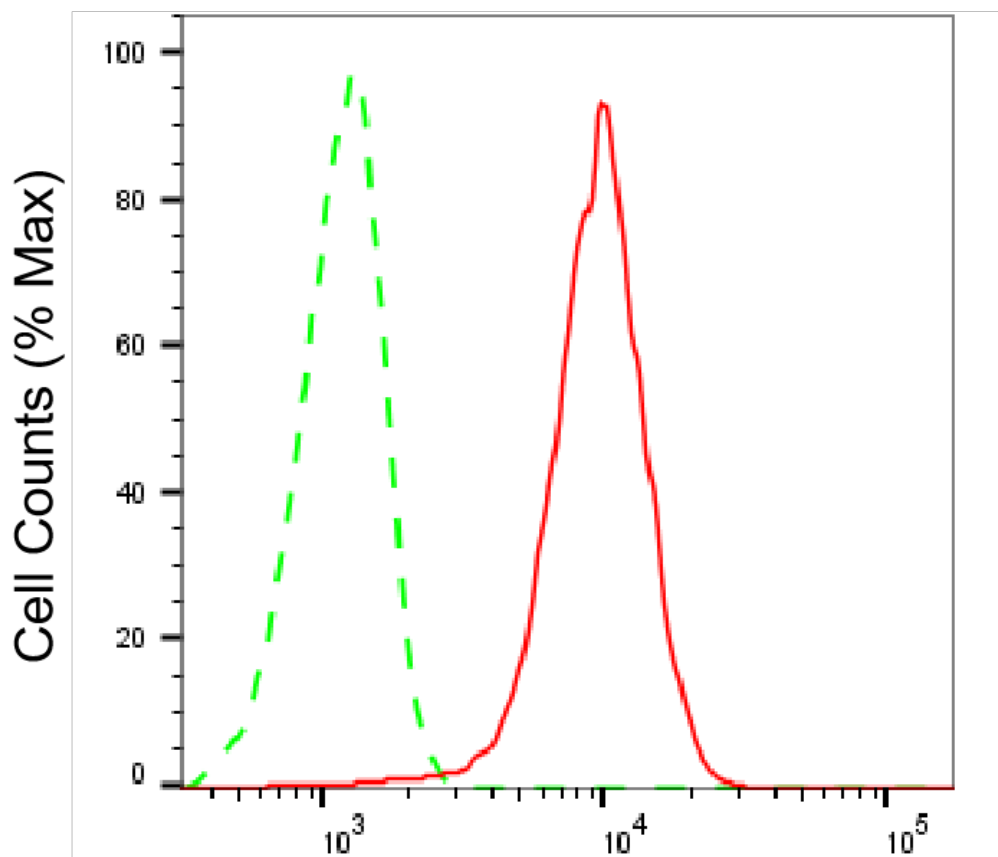
SUPPORT

SUPPORT@GENUINBIOTECH.COM
TEL: +1-540-855-7041

ORDERS

SALES@GENUINBIOTECH.COM
FAX: +1-540-855-7041

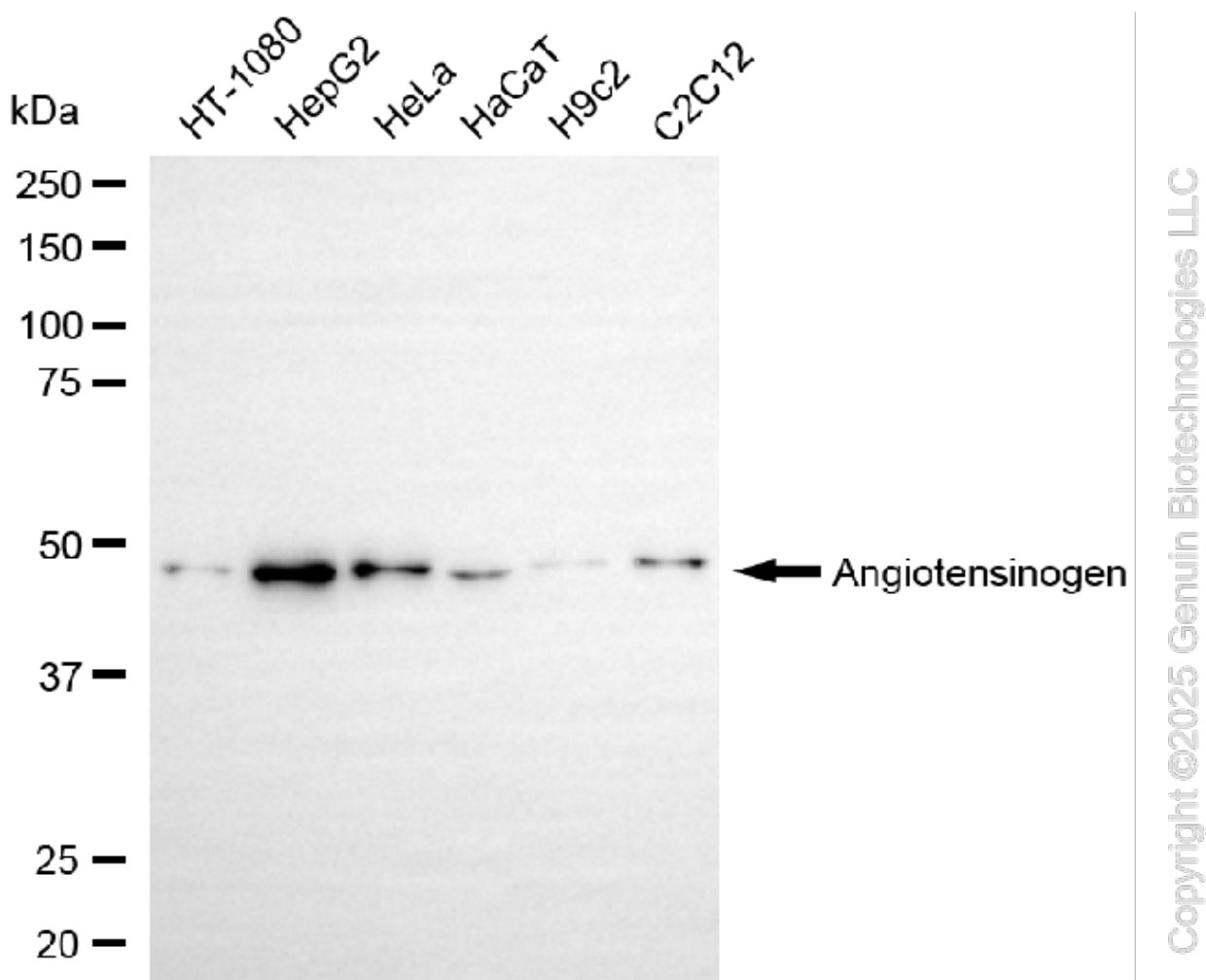
WWW.GENUINBIOTECH.COM



Copyright ©2025 Genuin Biotechnologies LLC

Angiotensinogen-Alexa Fluor® 647

Flow cytometric analysis of Angiotensinogen expression in HepG2 cells using anti-Angiotensinogen antibody (Cat#5234, 1:2,000). Green, isotype control; red, Angiotensinogen.



Western blotting analysis using anti-angiotensinogen antibody (Cat#5234). Total cell lysates (30 μ g) from various cell lines were loaded and separated by SDS-PAGE. The blot was incubated with anti-angiotensinogen antibody (Cat#5234, 1:5,000) and HRP-conjugated goat anti-rabbit secondary antibody (Cat#201, 1:20,000) respectively. Image was developed using FeQ™ ECL Substrate Kit (Cat#226).